



MLS 6679525 Lake Land

\$170,000

Description:

EAST SPIRIT LAKE - 337' lake frontage and good hard bottom swimming! This gorgeous large lot is over 1.3 acre and has beautiful mature trees. The lot is rolling and has a large level area next to the elevation to the water. Covenants apply but they allow travel trailers. Come and take a look!

Additional Details:

Lot Acres	1.33
Lot Dimensions	337x204 IRREGULAR
School District	549
Taxes	\$1,378
Taxes with Assessments	\$1,620
Tax Year	2025

Additional Features:

Driving Directions:

From Vergas, 3.2 miles west on Co Hwy 4. Turn left, south onto CR-41 for 0.7 miles. Turn right onto Wrigley Circle for 0.3 miles. Turn left onto Wrigley Ln for 0.7 miles to property on your left.



Listed By:
Coldwell Banker Preferred Partners

Affinity Real Estate Inc. participates in the Regional Multiple Listing Service of Minnesota, Inc Broker Reciprocity (sm) program, allowing us to display other broker's listings on our website. All properties are subject to prior sale, change or withdrawal.



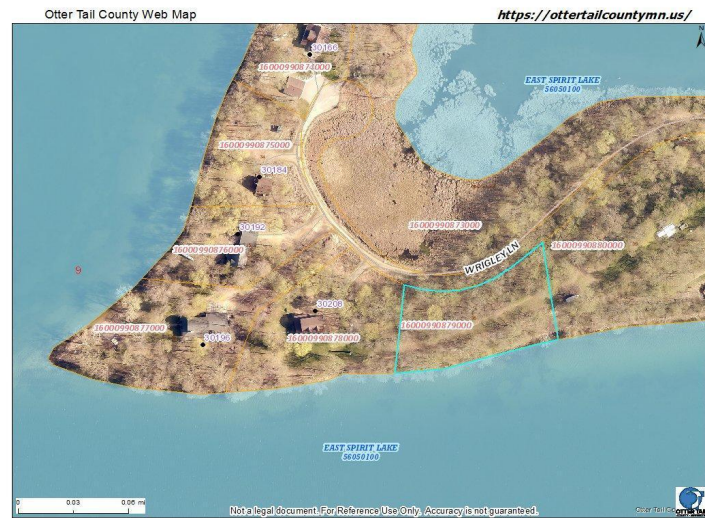
Call Affinity Real Estate

218-237-3333

info@affinityrealestate.com



Affinity Real Estate - 600 Park Avenue South - Park Rapids MN 56470



website: www.AffinityRealEstate.com | email: info@affinityrealestate.com | office: 218-237-3333 | fax: 218-237-3377



\$170,000
 MLS 6679525 Lake Land
 LOT 38, B1 WRIGLEY LN.
 Vergas MN 56587



website: www.AffinityRealEstate.com | email: info@affinityrealestate.com | office: 218-237-3333 | fax: 218-237-3377



\$170,000
 MLS 6679525 Lake Land
 LOT 38, B1 WRIGLEY LN.
 Vergas MN 56587



website: www.AffinityRealEstate.com | email: info@affinityrealestate.com | office: 218-237-3333 | fax: 218-237-3377



\$170,000
 MLS 6679525 Lake Land
 LOT 38, B1 WRIGLEY LN.
 Vergas MN 56587