



MLS 6679619 Lake Land

\$19,900

Description:

A lake front property is awaiting your touches to make it your own. Build/rv/tent or whatever you want to do with this amazing piece of land. Year around entertainment from lakes/shopping/trails and much more.

Additional Details:

Lot Acres	1.25
Lot Dimensions	irr
School District	482
Taxes	\$30
Taxes with Assessments	\$30
Tax Year	2024

Additional Features:

Driving Directions:

From Randall take County Rd 1 towards Pillager to left on Lake Camile Dr to right on Black Forest Pass to left on Cardinal Trl to property on the right.



Listed By:
Edina Realty, Inc.

Affinity Real Estate Inc. participates in the Regional Multiple Listing Service of Minnesota, Inc Broker Reciprocity (sm) program, allowing us to display other broker's listings on our website. All properties are subject to prior sale, change or withdrawal.



Call Affinity Real Estate

218-237-3333

info@affinityrealestate.com



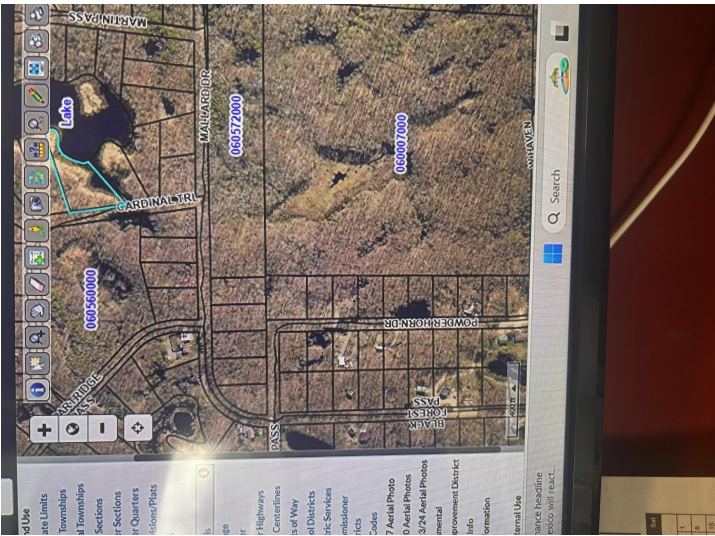
Affinity Real Estate - 600 Park Avenue South - Park Rapids MN 56470



website: www.AffinityRealEstate.com | email: info@affinityrealestate.com | office: 218-237-3333 | fax: 218-237-3377



\$19,900
 MLS 6679619 Lake Land
 xxx Cardinal Trail
 Randall MN 56475



website: www.AffinityRealEstate.com | email: info@affinityrealestate.com | office: 218-237-3333 | fax:218-237-3377



\$19,900
 MLS 6679619 Lake Land
 xxx Cardinal Trail
 Randall MN 56475