

MLS 6680451 Land

**\$59,900**

2.54 Acres  
Finished Lot(s)

X22 TBD My Abbeys Way Lane  
Pequot Lakes MN 56472

Status: Active

#### Description:

New residential neighborhood in the heart of the Nisswa and Pequot Lakes area. Nicely wooded 2.25+ acre lots are designed to offer peace and privacy in a rural setting and a great location for your new home. New streets, without through traffic are nearing completion and will be paved this Spring by developer. CW Power and TDS cable, phone and high speed internet are available at street. This offering is Phase 1 of RJ Estates with 30 platted parcels, other parcels in this plat may be available at this time. Close to Gull Lake, Pillsbury State forest, Pelican lake, championship golf and all the lakes area has to offer. See covenants and plat in supplements.

#### Additional Details:

Lot Acres	2.54
Lot Dimensions	382x289x381x290
School District	186
Taxes	\$58
Taxes with Assessments	\$58
Tax Year	2024

#### Additional Features:

#### Driving Directions:

From Nisswa, North on Hwy 371 to Left on Co Rd 29 (Wilderness Rd) to Right on Co Rd 78 (17th Ave) to Right on 72nd St SW, to Left on Abby's Lane SW to Left on Smiley Way to cul-de-sac.



Listed By:  
Kurilla Real Estate LTD

Affinity Real Estate Inc. participates in the Regional Multiple Listing Service of Minnesota, Inc Broker Reciprocity (sm) program, allowing us to display other broker's listings on our website. All properties are subject to prior sale, change or withdrawal.



Call Affinity Real Estate

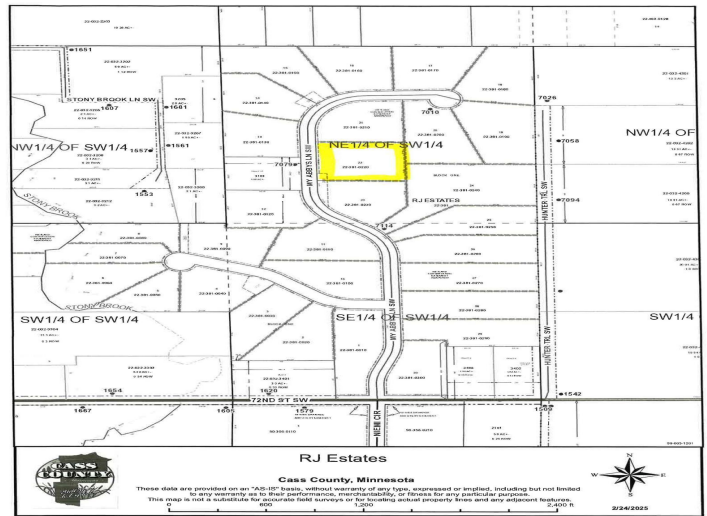
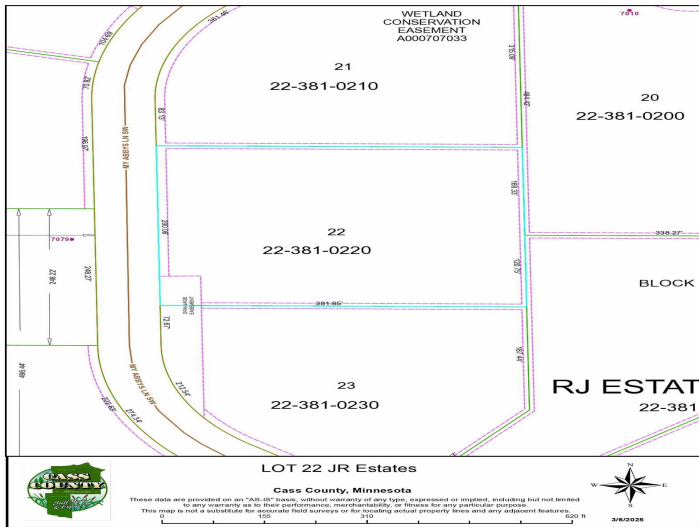
**218-237-3333**

[info@affinityrealestate.com](mailto:info@affinityrealestate.com)



Affinity Real Estate - 600 Park Avenue South - Park Rapids MN 56470





website: [www.AffinityRealEstate.com](http://www.AffinityRealEstate.com) | email: [info@affinityrealestate.com](mailto:info@affinityrealestate.com) | office: 218-237-3333 | fax: 218-237-3377

**Affinity**  
REAL ESTATE INC

**\$59,900**  
MLS 6680451 Land  
X22 TBD My Abbeys Way  
Lane  
Pequot Lakes MN 56472



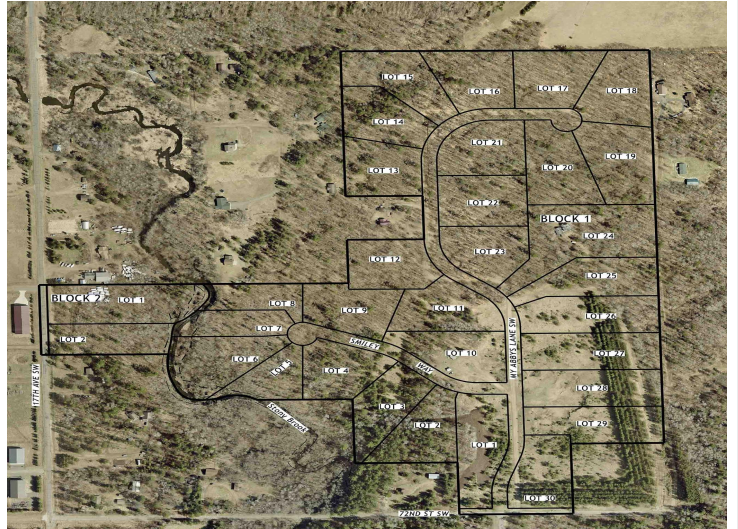
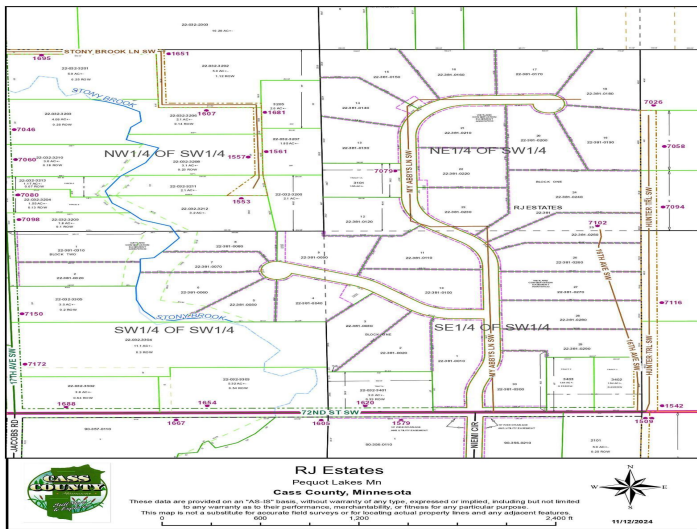
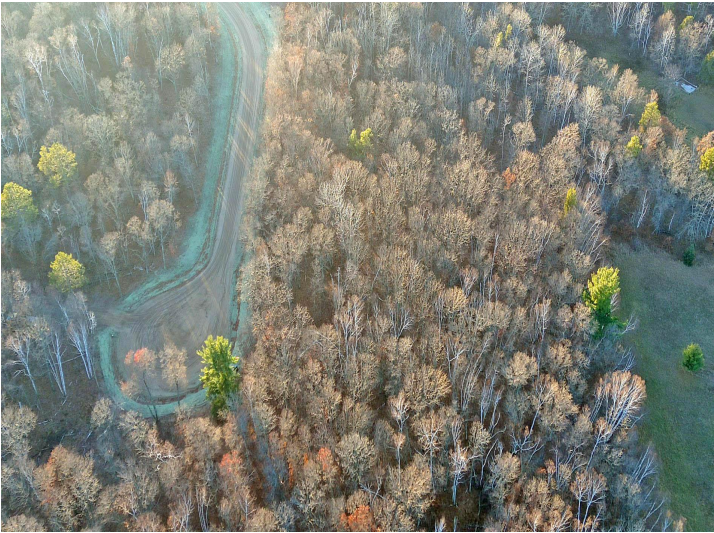


website: [www.AffinityRealEstate.com](http://www.AffinityRealEstate.com) | email: [info@affinityrealestate.com](mailto:info@affinityrealestate.com) | office: 218-237-3333 | fax: 218-237-3377



**\$59,900**  
 MLS 6680451 Land  
 X22 TBD My Abbeys Way  
 Lane  
 Pequot Lakes MN 56472





website: [www.AffinityRealEstate.com](http://www.AffinityRealEstate.com) | email: [info@affinityrealestate.com](mailto:info@affinityrealestate.com) | office: 218-237-3333 | fax: 218-237-3377



**\$59,900**  
 MLS 6680451 Land  
 X22 TBD My Abbeys Way  
 Lane  
 Pequot Lakes MN 56472