



MLS 6680570 Residential

**\$334,900**

1,344 sq ft  
3 bedrooms  
2 baths

550 Emory Circle  
Motley MN 56466

Status: Active

**Description:**

Tucked away at the end of a cul-de-sac, this nearly new 3-bed, 2-bath home is set on a spacious 2.8-acre lot, offering both privacy and a generous outdoor space to enjoy. The large, level front yard is perfect for recreation, while the convenient pull-around driveway provides ease of access.

Step inside to discover a thoughtfully designed layout that welcomes you with an open-concept living space—ideal for both everyday living and entertaining. The kitchen is a standout, featuring ample counter space, beautiful alder custom cabinets, and soft-close drawers, all designed for both style and functionality. The seamless flow between the kitchen, dining, and living areas creates a warm and inviting atmosphere.


The primary suite serves as a private retreat, complete with an ensuite bathroom for added comfort. White six-panel doors throughout the home add a classic touch, while generously sized bedrooms provide plenty of storage. A front foyer/mudroom enhances daily convenience, keeping clutter at bay.

Designed with storage in mind, the home boasts an expansive three-stall garage (28x36), offering plenty of room for vehicles, a workbench, shelving, or recreational gear. Sliding glass doors off the main living space open to a sprawling backyard, perfect for relaxing or entertaining.

Located near dining, healthcare, and Motley/Staples/Pillager schools, this home offers the perfect combination of accessibility and tranquility. Don't miss the chance to make it yours—schedule a showing today!

**Additional Details:**

Year Built	2023
Lot Acres	2.8
Lot Dimensions	346x466x222x403
Garage Stalls	3
School District	116
Taxes	\$474
Taxes with Assessments	\$474

1  Listed By: 2024  
Coldwell Banker Realty

**Additional Features:**

Affinity Real Estate Inc. participates in the Regional Multiple Listing Service of Minnesota, Inc. Broker Reciprocity (RM) program, allowing us to display other broker's listings on our website. All properties are subject to prior sale, change or withdrawal.

**Driving Directions:**



**Call Affinity Real Estate**

**218-237-3333**

**info@affinityrealestate.com**

Sewer:  Compliant - Yes, Tank with Drainage Field Water: 



**Affinity Real Estate - 600 Park Avenue South - Park Rapids MN 56470**

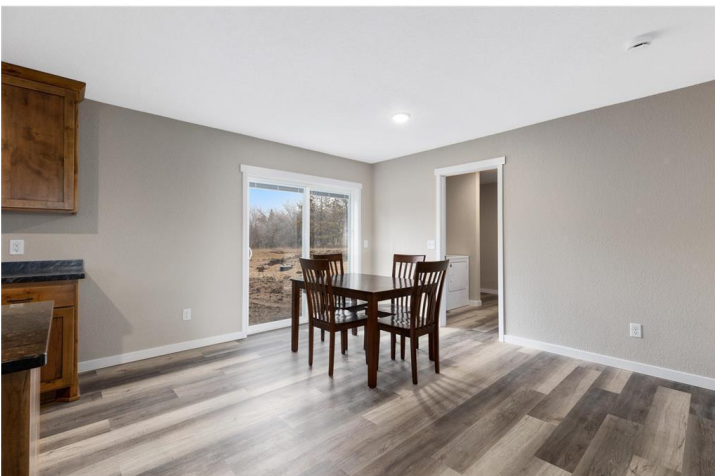


website: [www.AffinityRealEstate.com](http://www.AffinityRealEstate.com) | email: [info@affinityrealestate.com](mailto:info@affinityrealestate.com) | office: 218-237-3333 | fax: 218-237-3377



**\$334,900**  
MLS 6680570 Residential  
550 Emory Circle  
Motley MN 56466

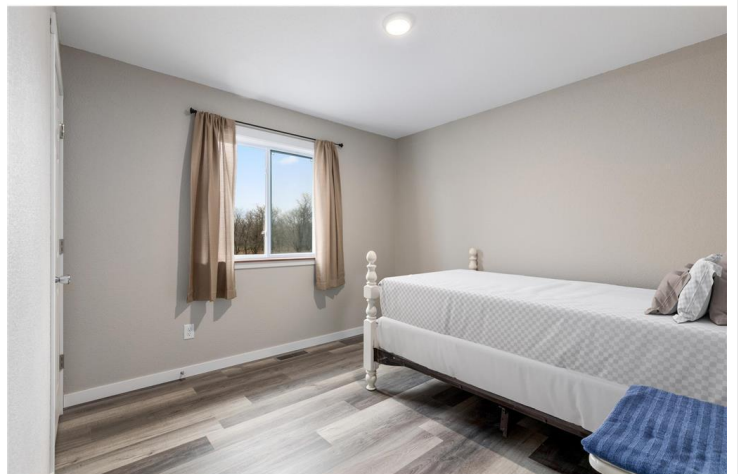




website: [www.AffinityRealEstate.com](http://www.AffinityRealEstate.com) | email: [info@affinityrealestate.com](mailto:info@affinityrealestate.com) | office: 218-237-3333 | fax: 218-237-3377



**\$334,900**  
 MLS 6680570 Residential  
 550 Emory Circle  
 Motley MN 56466



website: [www.AffinityRealEstate.com](http://www.AffinityRealEstate.com) | email: [info@affinityrealestate.com](mailto:info@affinityrealestate.com) | office: 218-237-3333 | fax: 218-237-3377



**\$334,900**  
MLS 6680570 Residential  
550 Emory Circle  
Motley MN 56466





website: [www.AffinityRealEstate.com](http://www.AffinityRealEstate.com) | email: [info@affinityrealestate.com](mailto:info@affinityrealestate.com) | office: 218-237-3333 | fax: 218-237-3377



**\$334,900**  
MLS 6680570 Residential  
550 Emory Circle  
Motley MN 56466