



MLS 6680633 Lake Home

\$449,900

1,600 sq ft
2 bedrooms
2 baths

500 Irving Beach Drive
Bemidji MN 56601

Waterfront: Irving

Status: Pending

Description:

Very nice 2 bedroom, 2 full bath (plus office) townhome in the coveted Irvingboro neighborhood. Let the sunshine in with the huge windows, and amazing sunset views. Full unfinished basement. Steel Siding. Double attached garage. A private marina slip is available for your boating enjoyment (Lake Bemidji Chain) A private marina, private picnic shelter, walking trails, parks, bonfire pits, are all part of the serene lakeside living that is within walking distance of town. This is a rare opportunity to be part of this neighborhood with all that it has to offer.

Additional Details:

Year Built	1998
Lot Acres	0.08
Lot Dimensions	50 x 70
Garage Stalls	2
School District	31
Taxes	\$4,210
Taxes with Assessments	\$4,210
Tax Year	2023

Additional Features:

Fuel: Natural Gas **Heat:** Forced Air

Driving Directions:

From Paul Bunyan Dr SW and Shevlin Ave SW (Keiths Pizza S Corner) turn onto Shevlin Ave SW, turn right onto Clausen Ave SW then turn right on Shortcut Ln Sw then turn left into the driveway just before Irving Beach Dr SW



Listed By:
Better Homes and Gardens Real Estate First Cho

Affinity Real Estate Inc. participates in the Regional Multiple Listing Service of Minnesota, Inc Broker Reciprocity (sm) program, allowing us to display other broker's listings on our website. All properties are subject to prior sale, change or withdrawal.



Call Affinity Real Estate

218-237-3333

info@affinityrealestate.com



Affinity Real Estate - 600 Park Avenue South - Park Rapids MN 56470



website: www.AffinityRealEstate.com | email: info@affinityrealestate.com | office: 218-237-3333 | fax:218-237-3377

Affinity
REAL ESTATE INC

\$449,900
MLS 6680633 Lake Home
500 Irving Beach Drive
Bemidji MN 56601



website: www.AffinityRealEstate.com | email: info@affinityrealestate.com | office: 218-237-3333 | fax:218-237-3377

Affinity
REAL ESTATE INC

\$449,900
MLS 6680633 Lake Home
500 Irving Beach Drive
Bemidji MN 56601



website: www.AffinityRealEstate.com | email: info@affinityrealestate.com | office: 218-237-3333 | fax:218-237-3377

Affinity
REAL ESTATE INC

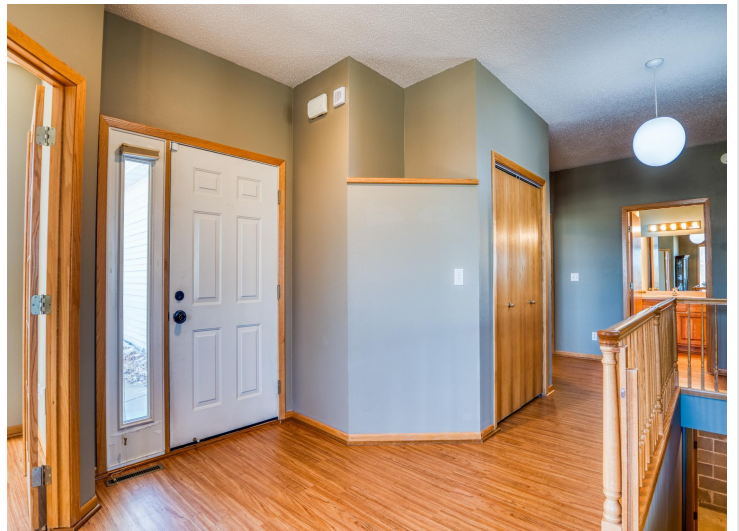
\$449,900
MLS 6680633 Lake Home
500 Irving Beach Drive
Bemidji MN 56601



website: www.AffinityRealEstate.com | email: info@affinityrealestate.com | office: 218-237-3333 | fax:218-237-3377

Affinity
REAL ESTATE INC

\$449,900
MLS 6680633 Lake Home
500 Irving Beach Drive
Bemidji MN 56601



website: www.AffinityRealEstate.com | email: info@affinityrealestate.com | office: 218-237-3333 | fax: 218-237-3377

Affinity
REAL ESTATE INC

\$449,900
MLS 6680633 Lake Home
500 Irving Beach Drive
Bemidji MN 56601



website: www.AffinityRealEstate.com | email: info@affinityrealestate.com | office: 218-237-3333 | fax:218-237-3377

Affinity
REAL ESTATE INC

\$449,900
MLS 6680633 Lake Home
500 Irving Beach Drive
Bemidji MN 56601



website: www.AffinityRealEstate.com | email: info@affinityrealestate.com | office: 218-237-3333 | fax:218-237-3377

Affinity
REAL ESTATE INC

\$449,900
MLS 6680633 Lake Home
500 Irving Beach Drive
Bemidji MN 56601



website: www.AffinityRealEstate.com | email: info@affinityrealestate.com | office: 218-237-3333 | fax:218-237-3377



\$449,900
MLS 6680633 Lake Home
500 Irving Beach Drive
Bemidji MN 56601



website: www.AffinityRealEstate.com | email: info@affinityrealestate.com | office: 218-237-3333 | fax:218-237-3377

Affinity
REAL ESTATE INC

\$449,900
MLS 6680633 Lake Home
500 Irving Beach Drive
Bemidji MN 56601