



MLS 6680760 Lake Home

\$549,000

2,646 sq ft
3 bedrooms
2 baths

31245 Evenhurst Road
Ashby MN 56309

Waterfront: Pelican

Status: Active

Description:

Stunning Year-Round Log Home on Pelican Lake near Ashby, MN!

Enjoy lakeside living with this breathtaking custom log home, perfect for year-round living or a weekend lake retreat. Designed to capture the true essence of "Up North" living, this 3-bedroom, 2-bath beauty blends rustic charm with modern conveniences.

Step inside and be greeted by warm log interiors, soaring ceilings, and two stunning stone fireplaces—the perfect spots to cozy up on cool evenings. The loft adds a touch of charm, while bonus spaces provide for relaxation and entertainment. The lower-level family room is set up as a theater, offering a cinematic experience right at home, and there's even a sauna room for the ultimate in relaxation.

Recent tasteful updates enhance the home's cozy cabin feel while still enjoying modern amenities. Large windows and a lake-side deck showcase breathtaking lake views and spectacular western sunsets over Pelican Lake.

Outdoor entertaining is effortless with a built-in stone barbecue, a beautiful stone patio with a fire pit, and plenty of space to enjoy the fresh Minnesota air. A double-attached garage plus an additional detached garage provide ample storage for all your lake toys and vehicles.

Pelican Lake is known for it's year round fishing, boating, tubing and skiing.

Don't miss this rare opportunity to own your dream log home on the lake. Come see it for yourself—see you at the lake!

Additional Details:

Year Built	1982
Lot Acres	0.4
Lot Dimensions	100x150
Garage Stalls	3
School District	261
Taxes	\$3,298
Taxes with Assessments	\$3,298
Tax Year	2024

Additional Features:

Fuel: Propane **Heat:** Forced Air, Fireplace(s)



Listed By:
Century 21 Atwood

From County Rd 62 out of Ashby. Turn South on County Rd 19 and the turn West or right on to Big Island Rd/57. Evenhurst Road is towards the point. Turn right on Evenhurst and property is on left.
Affinity Real Estate Inc. participates in the Regional Multiple Listing Service of Minnesota, Inc Broker Reciprocity (sm) program, allowing us to display other broker's listings on our website. All properties are subject to prior sale, change or withdrawal.



Call Affinity Real Estate

218-237-3333

info@affinityrealestate.com



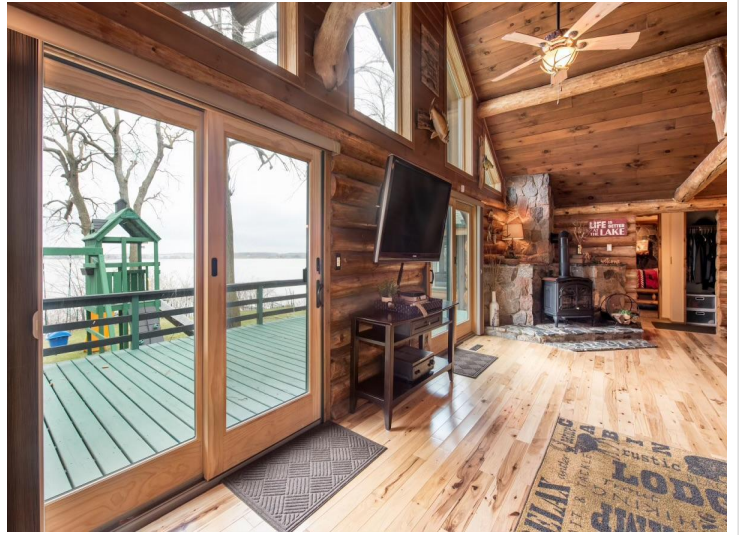
Affinity Real Estate - 600 Park Avenue South - Park Rapids MN 56470



website: www.AffinityRealEstate.com | email: info@affinityrealestate.com | office: 218-237-3333 | fax: 218-237-3377

Affinity
REAL ESTATE INC

\$549,000
MLS 6680760 Lake Home
31245 Evenhurst Road
Ashby MN 56309



website: www.AffinityRealEstate.com | email: info@affinityrealestate.com | office: 218-237-3333 | fax:218-237-3377

Affinity
REAL ESTATE INC

\$549,000
MLS 6680760 Lake Home
31245 Evenhurst Road
Ashby MN 56309



website: www.AffinityRealEstate.com | email: info@affinityrealestate.com | office: 218-237-3333 | fax: 218-237-3377

Affinity
REAL ESTATE INC

\$549,000
MLS 6680760 Lake Home
31245 Evenhurst Road
Ashby MN 56309



website: www.AffinityRealEstate.com | email: info@affinityrealestate.com | office: 218-237-3333 | fax:218-237-3377



\$549,000
MLS 6680760 Lake Home
31245 Evenhurst Road
Ashby MN 56309



website: www.AffinityRealEstate.com | email: info@affinityrealestate.com | office: 218-237-3333 | fax:218-237-3377

Affinity
REAL ESTATE INC

\$549,000
MLS 6680760 Lake Home
31245 Evenhurst Road
Ashby MN 56309



website: www.AffinityRealEstate.com | email: info@affinityrealestate.com | office: 218-237-3333 | fax: 218-237-3377

Affinity
REAL ESTATE INC

\$549,000
MLS 6680760 Lake Home
31245 Evenhurst Road
Ashby MN 56309



website: www.AffinityRealEstate.com | email: info@affinityrealestate.com | office: 218-237-3333 | fax: 218-237-3377

Affinity
REAL ESTATE INC

\$549,000
MLS 6680760 Lake Home
31245 Evenhurst Road
Ashby MN 56309



website: www.AffinityRealEstate.com | email: info@affinityrealestate.com | office: 218-237-3333 | fax:218-237-3377



\$549,000
MLS 6680760 Lake Home
31245 Evenhurst Road
Ashby MN 56309