



MLS 6681263 Residential

\$355,000

1,680 sq ft
3 bedrooms
3 baths

15633 Explorer Lane
Park Rapids MN 56470

Status: Active

Description:

Light and airy 3 bedroom 3 bath home located close to the Headwaters golf course and the Heartland Trail The home features vaulted ceilings, a beautiful kitchen and a cozy living room with a stone fireplace. The attached oversized garage has in-floor heat for those cold winter mornings. The patio has a retractable sun shade, the large yard has lots of flowers, fruit trees and strawberry plants. The in-ground sprinklers make it easy to care for.

Additional Details:

Year Built	2005
Lot Acres	0.69
Lot Dimensions	140x105
Garage Stalls	2
School District	309
Taxes	\$1,682
Taxes with Assessments	\$1,892
Tax Year	2024

Additional Features:

Basement: Slab **Fuel:** Natural Gas **Garage:** 2 **Heat:** Fireplace(s), Radiant Floor **Sewer:** Tank with Drainage Field **Water:** Drilled, Well **Air Conditioning:** Central Air

Driving Directions:

East on 34, turn left onto Central Ave to Explorer Circle. Follow to Explorer Lane



Listed By:
Coldwell Banker Crown Realtors

Affinity Real Estate Inc. participates in the Regional Multiple Listing Service of Minnesota, Inc Broker Reciprocity (sm) program, allowing us to display other broker's listings on our website. All properties are subject to prior sale, change or withdrawal.



Call Affinity Real Estate

218-237-3333

info@affinityrealestate.com



Affinity Real Estate - 600 Park Avenue South - Park Rapids MN 56470



website: www.AffinityRealEstate.com | email: info@affinityrealestate.com | office: 218-237-3333 | fax:218-237-3377



\$355,000
MLS 6681263 Residential
15633 Explorer Lane
Park Rapids MN 56470



website: www.AffinityRealEstate.com | email: info@affinityrealestate.com | office: 218-237-3333 | fax: 218-237-3377

Affinity
REAL ESTATE INC

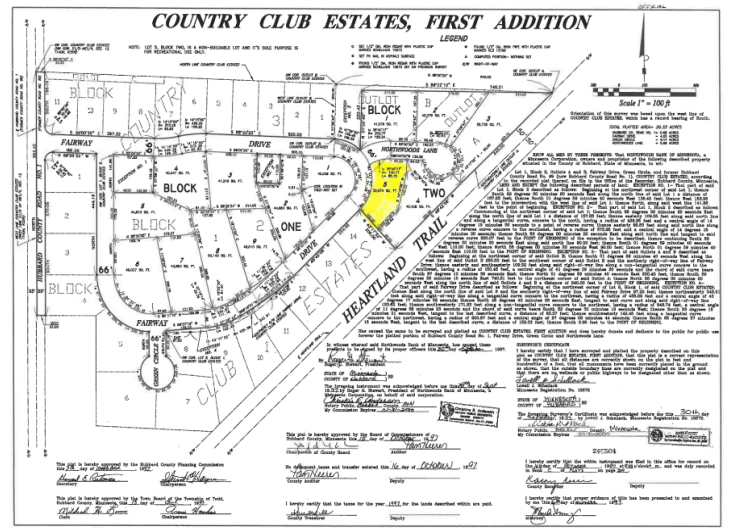
\$355,000
MLS 6681263 Residential
15633 Explorer Lane
Park Rapids MN 56470



website: www.AffinityRealEstate.com | email: info@affinityrealestate.com | office: 218-237-3333 | fax:218-237-3377

Affinity
REAL ESTATE INC

\$355,000
MLS 6681263 Residential
15633 Explorer Lane
Park Rapids MN 56470



website: www.AffinityRealEstate.com | email: info@affinityrealestate.com | office: 218-237-3333 | fax: 218-237-3377



\$355,000
 MLS 6681263 Residential
 15633 Explorer Lane
 Park Rapids MN 56470