



MLS 6681266 Residential

\$599,000

2,803 sq ft
3 bedrooms
2 baths

3403 68th Avenue
Akeley MN 56433

Status: Active

Description:

Attention horse lovers – Pine Valley Stable is calling your name! This Stunning log home stands proudly over this 10 acre farmstead with quintessential barn featuring 10 oak stalls, tack room, blacksmith shop, hay storage, and newer steel roof. Partial fencing divided into several paddocks and well for 2 self-watering stations. There is an arena and training area, pasture as well as a wooded area for riding. A covered porch is the perfect entry to the log home featuring an open floor plan with vaulted ceiling. The kitchen is equipped with custom maple cabinets, stainless steel appliances, granite countertops and a maple butcher block center island. There is a gas burning fireplace in the living room, office nook and ample closet space. The primary bedroom is on the main level with walk-thru bath that includes a jetted tub and tile shower. Log stairs lead to a loft bedroom with a deck overlooking the pasture and barn. The lower level offers a bedroom, full bath, living room with epoxy flooring, a laundry room, utility room and private library. The detached garage is divided into two sections: a two-car heated garage and a single stall with stairs leading to a two-bedroom plus loft apartment. Located just 10 minutes from Hackensack and a short jaunt to the Crystal Lake public access with great swimming area. Pine Valley Stable is a horse lover's dream!

Additional Details:

Year Built	2002
Lot Acres	10.1
Lot Dimensions	330x1320
Garage Stalls	3
School District	113
Taxes	\$1,942
Taxes with Assessments	\$2,008
Tax Year	2024

Additional Features:

Basement: Egress Window(s), Finished, Full, Concrete, Walkout **Fuel:** Electric, Propane **Garage:** 3 **Heat:** Dual, Forced Air **Sewer:** Septic System Compliant - Yes **Water:** Submersible - 4 Inch **Air Conditioning:** Central Air

Driving Directions:

From Hackensack, go west on County 40 to right on 68th Ave to #34



Listed By:
Edina Realty, Inc.

Affinity Real Estate Inc. participates in the Regional Multiple Listing Service of Minnesota, Inc Broker Reciprocity (sm) program, allowing us to display other broker's listings on our website. All properties are subject to prior sale, change or withdrawal.



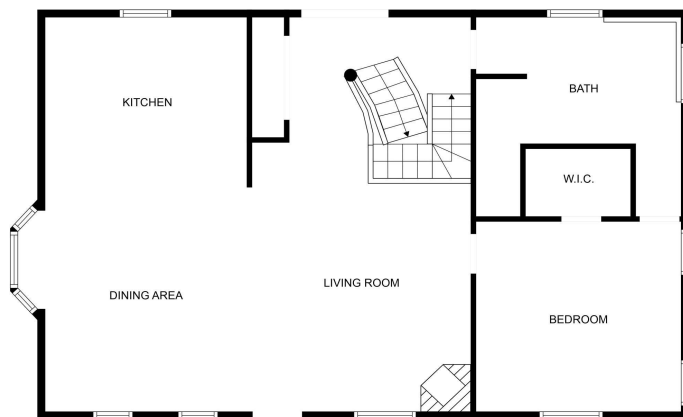
Call Affinity Real Estate

218-237-3333

info@affinityrealestate.com



Affinity Real Estate - 600 Park Avenue South - Park Rapids MN 56470



FLOOR PLAN CREATED BY CURICASA APP. MEASUREMENTS DEEMED HIGHLY RELIABLE BUT NOT GUARANTEED.



website: www.AffinityRealEstate.com | email: info@affinityrealestate.com | office: 218-237-3333 | fax: 218-237-3377

Affinity
REAL ESTATE INC

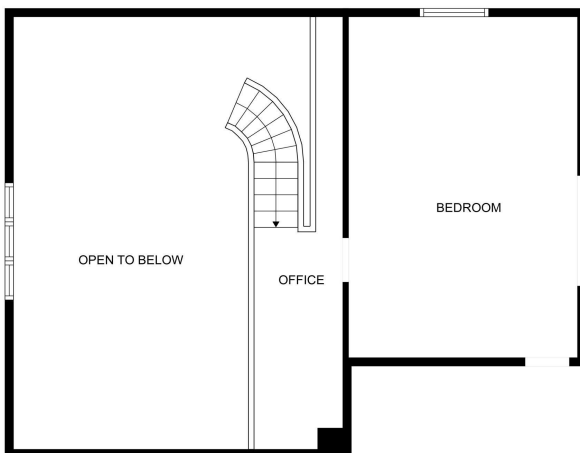
\$599,000
MLS 6681266 Residential
3403 68th Avenue
Akeley MN 56433



website: www.AffinityRealEstate.com | email: info@affinityrealestate.com | office: 218-237-3333 | fax: 218-237-3377

Affinity
REAL ESTATE INC

\$599,000
MLS 6681266 Residential
3403 68th Avenue
Akeley MN 56433



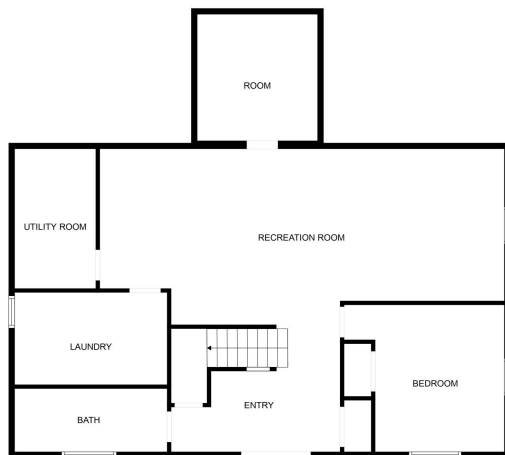
FLOOR PLAN CREATED BY CURICASA APP. MEASUREMENTS DEEMED HIGHLY RELIABLE BUT NOT GUARANTEED.



website: www.AffinityRealEstate.com | email: info@affinityrealestate.com | office: 218-237-3333 | fax: 218-237-3377

Affinity
REAL ESTATE INC

\$599,000
MLS 6681266 Residential
3403 68th Avenue
Akeley MN 56433



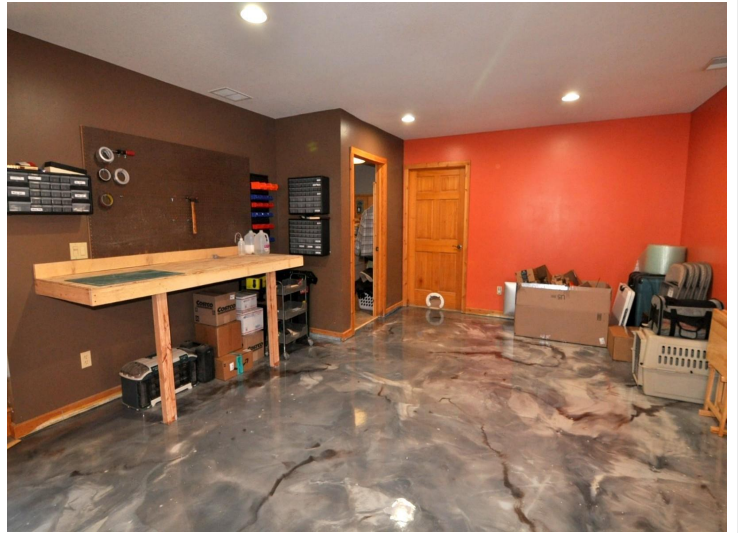
FLOOR PLAN CREATED BY CUBICASA APP. MEASUREMENTS DEEMED HIGHLY RELIABLE BUT NOT GUARANTEED.



website: www.AffinityRealEstate.com | email: info@affinityrealestate.com | office: 218-237-3333 | fax: 218-237-3377

Affinity
REAL ESTATE INC

\$599,000
MLS 6681266 Residential
3403 68th Avenue
Akeley MN 56433



website: www.AffinityRealEstate.com | email: info@affinityrealestate.com | office: 218-237-3333 | fax: 218-237-3377

Affinity
REAL ESTATE INC

\$599,000
MLS 6681266 Residential
3403 68th Avenue
Akeley MN 56433



website: www.AffinityRealEstate.com | email: info@affinityrealestate.com | office: 218-237-3333 | fax: 218-237-3377

Affinity
REAL ESTATE INC

\$599,000
MLS 6681266 Residential
3403 68th Avenue
Akeley MN 56433



website: www.AffinityRealEstate.com | email: info@affinityrealestate.com | office: 218-237-3333 | fax: 218-237-3377

Affinity
REAL ESTATE INC

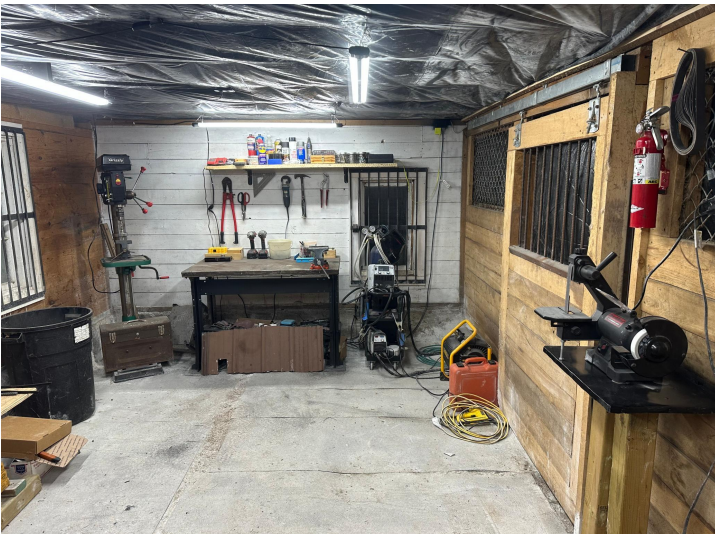
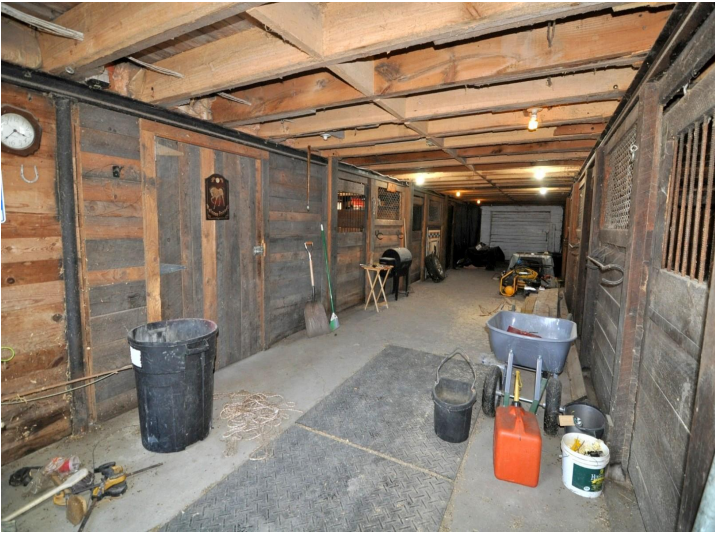
\$599,000
MLS 6681266 Residential
3403 68th Avenue
Akeley MN 56433



website: www.AffinityRealEstate.com | email: info@affinityrealestate.com | office: 218-237-3333 | fax: 218-237-3377

Affinity
REAL ESTATE INC

\$599,000
MLS 6681266 Residential
3403 68th Avenue
Akeley MN 56433



website: www.AffinityRealEstate.com | email: info@affinityrealestate.com | office: 218-237-3333 | fax: 218-237-3377

Affinity
REAL ESTATE INC

\$599,000
MLS 6681266 Residential
3403 68th Avenue
Akeley MN 56433



website: www.AffinityRealEstate.com | email: info@affinityrealestate.com | office: 218-237-3333 | fax: 218-237-3377



\$599,000
 MLS 6681266 Residential
 3403 68th Avenue
 Akeley MN 56433

website: www.AffinityRealEstate.com | email: info@affinityrealestate.com | office: 218-237-3333 | fax:218-237-3377



\$599,000

MLS 6681266 Residential
3403 68th Avenue
Akeley MN 56433

website: www.AffinityRealEstate.com | email: info@affinityrealestate.com | office: 218-237-3333 | fax:218-237-3377



\$599,000

MLS 6681266 Residential
3403 68th Avenue
Akeley MN 56433