



MLS 6682109 Lake Home

\$624,500

3,764 sq ft
4 bedrooms
3 baths

22196 County 17
Park Rapids MN 56470

Waterfront: Sunday

Status: Active

Description:

Welcome to your lakeside retreat! This executive property offers an incredible opportunity to experience peaceful, year-round living or a perfect weekend getaway.

Set on just under 5 acres off paved roads with mature trees and natural landscaping, this property provides both beauty and privacy.

This well-maintained, cozy yet spacious residence with 9' ceilings offers four+ bedrooms and three bathrooms along with an open-concept living area that has panoramic windows that frame beautiful lake views. This home is immaculate!

The lakeside deck runs the length of the home with three patio doors providing access from all areas.

Three outbuildings plus an over-sized attached garage will give you plenty of storage for all your lake living necessities.

Whether you're looking for a tranquil family retreat or the opportunity to work from home, this property is just a short drive to Park Rapids and its local shops, restaurants, and services.

Schedule your showing today!

Additional Details:

Year Built	2021
Lot Acres	4.97
Lot Dimensions	203x837x285x539
Garage Stalls	2
School District	308
Taxes	\$2,528
Taxes with Assessments	\$2,528
Tax Year	2024

Listed By:
Doreen Anderson, Broker
Doreen Anderson Real Estate Agency-Park Rapids

Affinity Real Estate Inc. participates in the Regional Multiple Listing Service of Minnesota, Inc Broker Reciprocity (sm) program, allowing us to display other broker's listings on our website. All properties are subject to prior sale, change of withdrawal.



Call Affinity Real Estate
218-237-3333
info@affinityrealestate.com

MLS REALTOR REAL ESTATE DORSET CORNER. GO

Affinity Real Estate - 600 Park Avenue South - Park Rapids MN 56470



website: www.AffinityRealEstate.com | email: info@affinityrealestate.com | office: 218-237-3333 | fax: 218-237-3377

Affinity
REAL ESTATE INC

\$624,500
MLS 6682109 Lake Home
22196 County 17
Park Rapids MN 56470



website: www.AffinityRealEstate.com | email: info@affinityrealestate.com | office: 218-237-3333 | fax:218-237-3377



\$624,500
MLS 6682109 Lake Home
22196 County 17
Park Rapids MN 56470



website: www.AffinityRealEstate.com | email: info@affinityrealestate.com | office: 218-237-3333 | fax: 218-237-3377



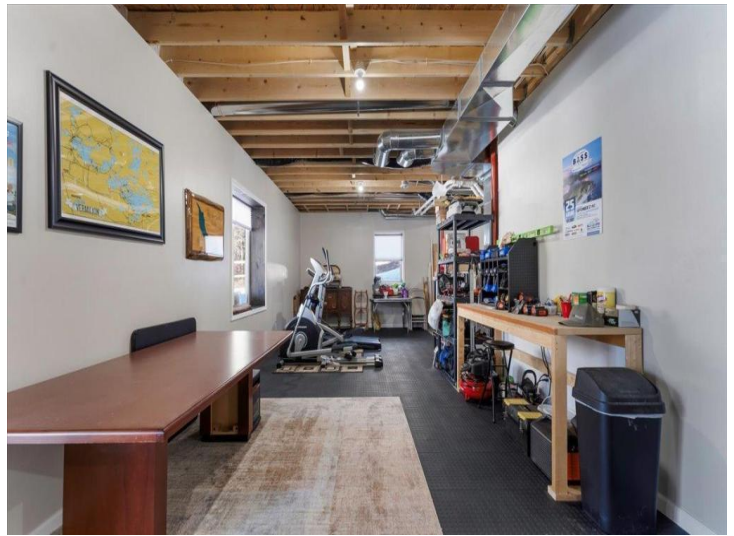
\$624,500
MLS 6682109 Lake Home
22196 County 17
Park Rapids MN 56470



website: www.AffinityRealEstate.com | email: info@affinityrealestate.com | office: 218-237-3333 | fax:218-237-3377

Affinity
REAL ESTATE INC

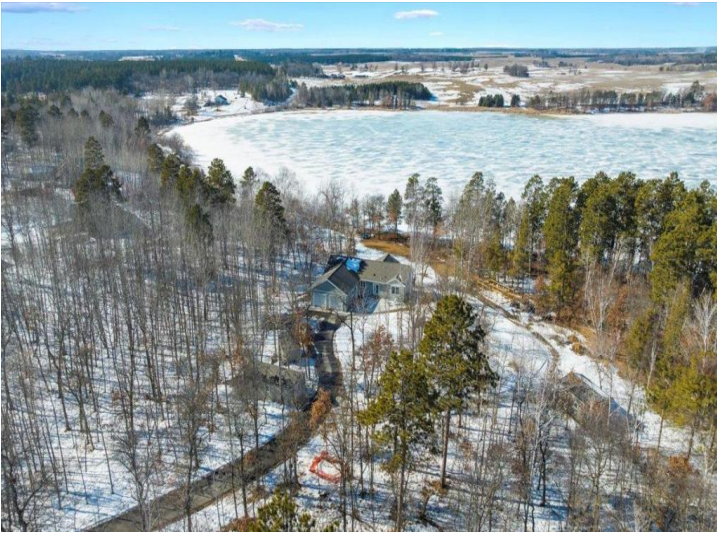
\$624,500
MLS 6682109 Lake Home
22196 County 17
Park Rapids MN 56470



website: www.AffinityRealEstate.com | email: info@affinityrealestate.com | office: 218-237-3333 | fax: 218-237-3377

Affinity
REAL ESTATE INC

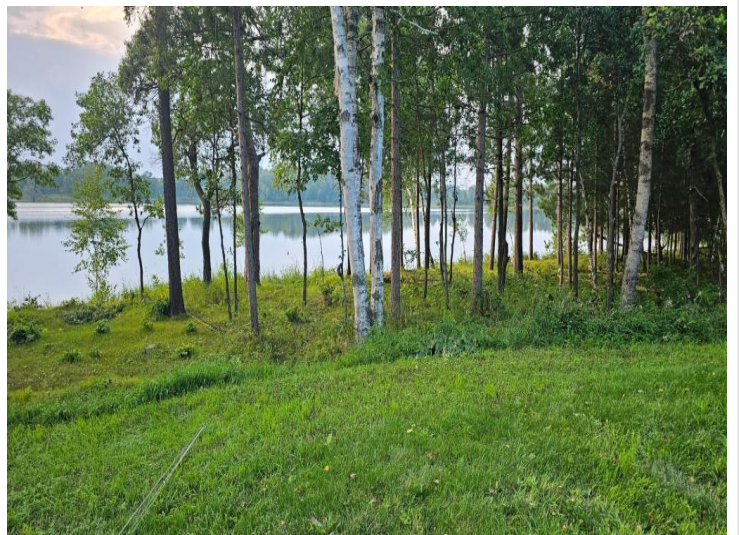
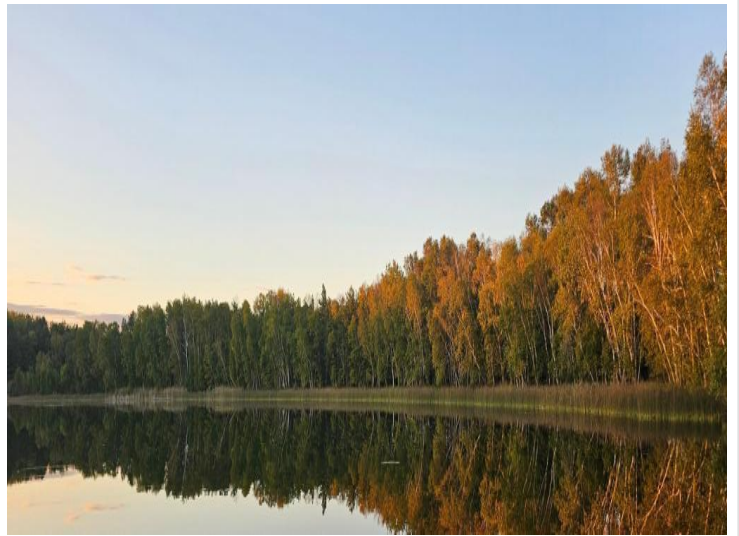
\$624,500
MLS 6682109 Lake Home
22196 County 17
Park Rapids MN 56470



website: www.AffinityRealEstate.com | email: info@affinityrealestate.com | office: 218-237-3333 | fax:218-237-3377



\$624,500
MLS 6682109 Lake Home
22196 County 17
Park Rapids MN 56470



website: www.AffinityRealEstate.com | email: info@affinityrealestate.com | office: 218-237-3333 | fax:218-237-3377



\$624,500
MLS 6682109 Lake Home
22196 County 17
Park Rapids MN 56470



website: www.AffinityRealEstate.com | email: info@affinityrealestate.com | office: 218-237-3333 | fax:218-237-3377



\$624,500
MLS 6682109 Lake Home
22196 County 17
Park Rapids MN 56470