



MLS 6682240 Lake Home

\$869,000

1,621 sq ft
3 bedrooms
2 baths

36722 Birch Drive
Pine River MN 56474

Waterfront: Whitefish Lake
(18031000)

Status: Active

Description:

Fully Remodeled Home on Upper Whitefish Lake!

Enjoy stunning views and a rare boathouse with this beautifully updated lakefront property. The final touches on the remodel will be completed in the coming days, with new photos and videos to follow. This home is being sold fully furnished and has been extensively renovated to include a spacious family and entertaining area flowing out to an amazing lakeside yard!

There is plenty of potential to enhance the property further, including a guest house awaiting a remodel and landscaping. Previously used as a successful vacation rental, new owners have the option to continue renting or keep it as a private getaway. Over the past year, this home has undergone a complete transformation, with only a few finishing details left. Depending on the sale price and timing, the sellers have plans for a lakeside patio and a septic upgrade from two to three-bedroom compliance.


Located in an up-and-coming neighborhood off the beaten path, this home offers some of the most peaceful and picturesque views on the 14-lake Whitefish Chain. With endless opportunities for fishing, boating, and outdoor adventures, this is a prime spot to enjoy all that the Whitefish Chain has to offer!

Additional Details:

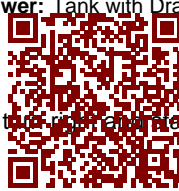
Year Built	1969
Lot Acres	0.66
Lot Dimensions	100x329x95x199
Garage Stalls	3
School District	186
Taxes	\$2,238
Taxes with Assessments	\$2,238
Tax Year	2023

Additional Features:

Basement: Block **Fuel:** Propane **Garage:** 3 **Heat:** Baseboard, Boiler **Sewer:** Tank with Drainage Field **Water:** Drilled **Air Conditioning:** Variable


 Listed By:
 MN Real Estate and Management LLC

Affinity Real Estate on Drive, in the Pine Hills listing and then the right and play to the right.
 Service of Minnesota, Inc Broker Reciprocity (sm) program, allowing us to display other broker's listings on our website. All properties are subject to prior sale, change or withdrawal.



Call Affinity Real Estate
218-237-3333
info@affinityrealestate.com



Affinity Real Estate - 600 Park Avenue South - Park Rapids MN 56470



website: www.AffinityRealEstate.com | email: info@affinityrealestate.com | office: 218-237-3333 | fax:218-237-3377



\$869,000
MLS 6682240 Lake Home
36722 Birch Drive
Pine River MN 56474



website: www.AffinityRealEstate.com | email: info@affinityrealestate.com | office: 218-237-3333 | fax:218-237-3377

Affinity
REAL ESTATE INC

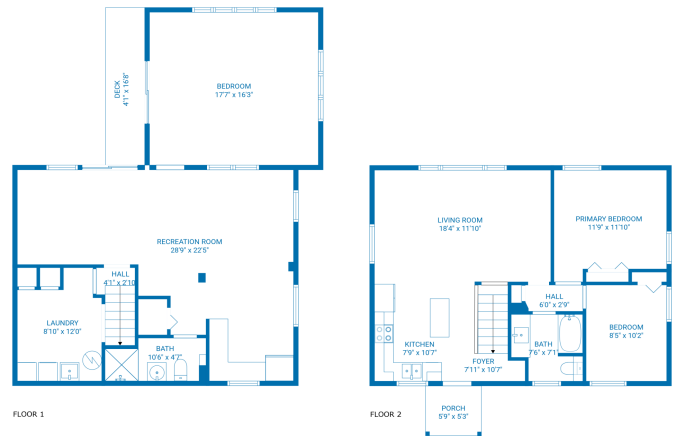
\$869,000
MLS 6682240 Lake Home
36722 Birch Drive
Pine River MN 56474



website: www.AffinityRealEstate.com | email: info@affinityrealestate.com | office: 218-237-3333 | fax: 218-237-3377

Affinity
REAL ESTATE INC

\$869,000
MLS 6682240 Lake Home
36722 Birch Drive
Pine River MN 56474



TOTAL: 1510 sq. ft.
 FLOOR 1: 836 sq. ft., FLOOR 2: 683 sq. ft.
 EXCLUDED AREAS: LAUNDRY: 102 sq. ft., DECK: 168 sq. ft., PORCH: 33 sq. ft.
 FLOOR PLAN CREATED BY CUBESHA AIR MEASUREMENTS DEEMED HIGHLY RELIABLE BUT NOT GUARANTEED.

website: www.AffinityRealEstate.com | email: info@affinityrealestate.com | office: 218-237-3333 | fax: 218-237-3377



\$869,000
 MLS 6682240 Lake Home
 36722 Birch Drive
 Pine River MN 56474



website: www.AffinityRealEstate.com | email: info@affinityrealestate.com | office: 218-237-3333 | fax:218-237-3377

Affinity
REAL ESTATE INC

\$869,000
MLS 6682240 Lake Home
36722 Birch Drive
Pine River MN 56474



website: www.AffinityRealEstate.com | email: info@affinityrealestate.com | office: 218-237-3333 | fax:218-237-3377

Affinity
REAL ESTATE INC

\$869,000
MLS 6682240 Lake Home
36722 Birch Drive
Pine River MN 56474



website: www.AffinityRealEstate.com | email: info@affinityrealestate.com | office: 218-237-3333 | fax:218-237-3377



\$869,000
MLS 6682240 Lake Home
36722 Birch Drive
Pine River MN 56474