



MLS 6682489 Lake Home

**\$494,900**

3,190 sq ft  
4 bedrooms  
3 baths

454 Wagon Wheel Drive  
Bemidji MN 56601

Waterfront: Andrusia

Status: Active

**Description:**

Welcome to Misty Harbor, a private gated community nestled along the picturesque shores of Lake Andrusia, part of the renowned Cass Lake chain. This stunning 4-bedroom, 3-bathroom home spans over 3,000 sq. ft., offering an inviting open floor plan with vaulted ceilings, a main-level master suite, and a spacious great room perfect for entertaining. Additional features include a versatile lofted area, a fully finished basement complete with a bedroom, living space, and a wet bar. The attached 3-stall finished garage provides ample storage for all your needs. As a resident of Misty Harbor, you'll enjoy exclusive access to a private harbor, boat launch, sandy beach, day dock, and a common building designed for group gatherings. With paved roads and approximately 1,400 feet of shared shoreline, this community offers the ultimate lakefront lifestyle. Don't miss the opportunity to own this incredible lakeside retreat!

**Additional Details:**

Year Built	2013
Lot Acres	0.23
Lot Dimensions	100x100
Garage Stalls	3
School District	31
Taxes	\$4,412
Taxes with Assessments	\$4,412
Tax Year	2023

**Additional Features:**

**Basement:** Full **Fuel:** Electric, Propane **Garage:** 3 **Heat:** Dual **Sewer:** Shared Septic **Water:** Shared System **Air Conditioning:** Central Air

**Driving Directions:**

Roosevelt Rd, to stocking Lake rd (newly paved) , to Wagon Wheel Dr



Listed By:  
Grimes Realty

Affinity Real Estate Inc. participates in the Regional Multiple Listing Service of Minnesota, Inc Broker Reciprocity (sm) program, allowing us to display other broker's listings on our website. All properties are subject to prior sale, change or withdrawal.



**Call Affinity Real Estate**

**218-237-3333**

**info@affinityrealestate.com**



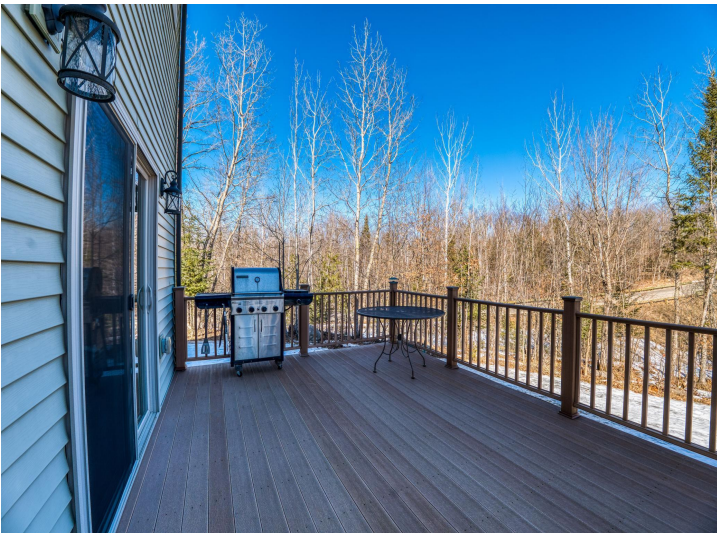
**Affinity Real Estate - 600 Park Avenue South - Park Rapids MN 56470**



website: [www.AffinityRealEstate.com](http://www.AffinityRealEstate.com) | email: [info@affinityrealestate.com](mailto:info@affinityrealestate.com) | office: 218-237-3333 | fax:218-237-3377

**Affinity**  
REAL ESTATE INC

**\$494,900**  
MLS 6682489 Lake Home  
454 Wagon Wheel Drive  
Bemidji MN 56601



website: [www.AffinityRealEstate.com](http://www.AffinityRealEstate.com) | email: [info@affinityrealestate.com](mailto:info@affinityrealestate.com) | office: 218-237-3333 | fax:218-237-3377

**Affinity**  
REAL ESTATE INC

**\$494,900**  
MLS 6682489 Lake Home  
454 Wagon Wheel Drive  
Bemidji MN 56601



website: [www.AffinityRealEstate.com](http://www.AffinityRealEstate.com) | email: [info@affinityrealestate.com](mailto:info@affinityrealestate.com) | office: 218-237-3333 | fax:218-237-3377

**Affinity**  
REAL ESTATE INC

**\$494,900**  
MLS 6682489 Lake Home  
454 Wagon Wheel Drive  
Bemidji MN 56601



website: [www.AffinityRealEstate.com](http://www.AffinityRealEstate.com) | email: [info@affinityrealestate.com](mailto:info@affinityrealestate.com) | office: 218-237-3333 | fax: 218-237-3377

**Affinity**  
REAL ESTATE INC

**\$494,900**  
MLS 6682489 Lake Home  
454 Wagon Wheel Drive  
Bemidji MN 56601



website: [www.AffinityRealEstate.com](http://www.AffinityRealEstate.com) | email: [info@affinityrealestate.com](mailto:info@affinityrealestate.com) | office: 218-237-3333 | fax:218-237-3377



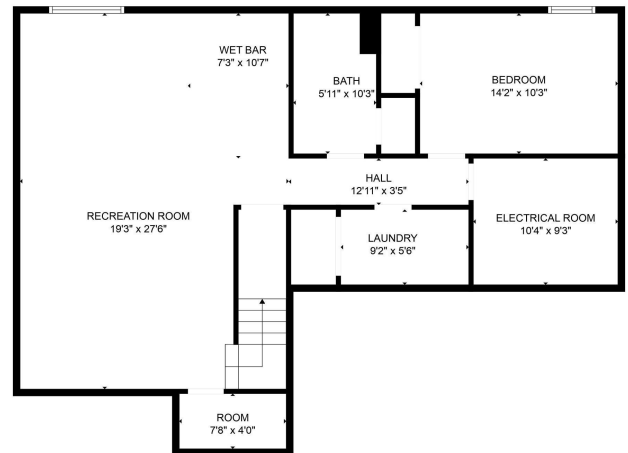
**\$494,900**  
MLS 6682489 Lake Home  
454 Wagon Wheel Drive  
Bemidji MN 56601



website: [www.AffinityRealEstate.com](http://www.AffinityRealEstate.com) | email: [info@affinityrealestate.com](mailto:info@affinityrealestate.com) | office: 218-237-3333 | fax: 218-237-3377

**Affinity**  
REAL ESTATE INC

**\$494,900**  
MLS 6682489 Lake Home  
454 Wagon Wheel Drive  
Bemidji MN 56601



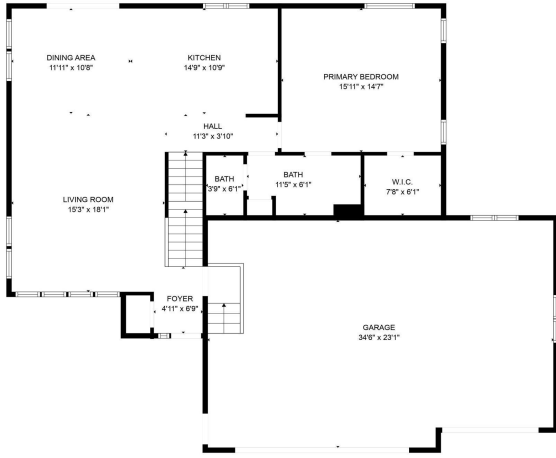
FLOOR PLAN CREATED BY CURBCASA APP. MEASUREMENTS DEEMED HIGHLY RELIABLE BUT NOT GUARANTEED.

website: [www.AffinityRealEstate.com](http://www.AffinityRealEstate.com) | email: [info@affinityrealestate.com](mailto:info@affinityrealestate.com) | office: 218-237-3333 | fax: 218-237-3377

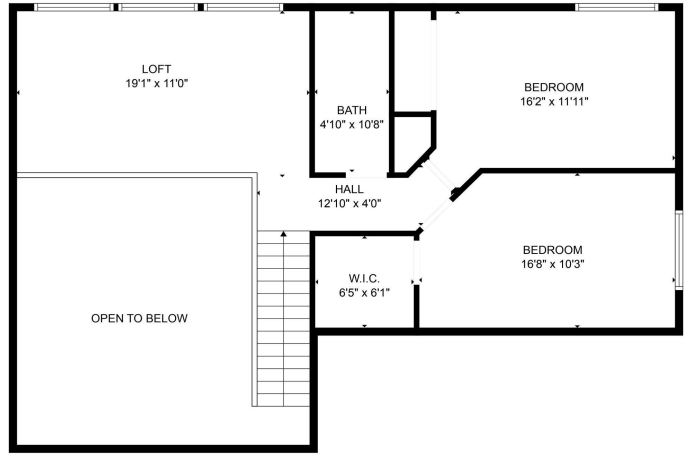


**\$494,900**  
 MLS 6682489 Lake Home  
 454 Wagon Wheel Drive  
 Bemidji MN 56601





FLOOR PLAN CREATED BY CUBICASA APP. MEASUREMENTS DEEMED HIGHLY RELIABLE BUT NOT GUARANTEED.



FLOOR PLAN CREATED BY CUBICASA APP. MEASUREMENTS DEEMED HIGHLY RELIABLE BUT NOT GUARANTEED.



FLOOR PLAN CREATED BY CUBICASA APP. MEASUREMENTS DEEMED HIGHLY RELIABLE BUT NOT GUARANTEED.



FLOOR PLAN CREATED BY CUBICASA APP. MEASUREMENTS DEEMED HIGHLY RELIABLE BUT NOT GUARANTEED.

website: [www.AffinityRealEstate.com](http://www.AffinityRealEstate.com) | email: [info@affinityrealestate.com](mailto:info@affinityrealestate.com) | office: 218-237-3333 | fax:218-237-3377



**\$494,900**  
 MLS 6682489 Lake Home  
 454 Wagon Wheel Drive  
 Bemidji MN 56601