



MLS 6682572 Lake Home

\$1,250,000

2,595 sq ft
3 bedrooms
2 baths

11766 Island Shore Lane
Park Rapids MN 56470

Waterfront: Island Lake (Arago
Twp.)

Status: Coming Soon


Description:

Discover your dream retreat on Island Lake. If you've been searching for the perfect blend of nature and comfort, look no further than this stunning log home nestled among towering pine trees and the serene shores of Island Lake. Step inside to find a custom kitchen that will delight any culinary enthusiast. Featuring elegant cherry wood cabinets, a Viking countertop gas stove, a microwave/oven combo, and a convenient garbage disposal, this kitchen is as functional as it is beautiful. The lakeside dining and living room combination boasts a full view of the expansive deck, where you can entertain or simply relax while taking in the stunning scenery. With maple hardwood flooring and a cozy gas fireplace, this space provides warmth and comfort year-round. On the main floor, you'll find two inviting bedrooms and a conveniently located 3/4 bath. Venture to the upper level, where a spacious loft awaits, ready to be transformed into your personal sanctuary, office, or hobby space. The large primary bedroom also resides on this level, complete with a private full bath featuring a luxurious jet tub and a separate shower for your relaxation. The lower level is a blank canvas, brimming with potential. With a walk-out family room, plumbing for an additional bathroom, and a partially finished bedroom, this space is ready for your creative touch. Set on a peaceful "end of the road" location, this property boasts 150 feet of sand lakeshore, wrap-around decks, and a covered patio on the lower level. The beautifully landscaped perennial gardens and tiered landscaping enhance the natural beauty of your surroundings. Island Lake is renowned for its exceptional fishing year-round, and you'll find yourself perfectly situated between Itasca State Park and Park Rapids, with easy access to recreational trails and golf courses. Don't miss your chance to own this slice of paradise. Call today to schedule your appointment and start your journey to lakeside living!

Additional Details:

Year Built	2000
Lot Acres	0.92
Lot Dimensions	150 x 268
School District	309
Taxes	\$6,196
Taxes with Assessments	\$6,406
Tax Year	2024

Additional Features:



Heat: Forced Air, Fireplace(s)
Listed By:
Affinity Real Estate Inc.

Affinity Real Estate Inc. participates in the Regional Multiple Listing Service of Minnesota, Inc. Broker Reciprocity (sm) program, allowing us to display other broker's listings on our website. All properties are subject to prior sale, change or withdrawal.



Call Affinity Real Estate

218-237-3333

info@affinityrealestate.com



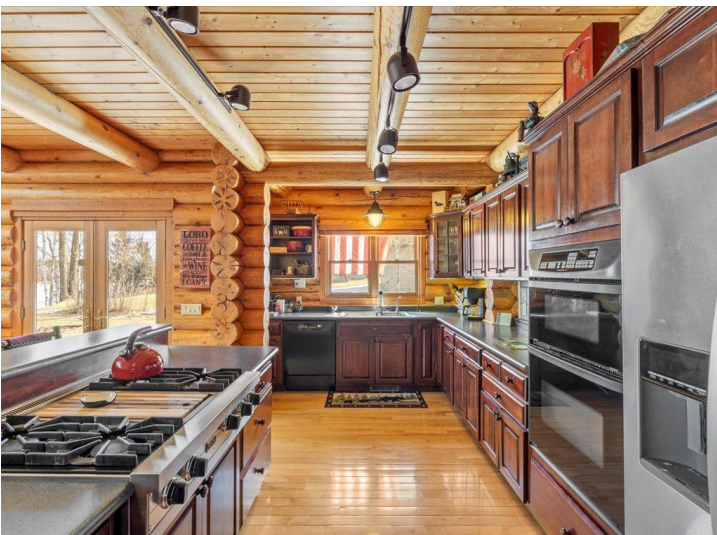
Affinity Real Estate - 600 Park Avenue South - Park Rapids MN 56470



website: www.AffinityRealEstate.com | email: info@affinityrealestate.com | office: 218-237-3333 | fax:218-237-3377



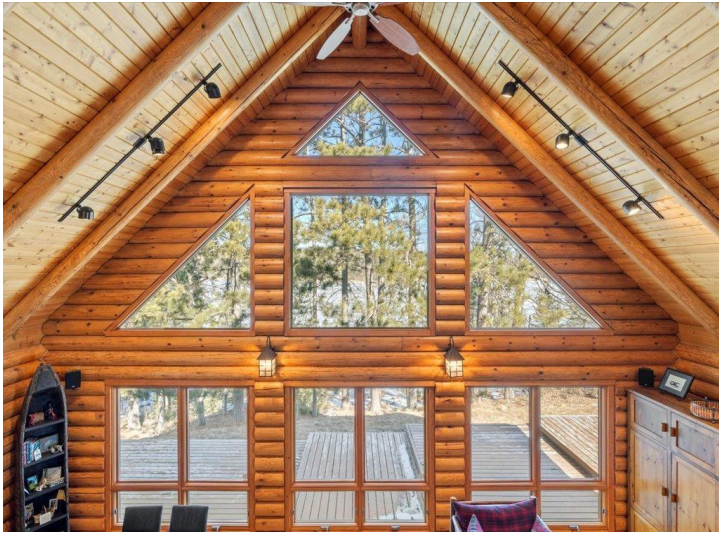
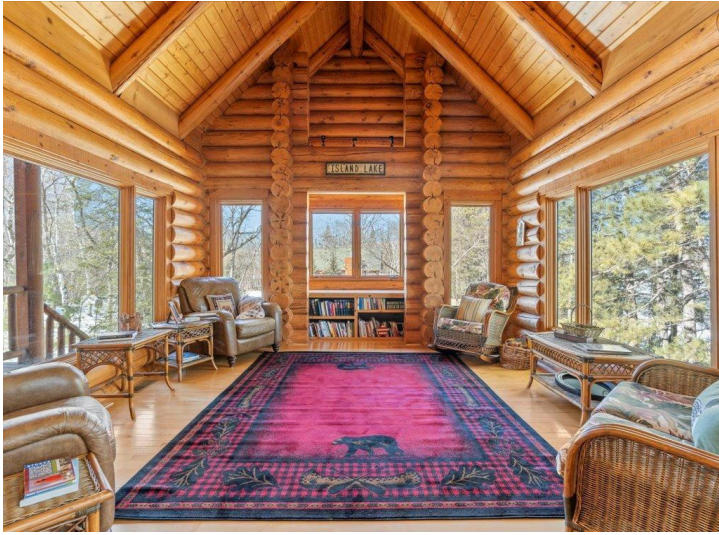
\$1,250,000
MLS 6682572 Lake Home
11766 Island Shore Lane
Park Rapids MN 56470



website: www.AffinityRealEstate.com | email: info@affinityrealestate.com | office: 218-237-3333 | fax: 218-237-3377

Affinity
REAL ESTATE INC

\$1,250,000
MLS 6682572 Lake Home
11766 Island Shore Lane
Park Rapids MN 56470



website: www.AffinityRealEstate.com | email: info@affinityrealestate.com | office: 218-237-3333 | fax: 218-237-3377

Affinity
REAL ESTATE INC

\$1,250,000
MLS 6682572 Lake Home
11766 Island Shore Lane
Park Rapids MN 56470



website: www.AffinityRealEstate.com | email: info@affinityrealestate.com | office: 218-237-3333 | fax: 218-237-3377

Affinity
REAL ESTATE INC

\$1,250,000
MLS 6682572 Lake Home
11766 Island Shore Lane
Park Rapids MN 56470



website: www.AffinityRealEstate.com | email: info@affinityrealestate.com | office: 218-237-3333 | fax: 218-237-3377

Affinity
REAL ESTATE INC

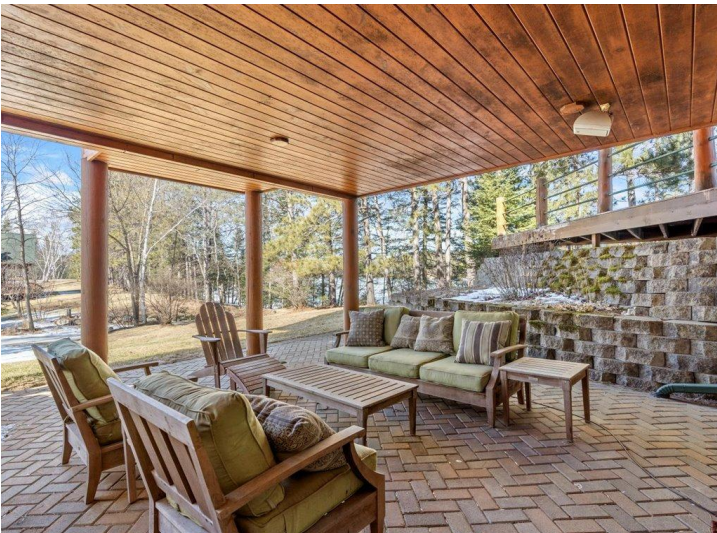
\$1,250,000
MLS 6682572 Lake Home
11766 Island Shore Lane
Park Rapids MN 56470



website: www.AffinityRealEstate.com | email: info@affinityrealestate.com | office: 218-237-3333 | fax:218-237-3377



\$1,250,000
MLS 6682572 Lake Home
11766 Island Shore Lane
Park Rapids MN 56470



website: www.AffinityRealEstate.com | email: info@affinityrealestate.com | office: 218-237-3333 | fax:218-237-3377

Affinity
REAL ESTATE INC

\$1,250,000
MLS 6682572 Lake Home
11766 Island Shore Lane
Park Rapids MN 56470



website: www.AffinityRealEstate.com | email: info@affinityrealestate.com | office: 218-237-3333 | fax:218-237-3377



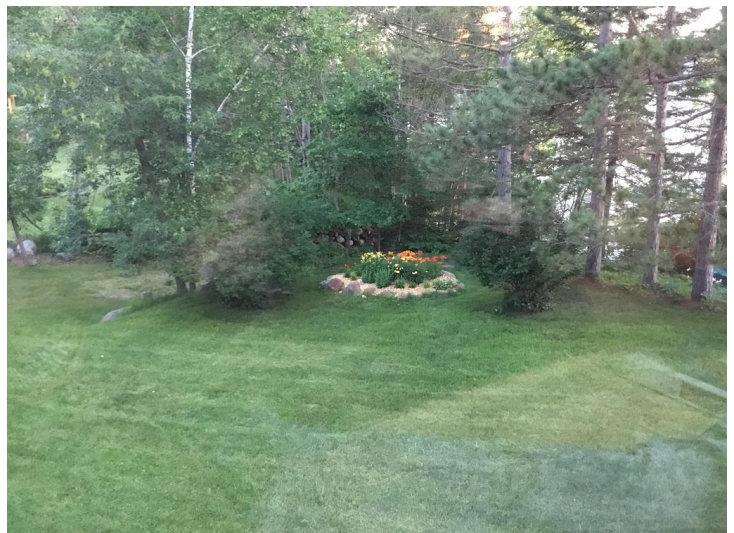
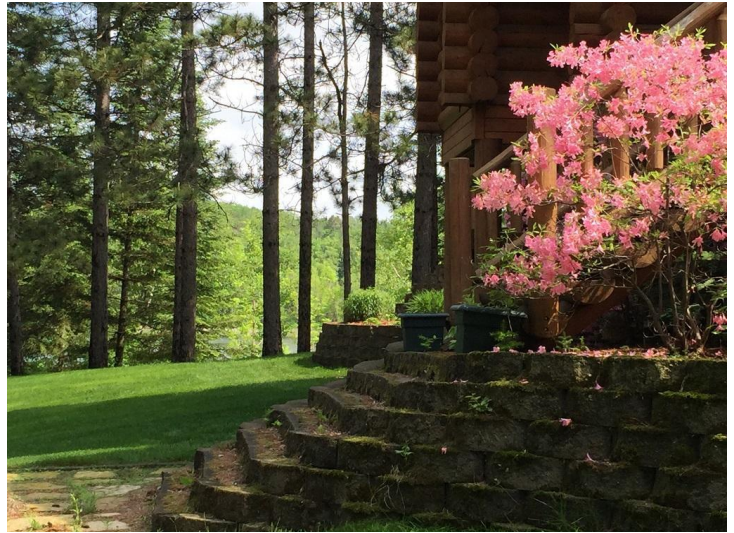
\$1,250,000
MLS 6682572 Lake Home
11766 Island Shore Lane
Park Rapids MN 56470



website: www.AffinityRealEstate.com | email: info@affinityrealestate.com | office: 218-237-3333 | fax:218-237-3377



\$1,250,000
MLS 6682572 Lake Home
11766 Island Shore Lane
Park Rapids MN 56470



website: www.AffinityRealEstate.com | email: info@affinityrealestate.com | office: 218-237-3333 | fax:218-237-3377



\$1,250,000
MLS 6682572 Lake Home
11766 Island Shore Lane
Park Rapids MN 56470