



MLS 6683135 Residential

**\$224,000**

1,335 sq ft  
4 bedrooms  
1 baths

301 Lake Avenue  
Park Rapids MN 56470

Status: Pending

#### Description:

This stunning 4-bedroom home has been completely transformed with modern updates throughout! Enjoy brand new flooring, fresh paint, a stylish kitchen with stainless steel appliances, new furnace, new A/C and all-new siding and doors. The main floor features an updated bedroom and bathroom, while the upper level offers three additional bedrooms. The full basement, with high ceilings and rough-in plumbing for a second bathroom, provides endless possibilities. Outside you'll find a newly sided, oversized 2-stall garage with a deck on each side of the house. Nestled on a corner lot in a peaceful neighborhood, this home is conveniently close to schools, a grocery store, a bank, and a hospital. Move-in ready and perfect for those seeking comfort, style, and convenience!

#### Additional Details:

Year Built	1914
Lot Acres	0.16
Lot Dimensions	140x50
Garage Stalls	2
School District	309
Taxes	\$1,492
Taxes with Assessments	\$1,702
Tax Year	2024

#### Additional Features:

**Basement:** Full, Unfinished **Fuel:** Natural Gas **Garage:** 2 **Heat:** Forced Air **Sewer:** City Sewer/Connected **Water:** City Water/Connected **Air Conditioning:** Central Air

#### Driving Directions:

From 34/Main head north 2 block and take a left. Property will be on the right.



Listed By:  
Keller Williams Realty Professionals

Affinity Real Estate Inc. participates in the Regional Multiple Listing Service of Minnesota, Inc Broker Reciprocity (sm) program, allowing us to display other broker's listings on our website. All properties are subject to prior sale, change or withdrawal.



Call Affinity Real Estate

**218-237-3333**

[info@affinityrealestate.com](mailto:info@affinityrealestate.com)



Affinity Real Estate - 600 Park Avenue South - Park Rapids MN 56470





website: [www.AffinityRealEstate.com](http://www.AffinityRealEstate.com) | email: [info@affinityrealestate.com](mailto:info@affinityrealestate.com) | office: 218-237-3333 | fax: 218-237-3377



**\$224,000**  
 MLS 6683135 Residential  
 301 Lake Avenue  
 Park Rapids MN 56470





website: [www.AffinityRealEstate.com](http://www.AffinityRealEstate.com) | email: [info@affinityrealestate.com](mailto:info@affinityrealestate.com) | office: 218-237-3333 | fax: 218-237-3377

**Affinity**  
REAL ESTATE INC

**\$224,000**  
MLS 6683135 Residential  
301 Lake Avenue  
Park Rapids MN 56470





website: [www.AffinityRealEstate.com](http://www.AffinityRealEstate.com) | email: [info@affinityrealestate.com](mailto:info@affinityrealestate.com) | office: 218-237-3333 | fax: 218-237-3377



**\$224,000**  
 MLS 6683135 Residential  
 301 Lake Avenue  
 Park Rapids MN 56470



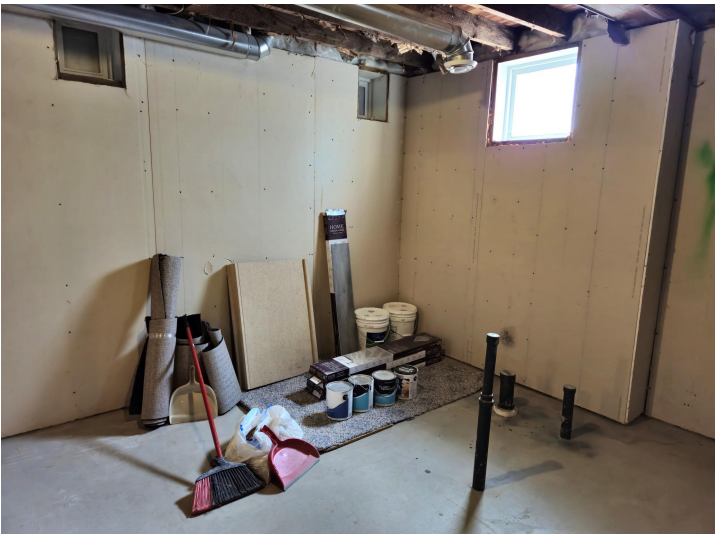


website: [www.AffinityRealEstate.com](http://www.AffinityRealEstate.com) | email: [info@affinityrealestate.com](mailto:info@affinityrealestate.com) | office: 218-237-3333 | fax: 218-237-3377



**\$224,000**  
 MLS 6683135 Residential  
 301 Lake Avenue  
 Park Rapids MN 56470





website: [www.AffinityRealEstate.com](http://www.AffinityRealEstate.com) | email: [info@affinityrealestate.com](mailto:info@affinityrealestate.com) | office: 218-237-3333 | fax: 218-237-3377

**Affinity**  
REAL ESTATE INC

**\$224,000**  
MLS 6683135 Residential  
301 Lake Avenue  
Park Rapids MN 56470