



MLS 6683172 Residential

**\$225,000**

2,140 sq ft  
3 bedrooms  
2 baths

108 26th Street  
Bemidji MN 56601

Status: Closed

#### Description:

This 3 bedroom mid-century home, in a great location just 1 1/2 blocks from Lake Bemidji, is ready for new owners! Major updates have been completed; windows have been replaced over the years (including the gorgeous picture window), new roof in 2021, updated furnace, water heater and plumbing. Hardwood floors, attached garage, beautiful perennial gardens, completely fenced backyard, garden shed and a backyard studio with electricity that can be used seasonally as entertaining space are all included with this property. Cameron Park on Lake Bemidji is just down the block and has a swimming beach, bathhouse, boat launch, playground and picnic pavilion. You could make a visit to the lake every day ~ set up your showing today!

#### Additional Details:

Year Built	1954
Lot Acres	0.16
Lot Dimensions	63x110
Garage Stalls	2
School District	31
Taxes	\$2,512
Taxes with Assessments	\$2,764
Tax Year	2024

#### Additional Features:

**Basement:** Block, Finished, Full **Fuel:** Natural Gas **Garage:** 2 **Heat:** Forced Air **Sewer:** City Sewer/Connected **Water:** City Water/Connected **Air Conditioning:** Window Unit(s)

#### Driving Directions:

From Downtown Bemidji: North on Bemidji Ave to 26th ST NE. Right on 26th, go 1/2 block, residence on the right.



Listed By:  
Lake-N-Woods Realty

Affinity Real Estate Inc. participates in the Regional Multiple Listing Service of Minnesota, Inc Broker Reciprocity (sm) program, allowing us to display other broker's listings on our website. All properties are subject to prior sale, change or withdrawal.



Call Affinity Real Estate

**218-237-3333**

[info@affinityrealestate.com](mailto:info@affinityrealestate.com)



Affinity Real Estate - 600 Park Avenue South - Park Rapids MN 56470





website: [www.AffinityRealEstate.com](http://www.AffinityRealEstate.com) | email: [info@affinityrealestate.com](mailto:info@affinityrealestate.com) | office: 218-237-3333 | fax: 218-237-3377



**\$225,000**  
 MLS 6683172 Residential  
 108 26th Street  
 Bemidji MN 56601





website: [www.AffinityRealEstate.com](http://www.AffinityRealEstate.com) | email: [info@affinityrealestate.com](mailto:info@affinityrealestate.com) | office: 218-237-3333 | fax: 218-237-3377



**\$225,000**  
 MLS 6683172 Residential  
 108 26th Street  
 Bemidji MN 56601



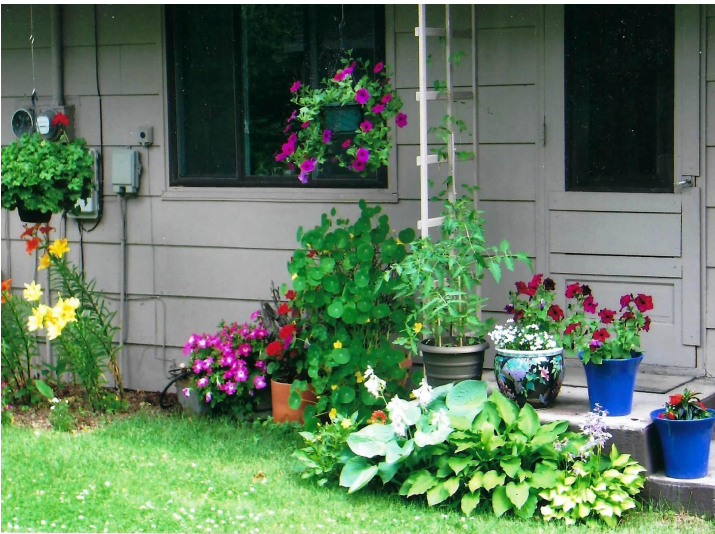


website: [www.AffinityRealEstate.com](http://www.AffinityRealEstate.com) | email: [info@affinityrealestate.com](mailto:info@affinityrealestate.com) | office: 218-237-3333 | fax: 218-237-3377

**Affinity**  
REAL ESTATE INC

**\$225,000**  
MLS 6683172 Residential  
108 26th Street  
Bemidji MN 56601



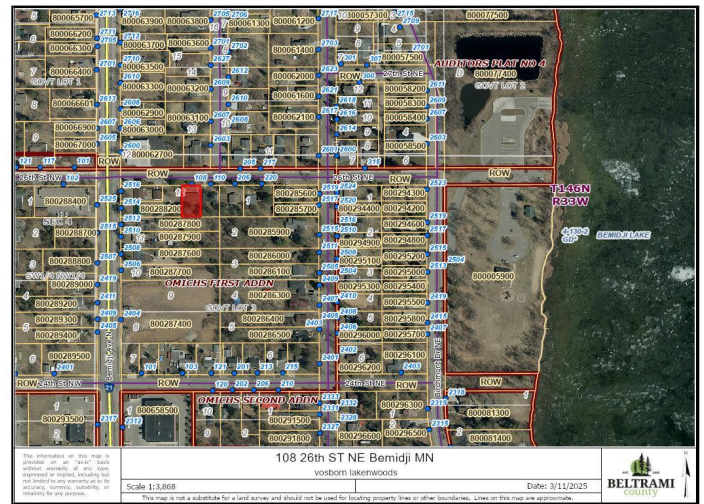


website: [www.AffinityRealEstate.com](http://www.AffinityRealEstate.com) | email: [info@affinityrealestate.com](mailto:info@affinityrealestate.com) | office: 218-237-3333 | fax: 218-237-3377

**Affinity**  
REAL ESTATE INC

**\$225,000**  
MLS 6683172 Residential  
108 26th Street  
Bemidji MN 56601





website: [www.AffinityRealEstate.com](http://www.AffinityRealEstate.com) | email: [info@affinityrealestate.com](mailto:info@affinityrealestate.com) | office: 218-237-3333 | fax: 218-237-3377



**\$225,000**  
 MLS 6683172 Residential  
 108 26th Street  
 Bemidji MN 56601