



MLS 6683209 Residential

\$499,000

3,052 sq ft
4 bedrooms
3 baths

1889 Aspen Drive
Detroit Lakes MN 56501

Status: Pending

Description:

TIMBER CREEK: Stunningly maintained 4 bed/3 bath home in a coveted Detroit Lakes neighborhood. The home is meticulously cared for and is in supremely great condition. You're bound to fall in love with the feel and flow of the home. The main floor consists of an open kitchen/dining/living room concept, a master bedroom with a master bath, two additional bedrooms, laundry, a guest bathroom, a sliding glass door to the deck and large backyard (with working sprinkler system), and access to the 3 stall garage.

The basement area welcomes group entertainment around the custom built bar/table. You'll also find a guest bath, a fourth bedroom, an amazing storage space, and the utility room.

Nearly all of the furnishings and personal items can be included and/or negotiable with the sale of this home. An added bonus; the remaining 10K in Special Assessments have recently been paid off in full!

Come and check out everything this property and the Timber Creek neighborhood have to offer!


Additional Details:

Year Built	2012
Lot Acres	0.53
Lot Dimensions	200x115
Garage Stalls	3
School District	22
Taxes	\$3,720
Taxes with Assessments	\$3,720
Tax Year	2024

Additional Features:

Basement: Finished, Full **Fuel:** Natural Gas **Garage:** 3 **Heat:** Forced Air **Sewer:** City Sewer/Connected **Water:** City Water/Connected **Air Conditioning:** Central Air

Driving Directions:

 Listed By:
Counselor Realty Detroit Lakes

Affinity Real Estate Inc. participates in the Regional Multiple Listing Service of Minnesota, Inc Broker Reciprocity (sm) program, allowing us to display other broker's listings on our website. All properties are subject to prior sale, change or withdrawal.



Call Affinity Real Estate
218-237-3333
info@affinityrealestate.com



Affinity Real Estate - 600 Park Avenue South - Park Rapids MN 56470



website: www.AffinityRealEstate.com | email: info@affinityrealestate.com | office: 218-237-3333 | fax: 218-237-3377

Affinity
REAL ESTATE INC

\$499,000
MLS 6683209 Residential
1889 Aspen Drive
Detroit Lakes MN 56501



website: www.AffinityRealEstate.com | email: info@affinityrealestate.com | office: 218-237-3333 | fax:218-237-3377

Affinity
REAL ESTATE INC

\$499,000
MLS 6683209 Residential
1889 Aspen Drive
Detroit Lakes MN 56501



website: www.AffinityRealEstate.com | email: info@affinityrealestate.com | office: 218-237-3333 | fax: 218-237-3377

Affinity
REAL ESTATE INC

\$499,000
MLS 6683209 Residential
1889 Aspen Drive
Detroit Lakes MN 56501



website: www.AffinityRealEstate.com | email: info@affinityrealestate.com | office: 218-237-3333 | fax:218-237-3377



\$499,000
MLS 6683209 Residential
1889 Aspen Drive
Detroit Lakes MN 56501



website: www.AffinityRealEstate.com | email: info@affinityrealestate.com | office: 218-237-3333 | fax: 218-237-3377

Affinity
REAL ESTATE INC

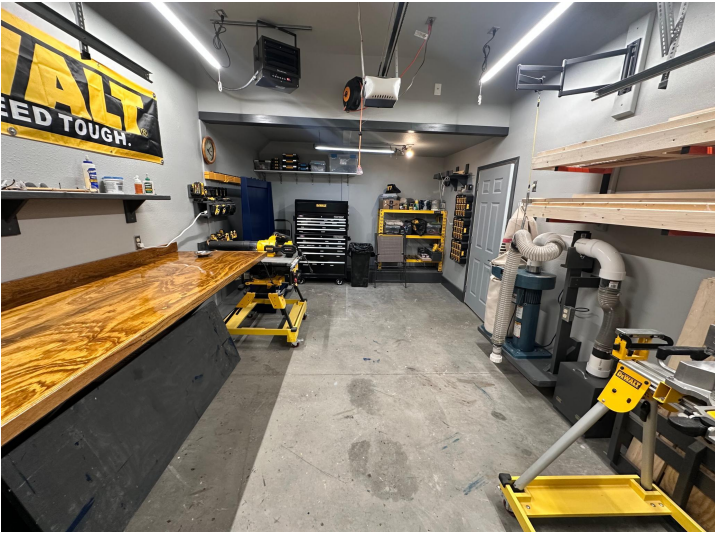
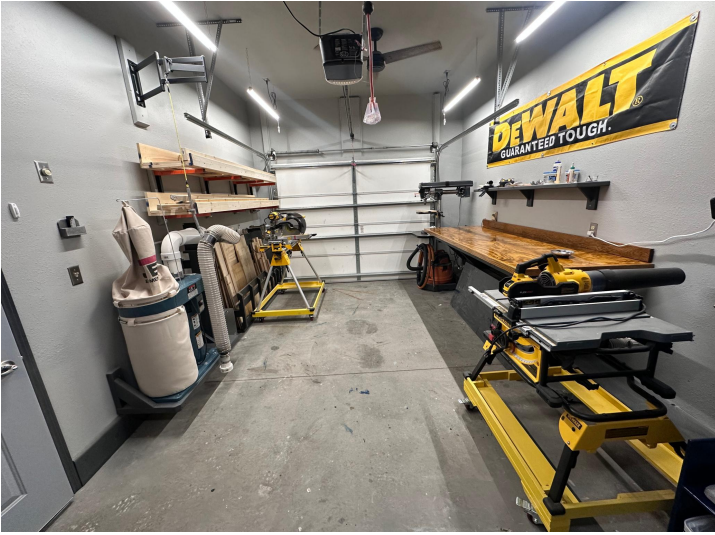
\$499,000
MLS 6683209 Residential
1889 Aspen Drive
Detroit Lakes MN 56501



website: www.AffinityRealEstate.com | email: info@affinityrealestate.com | office: 218-237-3333 | fax:218-237-3377

Affinity
REAL ESTATE INC

\$499,000
MLS 6683209 Residential
1889 Aspen Drive
Detroit Lakes MN 56501



website: www.AffinityRealEstate.com | email: info@affinityrealestate.com | office: 218-237-3333 | fax: 218-237-3377

Affinity
REAL ESTATE INC

\$499,000
MLS 6683209 Residential
1889 Aspen Drive
Detroit Lakes MN 56501



website: www.AffinityRealEstate.com | email: info@affinityrealestate.com | office: 218-237-3333 | fax:218-237-3377



\$499,000
MLS 6683209 Residential
1889 Aspen Drive
Detroit Lakes MN 56501