



MLS 6683589 Residential

**\$179,900**

1,024 sq ft  
2 bedrooms  
1 baths

54389 Co Hwy 142  
New York Mills MN 56567

Status: Pending

**Description:**

15 Acres of Privacy & Potential – Just Minutes from New York Mills! Discover the Beauty and Seclusion of this Wooded 15-Acre Property, where Mature Trees provide a Peaceful, Private setting surrounded by Nature.

Just south of New York Mills—an area known for its Thriving Wildlife & Impressive Bucks—this land is a Dream for Outdoor Enthusiasts, Hunters, or anyone seeking a Rural Escape.

The Farmhouse offers over 2,000 SqFt across 1.5 Levels, presenting an Opportunity for those with Vision and a passion for Restoration. While the home needs work, it holds the Potential to be truly Charming with the right touch.

Additional features include the Detached Garage/Shop & Storage Building, both providing Useful Space for Projects or Storage.

Opportunities like this are hard to find—15 Wooded Acres, a Charming Fixer-Upper, and Space to Create Your Vision, all at a price that makes it Achievable. If you've been searching for a Rural Escape, this might be it!

**Additional Details:**

Year Built	1900
Lot Acres	15
Lot Dimensions	660 x 990
Garage Stalls	1
School District	553
Taxes	\$1,000
Taxes with Assessments	\$1,080
Tax Year	2024

**Additional Features:**

**Fuel:** Electric, Propane **Heat:** Space Heater, Wood Stove

**Driving Directions:**

Head South East on E Centennial 84 Dr & turn left onto Co Hwy 142. After 3 Miles, turn left onto Co Hwy 142. The property will be on the left side.

Affinity Real Estate Inc. participates in the Regional Multiple Listing Service of Minnesota, Inc Broker Reciprocity (sm) program, allowing us to display other broker's listings on our website. All properties are subject to prior sale, change or withdrawal.



**Call Affinity Real Estate**

**218-237-3333**

**info@affinityrealestate.com**



**Affinity Real Estate - 600 Park Avenue South - Park Rapids MN 56470**



website: [www.AffinityRealEstate.com](http://www.AffinityRealEstate.com) | email: [info@affinityrealestate.com](mailto:info@affinityrealestate.com) | office: 218-237-3333 | fax:218-237-3377

**Affinity**  
REAL ESTATE INC

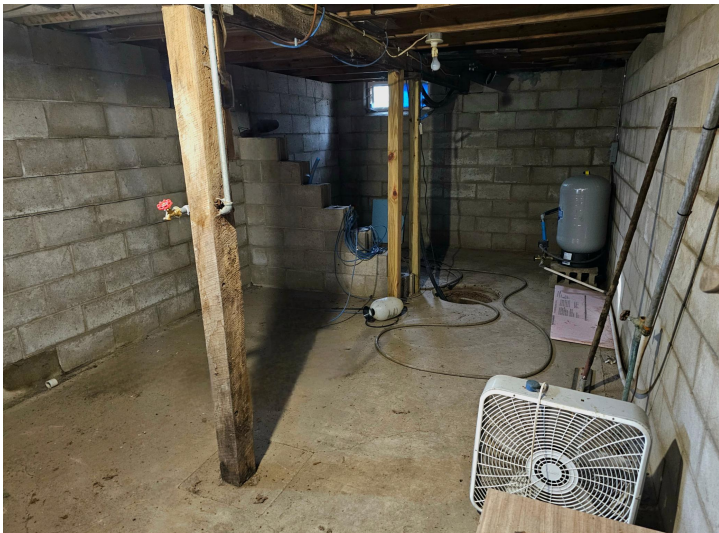
**\$179,900**  
MLS 6683589 Residential  
54389 Co Hwy 142  
New York Mills MN 56567



website: [www.AffinityRealEstate.com](http://www.AffinityRealEstate.com) | email: [info@affinityrealestate.com](mailto:info@affinityrealestate.com) | office: 218-237-3333 | fax: 218-237-3377

**Affinity**  
REAL ESTATE INC

**\$179,900**  
MLS 6683589 Residential  
54389 Co Hwy 142  
New York Mills MN 56567



website: [www.AffinityRealEstate.com](http://www.AffinityRealEstate.com) | email: [info@affinityrealestate.com](mailto:info@affinityrealestate.com) | office: 218-237-3333 | fax: 218-237-3377

**Affinity**  
REAL ESTATE INC

**\$179,900**  
MLS 6683589 Residential  
54389 Co Hwy 142  
New York Mills MN 56567



website: [www.AffinityRealEstate.com](http://www.AffinityRealEstate.com) | email: [info@affinityrealestate.com](mailto:info@affinityrealestate.com) | office: 218-237-3333 | fax: 218-237-3377

**Affinity**  
REAL ESTATE INC

**\$179,900**  
MLS 6683589 Residential  
54389 Co Hwy 142  
New York Mills MN 56567



website: [www.AffinityRealEstate.com](http://www.AffinityRealEstate.com) | email: [info@affinityrealestate.com](mailto:info@affinityrealestate.com) | office: 218-237-3333 | fax:218-237-3377

**Affinity**  
REAL ESTATE INC

**\$179,900**  
MLS 6683589 Residential  
54389 Co Hwy 142  
New York Mills MN 56567



website: [www.AffinityRealEstate.com](http://www.AffinityRealEstate.com) | email: [info@affinityrealestate.com](mailto:info@affinityrealestate.com) | office: 218-237-3333 | fax:218-237-3377



**\$179,900**  
MLS 6683589 Residential  
54389 Co Hwy 142  
New York Mills MN 56567