



MLS 6683635 Residential

**\$749,900**

2,751 sq ft  
4 bedrooms  
4 baths

1555 Redstone Trail  
Pequot Lakes MN 56472

Status: Hold

#### Description:

A true must-see set on 2.5 private acres in the Pequot Lakes School District, this 4-bedroom home offers a perfect blend of modern design and up-north tranquility—just minutes from town. Thoughtfully designed with natural light flooding every space, this home creates a calming environment that feels like a retreat. With 2,751 sqft, the open-concept layout features high-end finishes, a chef's kitchen with a premium stove/range & a walk-in pantry, as well as a cozy fireplace. The primary suite is entirely separated from the rest of the home so is a true escape with a spa-like ensuite. Designed for work, play, and relaxation, this home also includes a dedicated office, home gym, and an entertainment room with a wet bar. Both practical and convenient, this home is complete with 2 full baths, 2 half baths, a 2.5-car garage, and a dog wash station.

#### Additional Details:

Year Built	2021
Lot Acres	2.55
Lot Dimensions	163x400x373x482
Garage Stalls	3
School District	186
Taxes	\$3,180
Taxes with Assessments	\$3,246
Tax Year	2024

#### Additional Features:

**Fuel:** Propane **Heat:** Forced Air, Fireplace(s)

#### Driving Directions:

From Nisswa, north on 371 to west (left) on County Rd 168, go 3.1 miles to left on 17th Ave. SW, go 1/2 mile to left into The Homes at Redstone, follow Redstone Trail to cul-de-sac and sign on right.



Listed By:  
Woods to Water Real Estate

Affinity Real Estate Inc. participates in the Regional Multiple Listing Service of Minnesota, Inc Broker Reciprocity (sm) program, allowing us to display other broker's listings on our website. All properties are subject to prior sale, change or withdrawal.



**Call Affinity Real Estate**

**218-237-3333**

**info@affinityrealestate.com**



**Affinity Real Estate - 600 Park Avenue South - Park Rapids MN 56470**





website: [www.AffinityRealEstate.com](http://www.AffinityRealEstate.com) | email: [info@affinityrealestate.com](mailto:info@affinityrealestate.com) | office: 218-237-3333 | fax: 218-237-3377



**\$749,900**  
 MLS 6683635 Residential  
 1555 Redstone Trail  
 Pequot Lakes MN 56472



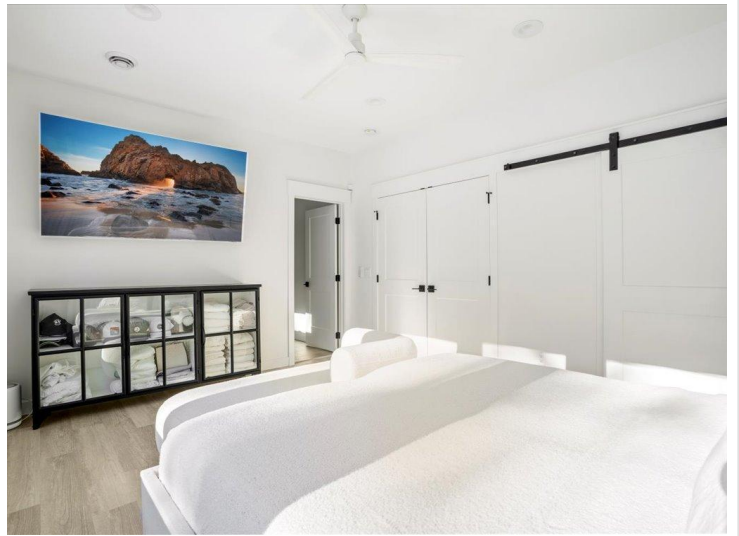


website: [www.AffinityRealEstate.com](http://www.AffinityRealEstate.com) | email: [info@affinityrealestate.com](mailto:info@affinityrealestate.com) | office: 218-237-3333 | fax: 218-237-3377

**Affinity**  
REAL ESTATE INC

**\$749,900**  
MLS 6683635 Residential  
1555 Redstone Trail  
Pequot Lakes MN 56472



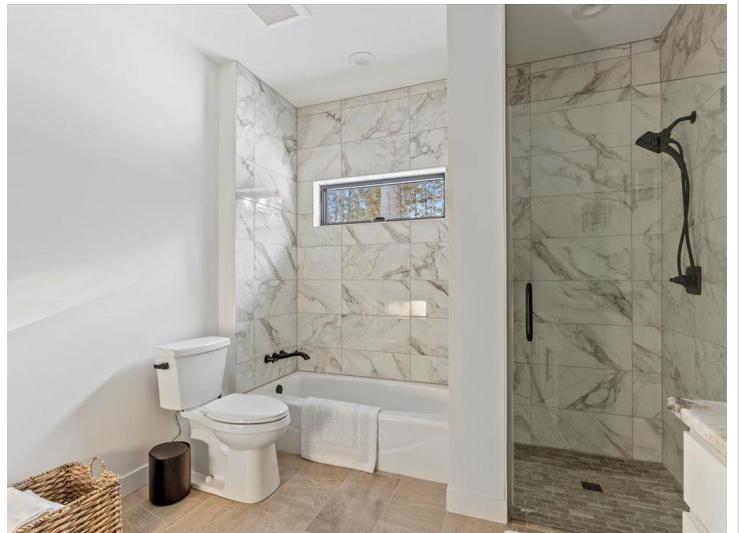
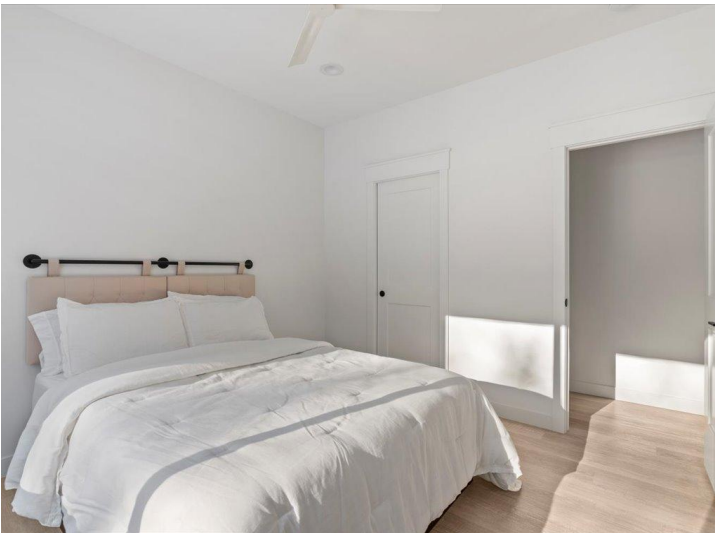
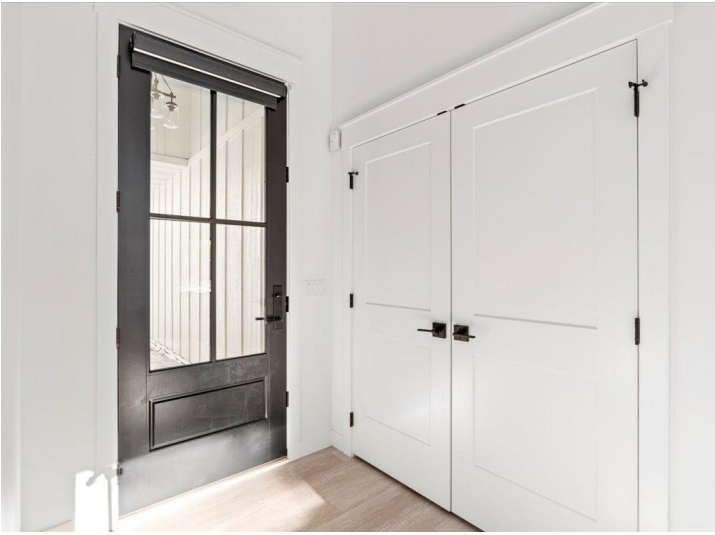


website: [www.AffinityRealEstate.com](http://www.AffinityRealEstate.com) | email: [info@affinityrealestate.com](mailto:info@affinityrealestate.com) | office: 218-237-3333 | fax: 218-237-3377

**Affinity**  
REAL ESTATE INC

**\$749,900**  
MLS 6683635 Residential  
1555 Redstone Trail  
Pequot Lakes MN 56472

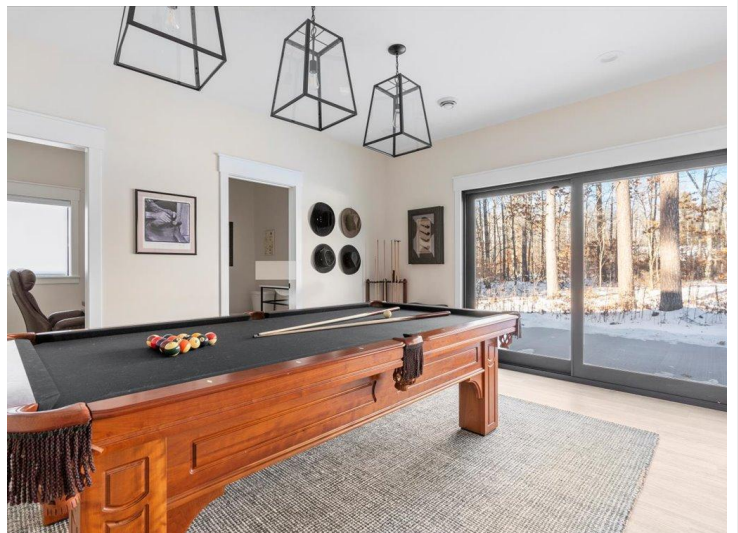
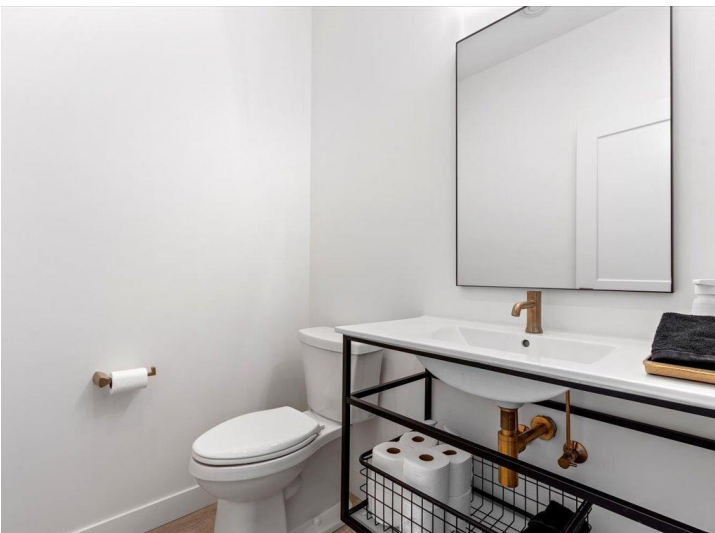
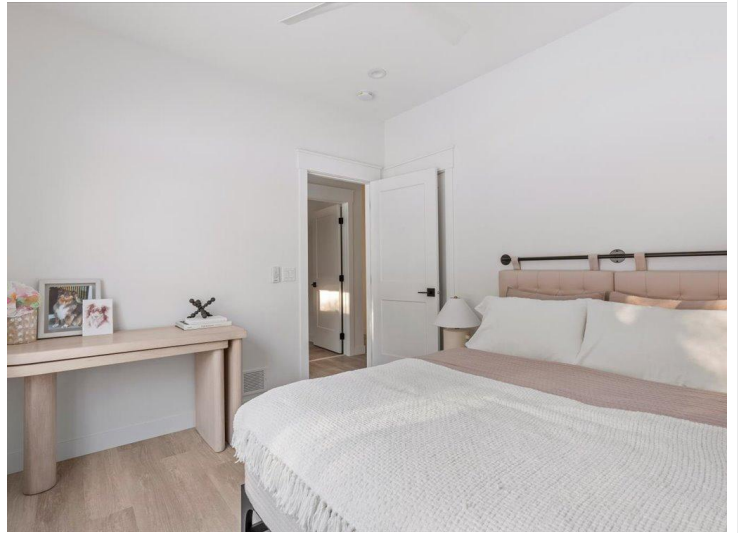




website: [www.AffinityRealEstate.com](http://www.AffinityRealEstate.com) | email: [info@affinityrealestate.com](mailto:info@affinityrealestate.com) | office: 218-237-3333 | fax: 218-237-3377



**\$749,900**  
 MLS 6683635 Residential  
 1555 Redstone Trail  
 Pequot Lakes MN 56472

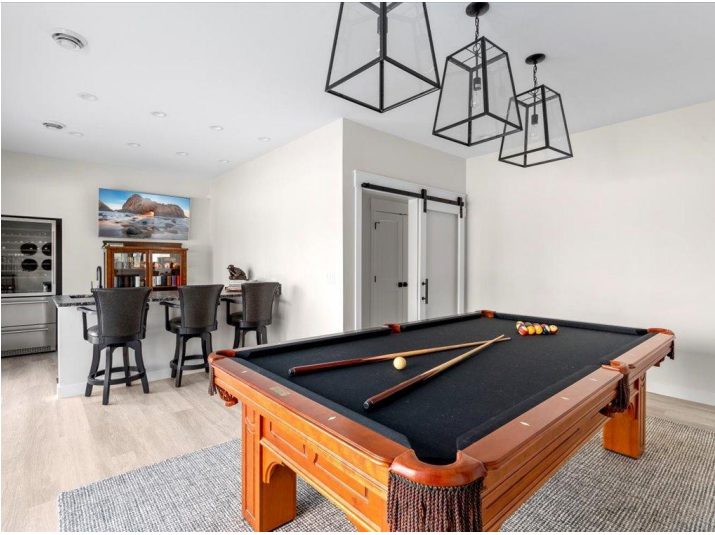


website: [www.AffinityRealEstate.com](http://www.AffinityRealEstate.com) | email: [info@affinityrealestate.com](mailto:info@affinityrealestate.com) | office: 218-237-3333 | fax: 218-237-3377



**\$749,900**  
MLS 6683635 Residential  
1555 Redstone Trail  
Pequot Lakes MN 56472



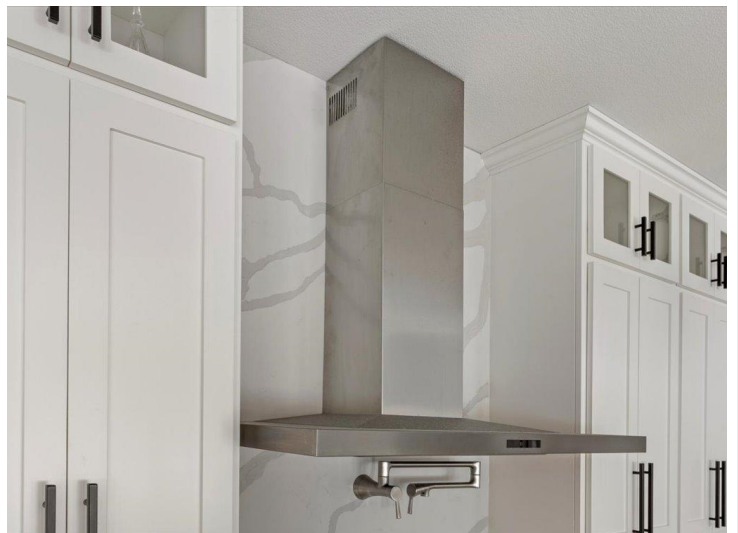


website: [www.AffinityRealEstate.com](http://www.AffinityRealEstate.com) | email: [info@affinityrealestate.com](mailto:info@affinityrealestate.com) | office: 218-237-3333 | fax: 218-237-3377



**\$749,900**  
 MLS 6683635 Residential  
 1555 Redstone Trail  
 Pequot Lakes MN 56472





website: [www.AffinityRealEstate.com](http://www.AffinityRealEstate.com) | email: [info@affinityrealestate.com](mailto:info@affinityrealestate.com) | office: 218-237-3333 | fax: 218-237-3377



**\$749,900**  
MLS 6683635 Residential  
1555 Redstone Trail  
Pequot Lakes MN 56472





website: [www.AffinityRealEstate.com](http://www.AffinityRealEstate.com) | email: [info@affinityrealestate.com](mailto:info@affinityrealestate.com) | office: 218-237-3333 | fax: 218-237-3377



**\$749,900**  
 MLS 6683635 Residential  
 1555 Redstone Trail  
 Pequot Lakes MN 56472





website: [www.AffinityRealEstate.com](http://www.AffinityRealEstate.com) | email: [info@affinityrealestate.com](mailto:info@affinityrealestate.com) | office: 218-237-3333 | fax: 218-237-3377



**\$749,900**  
 MLS 6683635 Residential  
 1555 Redstone Trail  
 Pequot Lakes MN 56472





website: [www.AffinityRealEstate.com](http://www.AffinityRealEstate.com) | email: [info@affinityrealestate.com](mailto:info@affinityrealestate.com) | office: 218-237-3333 | fax:218-237-3377



**\$749,900**  
MLS 6683635 Residential  
1555 Redstone Trail  
Pequot Lakes MN 56472