



MLS 6683862 Land

\$23,000

0.8 Acres
Raw Land

TBD Ski Chalet Drive
Breezy Point MN 56472

Status: Active

Description:

Grab your contractor and plans and build your next home on this conveniently located, wooded lot. Located a short distance from the CRMC Breezy Clinic, Breezy Ice Arena, NorthStar Restaurant and Eagle View Elementary School all on a paved road!

Additional Details:

Lot Acres	0.8
Lot Dimensions	148'x228'
School District	186
Taxes	\$144
Taxes with Assessments	\$144
Tax Year	2024

Additional Features:

Driving Directions:

Head North on Ranchette. Turn right on Ski Chalet, lot is first lot on left after first home



Listed By:
Woods to Water Real Estate

Affinity Real Estate Inc. participates in the Regional Multiple Listing Service of Minnesota, Inc Broker Reciprocity (sm) program, allowing us to display other broker's listings on our website. All properties are subject to prior sale, change or withdrawal.



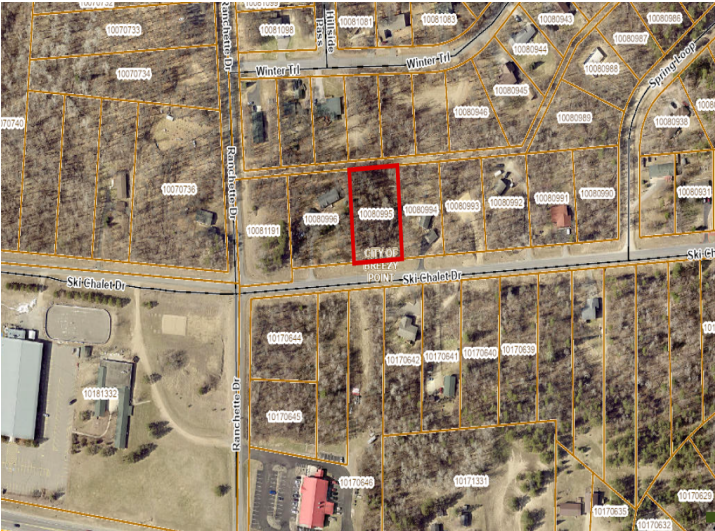
Call Affinity Real Estate

218-237-3333

info@affinityrealestate.com



Affinity Real Estate - 600 Park Avenue South - Park Rapids MN 56470



website: www.AffinityRealEstate.com | email: info@affinityrealestate.com | office: 218-237-3333 | fax: 218-237-3377



\$23,000
 MLS 6683862 Land
 TBD Ski Chalet Drive
 Breezy Point MN 56472