



MLS 6683908 Lake Land

\$230,000

Description:

As the seasons change and warmer days arrive, now is the perfect time to claim your own piece of paradise! This incredible opportunity includes 5 lots—1 beautiful lakefront lot and 4 versatile back lots—offering endless possibilities for relaxation, recreation, or future development. The lakefront lot is ready for summer fun with a camper, dock, a cozy patio, and a fire pit where you can gather for s'mores and stories under the stars. It also features a sand point well (requiring a pump) and electrical service, making it easy to start enjoying lake life immediately. The 4 back lots are equally impressive, with a septic system designed for a 4-bedroom home, power already in place, and both campers are included—perfect for weekend getaways while planning your dream retreat. Imagine waking up to the sound of loons on the water, sipping coffee as the sun rises, enjoying the crackling fire as the sun sets over the lake, and spending long summer days boating, fishing, and making memories. Whether you're looking for a seasonal escape or a future home site, these 5 lots provide the perfect setting for lake living. Don't miss out on this rare chance to own a prime lake property with so much potential! Call today!

Additional Details:

Lot Acres	1.4
Lot Dimensions	irr
School District	549
Taxes	\$439
Taxes with Assessments	\$742
Tax Year	2024

Additional Features:

Driving Directions:



Listed By:
Century 21 FM Realty

Affinity Real Estate Inc. participates in the Regional Multiple Listing Service of Minnesota, Inc Broker Reciprocity (sm) program, allowing us to display other broker's listings on our website. All properties are subject to prior sale, change or withdrawal.



Call Affinity Real Estate

218-237-3333

info@affinityrealestate.com



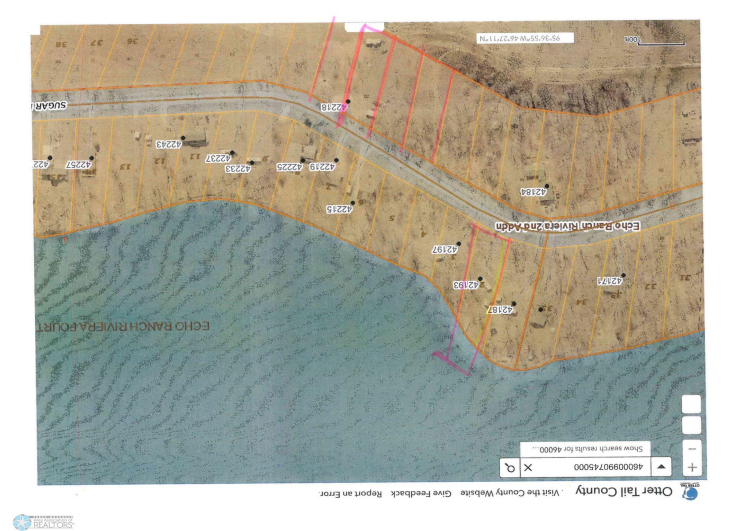
Affinity Real Estate - 600 Park Avenue South - Park Rapids MN 56470



website: www.AffinityRealEstate.com | email: info@affinityrealestate.com | office: 218-237-3333 | fax:218-237-3377



\$230,000
MLS 6683908 Lake Land
42193 Sugar Maple Drive
Ottertail MN 56571



website: www.AffinityRealEstate.com | email: info@affinityrealestate.com | office: 218-237-3333 | fax:218-237-3377



\$230,000
 MLS 6683908 Lake Land
 42193 Sugar Maple Drive
 Ottertail MN 56571