



MLS 6684010 Lake Home

**\$289,500**

700 sq ft  
1 bedrooms  
1 baths

17135 Dunlin Road  
Burtrum MN 56318

Waterfront: Long Lake  
(Burnhamville Twp.)

Status: Pending

#### Description:

This property is located on the beautiful Long Lake in Burnhamville Township. Originally built as a steel Quonset building in 1996, it was later converted into a year-round living space, complete with a lakeside screened porch. The living area is well-designed, clean, and inviting.

This is a rare opportunity to own a large, west-facing lakefront lot in Central Minnesota. The property is about 45 minutes from both St. Cloud and Alexandria, and just 90 minutes from the Twin Cities metro area—making it a convenient getaway spot.

The wooded lot spans 2.34 acres, offering plenty of space for potential future development, such as building a cabin or home. It also features a private well and sewer system. The lakeshore is easily accessible by vehicle, with an access road that leads right down to the ordinary high-water mark, offering a surprisingly level area at the lakeside for enjoying the water.

This is the perfect place to create lasting memories on a beautiful, clean lake.

#### Additional Details:

Year Built	1996
Lot Acres	2.34
Lot Dimensions	See Overlay MaP
Garage Stalls	2
School District	486
Taxes	\$1,768
Taxes with Assessments	\$1,768
Tax Year	2024

#### Additional Features:

**Basement:** Slab **Fuel:** Natural Gas **Garage:** 2 **Heat:** Forced Air **Sewer:** Mound Septic **Water:** Private, Well **Air Conditioning:** Central Air

#### Driving Directions:

North out of Grey Eagle follow County 102 north to stop sign. Go right on County 13, left on Dunlin Road to property on left.



Listed By:  
Central MN Realty LLC

Affinity Real Estate Inc. participates in the Regional Multiple Listing Service of Minnesota, Inc Broker Reciprocity (sm) program, allowing us to display other broker's listings on our website. All properties are subject to prior sale, change or withdrawal.



**Call Affinity Real Estate**

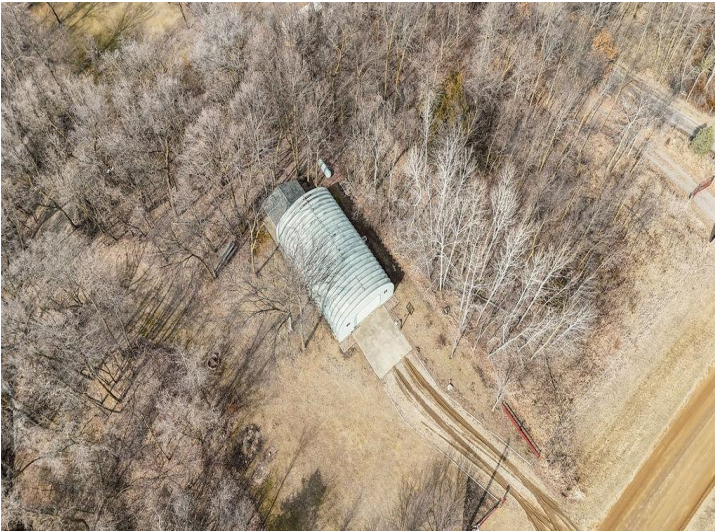
**218-237-3333**

**info@affinityrealestate.com**



**Affinity Real Estate - 600 Park Avenue South - Park Rapids MN 56470**





website: [www.AffinityRealEstate.com](http://www.AffinityRealEstate.com) | email: [info@affinityrealestate.com](mailto:info@affinityrealestate.com) | office: 218-237-3333 | fax: 218-237-3377

**Affinity**  
REAL ESTATE INC

**\$289,500**  
MLS 6684010 Lake Home  
17135 Dunlin Road  
Burtrum MN 56318





website: [www.AffinityRealEstate.com](http://www.AffinityRealEstate.com) | email: [info@affinityrealestate.com](mailto:info@affinityrealestate.com) | office: 218-237-3333 | fax: 218-237-3377



**\$289,500**  
MLS 6684010 Lake Home  
17135 Dunlin Road  
Burtrum MN 56318





website: [www.AffinityRealEstate.com](http://www.AffinityRealEstate.com) | email: [info@affinityrealestate.com](mailto:info@affinityrealestate.com) | office: 218-237-3333 | fax: 218-237-3377

**Affinity**  
REAL ESTATE INC

**\$289,500**  
MLS 6684010 Lake Home  
17135 Dunlin Road  
Burtrum MN 56318





website: [www.AffinityRealEstate.com](http://www.AffinityRealEstate.com) | email: [info@affinityrealestate.com](mailto:info@affinityrealestate.com) | office: 218-237-3333 | fax: 218-237-3377



**\$289,500**  
 MLS 6684010 Lake Home  
 17135 Dunlin Road  
 Burtrum MN 56318





website: [www.AffinityRealEstate.com](http://www.AffinityRealEstate.com) | email: [info@affinityrealestate.com](mailto:info@affinityrealestate.com) | office: 218-237-3333 | fax: 218-237-3377



**\$289,500**  
 MLS 6684010 Lake Home  
 17135 Dunlin Road  
 Burtrum MN 56318





website: [www.AffinityRealEstate.com](http://www.AffinityRealEstate.com) | email: [info@affinityrealestate.com](mailto:info@affinityrealestate.com) | office: 218-237-3333 | fax: 218-237-3377



**\$289,500**  
 MLS 6684010 Lake Home  
 17135 Dunlin Road  
 Burtrum MN 56318