

MLS 6684237 Lake Land

\$109,900



Description:

You just found a beauty! Lofted 2005 Dutch Park- big deck & an UP NORTH Minnesota Room w/fireplace, ceiling light/fan, AC, TV. Double sleeping loft in the park model & Living Room sofa makes into a king bed. Must see! Galley kitchen w/ lots of storage. A Wooded yard, with perennial garden, purple Syberian Iris & more! Yard & buildings configured so you have privacy all around! Storage shed. All furnishings negotiable! Whitebirch Camping Cluster Resort boasts many amenities: playgrounds, pools, pickle ball, community room with pool table & electronic games, frisbee golf, etc. W/golf cart path between CC1 & CC2 to enjoy the amenities of both areas. Only 5 min from Breezy Point Resort = Beach, Dock (space reserved for Whitebirch Campgrounds w/ 7days on, 7 off! Restaurants, etc.

Additional Details:

Lot Acres	0.13
Lot Dimensions	86x85x94x46
School District	186
Taxes	\$578
Taxes with Assessments	\$578
Tax Year	2024

Additional Features:

Driving Directions:

Co Rd 11 to Ranchette, So 1/4 mile to Gate/Whitebirch Way. curves to left follow So thru the park to Plumwood. Rt. to 5th lot on Left.



Listed By:
Dane Arthur Real Estate Agency-Crosslake

Affinity Real Estate Inc. participates in the Regional Multiple Listing Service of Minnesota, Inc Broker Reciprocity (sm) program, allowing us to display other broker's listings on our website. All properties are subject to prior sale, change or withdrawal.



Call Affinity Real Estate

218-237-3333

info@affinityrealestate.com



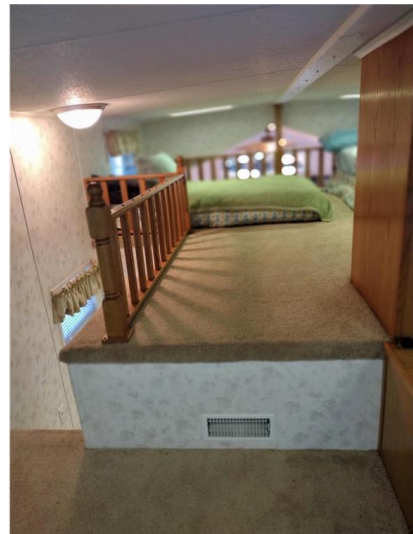
Affinity Real Estate - 600 Park Avenue South - Park Rapids MN 56470



website: www.AffinityRealEstate.com | email: info@affinityrealestate.com | office: 218-237-3333 | fax:218-237-3377

Affinity
REAL ESTATE INC

\$109,900
MLS 6684237 Lake Land
30461 Plumwood Trail
Pequot Lakes MN 56472



website: www.AffinityRealEstate.com | email: info@affinityrealestate.com | office: 218-237-3333 | fax:218-237-3377



\$109,900
MLS 6684237 Lake Land
30461 Plumwood Trail
Pequot Lakes MN 56472



website: www.AffinityRealEstate.com | email: info@affinityrealestate.com | office: 218-237-3333 | fax: 218-237-3377



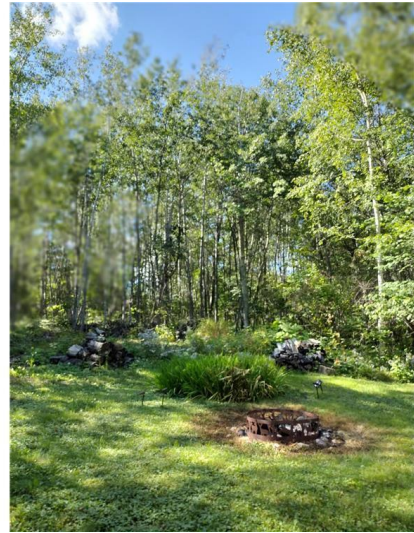
\$109,900
MLS 6684237 Lake Land
30461 Plumwood Trail
Pequot Lakes MN 56472



website: www.AffinityRealEstate.com | email: info@affinityrealestate.com | office: 218-237-3333 | fax:218-237-3377



\$109,900
MLS 6684237 Lake Land
30461 Plumwood Trail
Pequot Lakes MN 56472



website: www.AffinityRealEstate.com | email: info@affinityrealestate.com | office: 218-237-3333 | fax:218-237-3377



\$109,900
MLS 6684237 Lake Land
30461 Plumwood Trail
Pequot Lakes MN 56472