



MLS 6684317 Lake Home

\$1,200,000

1,584 sq ft
2 bedrooms
1 baths

5539 Nashway Road
Nisswa MN 56468

Waterfront: Round Lake
(18037300)

Status: Active

Description:

A rare opportunity awaits on the pristine, level shores of Round Lake in Nisswa, Minnesota. Unlike most properties on the lake, this 108-foot lot sits near one of Round Lake's few natural drop-offs, offering quick access to deeper water — no long dock required. The sandy shoreline is exceptionally level and perfect for lakeside living, swimming, or launching your boat just steps from your door.

Set on 1.09 acres with breathtaking south-facing views, this lot is part of the storied Gull Lake Chain and offers stunning sunrises and sunsets. The elevation is ideal for a custom-built retreat, or you can choose to remodel the existing mid-century modern cabin already on site. Whether you envision a peaceful getaway or a year-round lake home, this property provides both tranquility and adventure.

With recently improved access via Nashway Road and just minutes from downtown Nisswa's shops and dining, the location couldn't be more convenient. The seller has been verbally informed that a new build could match the neighboring setbacks, offering added design flexibility.

Additional Details:

Year Built	1990
Lot Acres	1.09
Lot Dimensions	440x106
Garage Stalls	3
School District	181
Taxes	\$6,806
Taxes with Assessments	\$6,806
Tax Year	2024

Additional Features:

Basement: Unfinished **Fuel:** Natural Gas, Propane **Garage:** 3 **Heat:** Fireplace(s) **Sewer:** Private Sewer **Water:** Drilled, Private **Air Conditioning:** None

Driving Directions:



Howard Nisswa, turn right onto Nashway Road, go south about 0.5 miles up the road the home will be on your right.

Affinity Real Estate Inc. participates in the Regional Multiple Listing Service of Minnesota, Inc Broker Reciprocity (sm) program, allowing us to display other broker's listings on our website. All properties are subject to prior sale, change or withdrawal.



Call Affinity Real Estate

218-237-3333

info@affinityrealestate.com



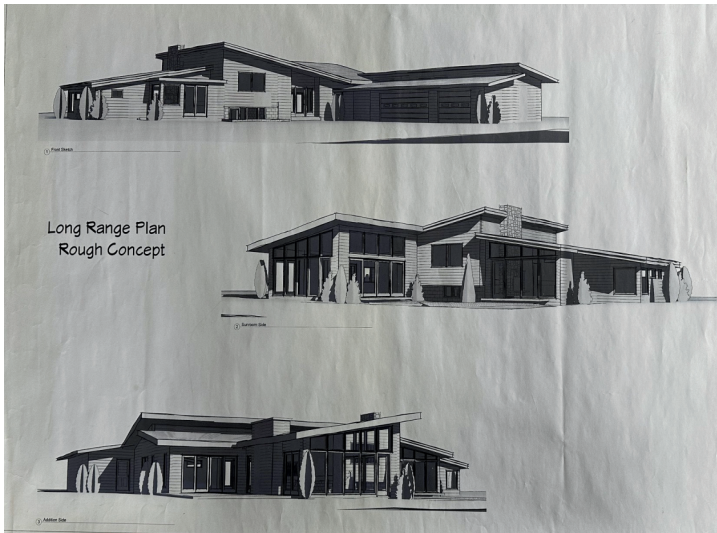
Affinity Real Estate - 600 Park Avenue South - Park Rapids MN 56470



website: www.AffinityRealEstate.com | email: info@affinityrealestate.com | office: 218-237-3333 | fax: 218-237-3377



\$1,200,000
 MLS 6684317 Lake Home
 5539 Nashway Road
 Nisswa MN 56468



website: www.AffinityRealEstate.com | email: info@affinityrealestate.com | office: 218-237-3333 | fax:218-237-3377



\$1,200,000

MLS 6684317 Lake Home
5539 Nashway Road
Nisswa MN 56468

website: www.AffinityRealEstate.com | email: info@affinityrealestate.com | office: 218-237-3333 | fax: 218-237-3377



\$1,200,000

MLS 6684317 Lake Home
5539 Nashway Road
Nisswa MN 56468

website: www.AffinityRealEstate.com | email: info@affinityrealestate.com | office: 218-237-3333 | fax:218-237-3377



\$1,200,000

MLS 6684317 Lake Home
5539 Nashway Road
Nisswa MN 56468

website: www.AffinityRealEstate.com | email: info@affinityrealestate.com | office: 218-237-3333 | fax:218-237-3377



\$1,200,000

MLS 6684317 Lake Home
5539 Nashway Road
Nisswa MN 56468

website: www.AffinityRealEstate.com | email: info@affinityrealestate.com | office: 218-237-3333 | fax:218-237-3377



\$1,200,000

MLS 6684317 Lake Home
5539 Nashway Road
Nisswa MN 56468

website: www.AffinityRealEstate.com | email: info@affinityrealestate.com | office: 218-237-3333 | fax:218-237-3377



\$1,200,000

MLS 6684317 Lake Home
5539 Nashway Road
Nisswa MN 56468

website: www.AffinityRealEstate.com | email: info@affinityrealestate.com | office: 218-237-3333 | fax:218-237-3377



\$1,200,000

MLS 6684317 Lake Home
5539 Nashway Road
Nisswa MN 56468

website: www.AffinityRealEstate.com | email: info@affinityrealestate.com | office: 218-237-3333 | fax:218-237-3377



\$1,200,000

MLS 6684317 Lake Home
5539 Nashway Road
Nisswa MN 56468

website: www.AffinityRealEstate.com | email: info@affinityrealestate.com | office: 218-237-3333 | fax:218-237-3377



\$1,200,000

MLS 6684317 Lake Home
5539 Nashway Road
Nisswa MN 56468