



MLS 6684555 Residential

\$349,900

1,792 sq ft
3 bedrooms
2 baths

13237 Norway Drive
Baxter MN 56425

Status: Active

Description:

Welcome to Norway Drive! This three bed-room, two bath-room home features a one acre lot, attached garage as well as a detached garage. You will love the vaulted ceilings with beams, updated bathroom and more. Possibility of adding a fourth bedroom in the lower level. Great location being on the edge of town yet close to all things Brainerd/Baxter. Schedule your showing today!

Additional Details:

Year Built	1977
Lot Acres	1.03
Lot Dimensions	150x300
Garage Stalls	4
School District	181
Taxes	\$3,323
Taxes with Assessments	\$3,348
Tax Year	2025

Additional Features:

Basement: Block, Egress Window(s), Full, Partially Finished **Fuel:** Natural Gas **Garage:** 4 **Heat:** Forced Air, Fireplace(s) **Sewer:** City Sewer/Connected **Water:** City Water/Connected **Air Conditioning:** Central Air

Driving Directions:

210 West of Baxter to a right on Meredith to left on Fairview to right on Norway Drive to house on left .



Listed By:
eXp Realty

Affinity Real Estate Inc. participates in the Regional Multiple Listing Service of Minnesota, Inc Broker Reciprocity (sm) program, allowing us to display other broker's listings on our website. All properties are subject to prior sale, change or withdrawal.



Call Affinity Real Estate

218-237-3333

info@affinityrealestate.com



Affinity Real Estate - 600 Park Avenue South - Park Rapids MN 56470



website: www.AffinityRealEstate.com | email: info@affinityrealestate.com | office: 218-237-3333 | fax: 218-237-3377

Affinity
REAL ESTATE INC

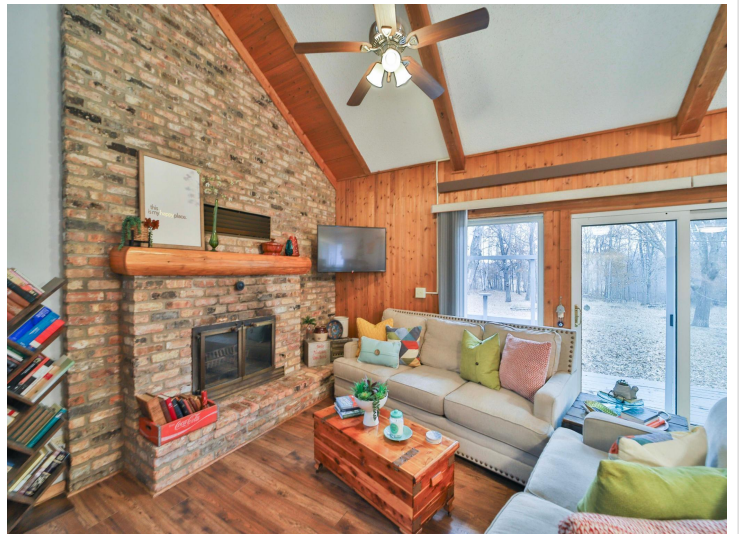
\$349,900
MLS 6684555 Residential
13237 Norway Drive
Baxter MN 56425



website: www.AffinityRealEstate.com | email: info@affinityrealestate.com | office: 218-237-3333 | fax:218-237-3377



\$349,900
MLS 6684555 Residential
13237 Norway Drive
Baxter MN 56425



website: www.AffinityRealEstate.com | email: info@affinityrealestate.com | office: 218-237-3333 | fax: 218-237-3377

Affinity
REAL ESTATE INC

\$349,900
MLS 6684555 Residential
13237 Norway Drive
Baxter MN 56425



website: www.AffinityRealEstate.com | email: info@affinityrealestate.com | office: 218-237-3333 | fax: 218-237-3377

Affinity
REAL ESTATE INC

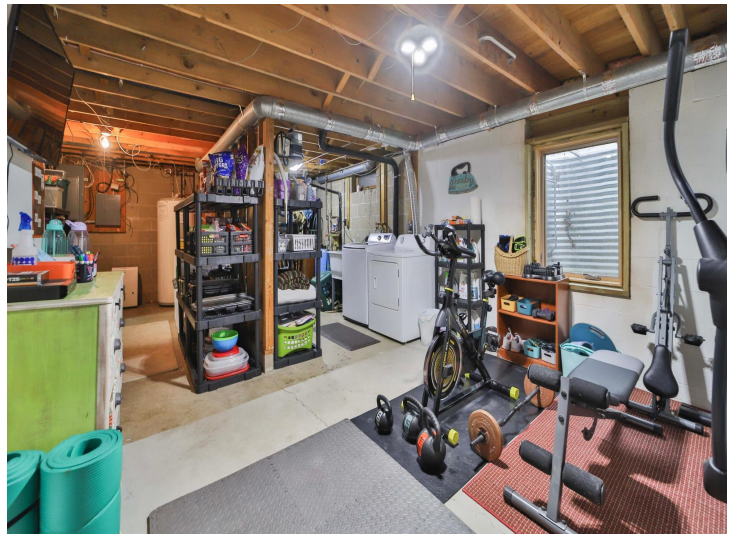
\$349,900
MLS 6684555 Residential
13237 Norway Drive
Baxter MN 56425



website: www.AffinityRealEstate.com | email: info@affinityrealestate.com | office: 218-237-3333 | fax:218-237-3377

Affinity
REAL ESTATE INC

\$349,900
MLS 6684555 Residential
13237 Norway Drive
Baxter MN 56425



website: www.AffinityRealEstate.com | email: info@affinityrealestate.com | office: 218-237-3333 | fax: 218-237-3377



\$349,900
MLS 6684555 Residential
13237 Norway Drive
Baxter MN 56425



website: www.AffinityRealEstate.com | email: info@affinityrealestate.com | office: 218-237-3333 | fax:218-237-3377

Affinity
REAL ESTATE INC

\$349,900
MLS 6684555 Residential
13237 Norway Drive
Baxter MN 56425



website: www.AffinityRealEstate.com | email: info@affinityrealestate.com | office: 218-237-3333 | fax:218-237-3377



\$349,900
MLS 6684555 Residential
13237 Norway Drive
Baxter MN 56425