



MLS 6685112 Commercial

\$587,500

407 Beltrami Avenue
Bemidji MN 56601

Status: Active

Description:

Exceptional investment opportunity in the heart of downtown Bemidji! This 7,000 sq. ft. commercial retail space on the main level, with additional warehouse space in the lower level, offers prime visibility and accessibility. Formerly a Goodwill location, the property comes with a lease in place until June 2027, with an optional buyout available. Just two blocks from Paul and Babe at the waterfront, this high-traffic location ensures strong tenant appeal and long-term value. Perfect for investors seeking a stable income-producing asset in a vibrant commercial district.

Additional Details:

Year Built	1954
Lot Acres	0.16
Lot Dimensions	140x50
School District	31
Taxes	\$8,470
Taxes with Assessments	\$8,470
Tax Year	2024

Additional Features:

Fuel: Natural Gas **Heat:** Forced Air **Sewer:** City Sewer/Connected **Water:** City Water/Connected

Driving Directions:

407 Beltrami Ave NW



Listed By:
Andy Williams Realty Group, LLC

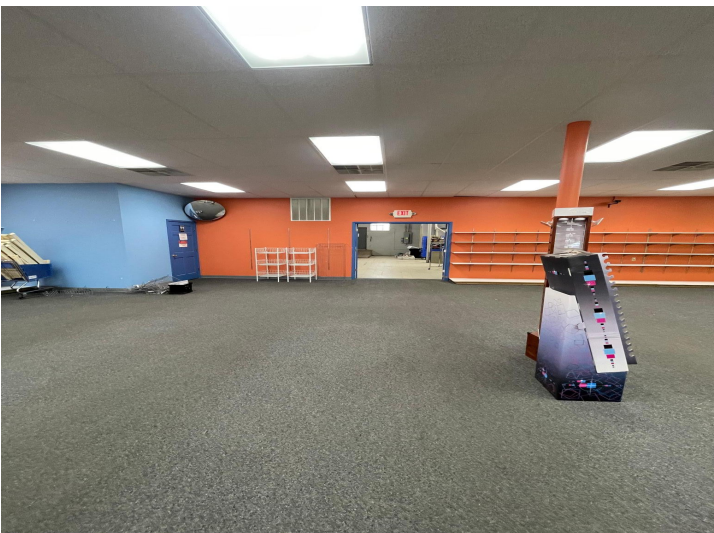
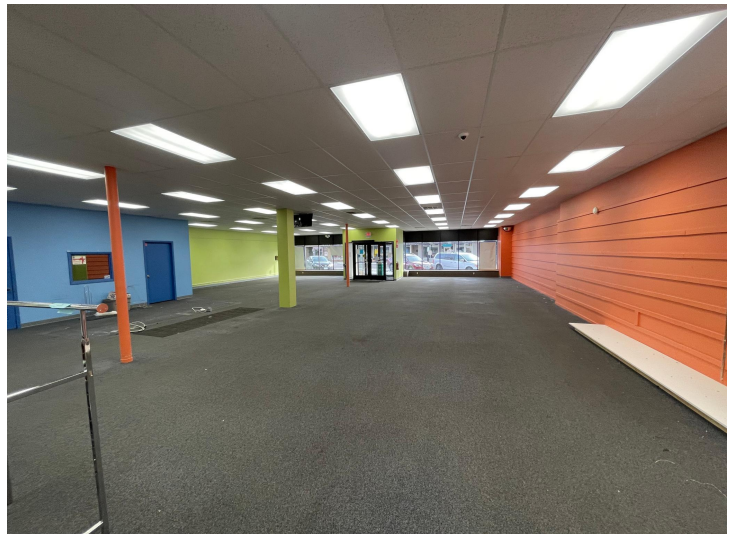
Affinity Real Estate Inc. participates in the Regional Multiple Listing Service of Minnesota, Inc Broker Reciprocity (sm) program, allowing us to display other broker's listings on our website. All properties are subject to prior sale, change or withdrawal.



Call Affinity Real Estate
218-237-3333
info@affinityrealestate.com



Affinity Real Estate - 600 Park Avenue South - Park Rapids MN 56470



website: www.AffinityRealEstate.com | email: info@affinityrealestate.com | office: 218-237-3333 | fax: 218-237-3377



\$587,500
 MLS 6685112 Commercial
 407 Beltrami Avenue
 Bemidji MN 56601



website: www.AffinityRealEstate.com | email: info@affinityrealestate.com | office: 218-237-3333 | fax:218-237-3377



\$587,500
MLS 6685112 Commercial
407 Beltrami Avenue
Bemidji MN 56601