



MLS 6685140 Land

\$85,000

10 Acres
Raw Land

37059 County Road 120
Frazee MN 56544

Status: Pending

Description:

10+/- acres to be surveyed on County Rd 120 East of Detroit Lakes and just North of Frazee. This area is loaded with wildlife and beautiful terrain and forest land. This tract of land offers a very nice building site with room for accessory buildings, gardens and hunting.

Additional Details:

Lot Acres	10
Lot Dimensions	330x1320
School District	23
Taxes	\$400
Taxes with Assessments	\$480
Tax Year	2024

Additional Features:

Driving Directions:

From Detroit Lakes, take US HWY 34 East 11 miles to Co Rd 120, turn right and drive 1.8 miles South to property.



Listed By:
Counselor Realty Detroit Lakes

Affinity Real Estate Inc. participates in the Regional Multiple Listing Service of Minnesota, Inc Broker Reciprocity (sm) program, allowing us to display other broker's listings on our website. All properties are subject to prior sale, change or withdrawal.



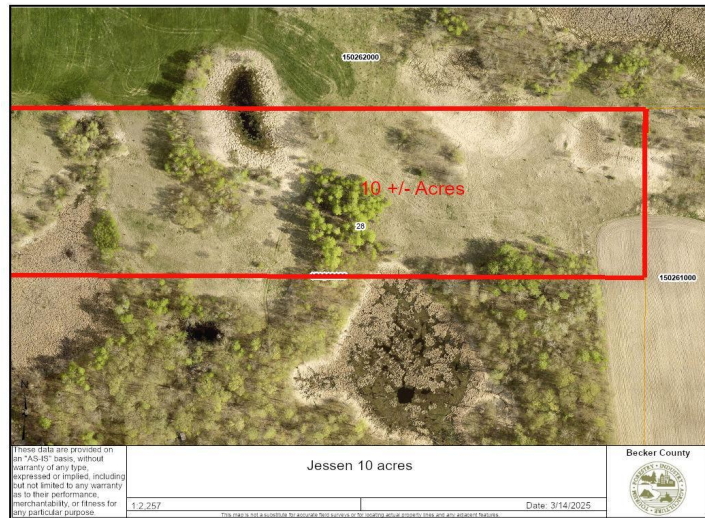
Call Affinity Real Estate

218-237-3333

info@affinityrealestate.com



Affinity Real Estate - 600 Park Avenue South - Park Rapids MN 56470



website: www.AffinityRealEstate.com | email: info@affinityrealestate.com | office: 218-237-3333 | fax: 218-237-3377



\$85,000
 MLS 6685140 Land
 37059 County Road 120
 Frazee MN 56544



website: www.AffinityRealEstate.com | email: info@affinityrealestate.com | office: 218-237-3333 | fax: 218-237-3377



\$85,000
MLS 6685140 Land
37059 County Road 120
Frazee MN 56544



website: www.AffinityRealEstate.com | email: info@affinityrealestate.com | office: 218-237-3333 | fax: 218-237-3377



\$85,000
MLS 6685140 Land
37059 County Road 120
Frazee MN 56544



website: www.AffinityRealEstate.com | email: info@affinityrealestate.com | office: 218-237-3333 | fax: 218-237-3377



\$85,000
 MLS 6685140 Land
 37059 County Road 120
 Frazee MN 56544