



MLS 6685997 Lake Home

\$574,900

960 sq ft
2 bedrooms
1 baths

6576 Point Drive
Pine River MN 56474

Waterfront: Whitefish Lake
(18031000)

Status: Pending

Description:

Nestled in the heart of the Northwoods, this cozy 2-bedroom cabin offers the perfect lakeside retreat on the highly desirable Whitefish Chain of Lakes. With 960 sq ft of thoughtfully designed space, this cabin combines rustic charm with modern comfort, making it an ideal getaway for family and friends.

Key Features include a Lakeside Deck, Custom Built-in Bunk Bed, Wood Fireplace and 3-Season Porch: Relax and unwind in the spacious 3-season porch, ideal for enjoying the outdoors even during cooler months.

With its serene setting, woodsy feel, and unbeatable location on the Whitefish Chain, this cabin is a true Northwoods treasure. Whether you're seeking a peaceful lakeside retreat or an adventurous weekend escape, this cabin offers the perfect blend of comfort and nature. Don't miss your chance to own a piece of paradise in this highly sought-after area! Currently an active short-term rental under professional management, you'll have the opportunity to assume the 2025 reservations and income. Use is an investment, for personal use or a combination of both and make owning your dream cabin more affordable by offsetting with short term rental revenue. Listed BELOW tax assessed value!

Additional Details:

Year Built	1983
Lot Acres	1.99
Lot Dimensions	398x266x277x254
School District	2174
Taxes	\$1,881
Taxes with Assessments	\$1,906
Tax Year	2025

Additional Features:

Fuel: Electric **Heat:** Baseboard, Wood Stove

Driving Directions:

From Crosslake, go north on County Road 66 then left on County Road 1. Go approximately 7.5 miles then turn left onto Long Farm Road. Turn left onto S. Point Drive and follow to fire#6576 on the left.



Listed By:
Woods to Water Real Estate

Affinity Real Estate Inc. participates in the Regional Multiple Listing Service of Minnesota, Inc Broker Reciprocity (sm) program, allowing us to display other broker's listings on our website. All properties are subject to prior sale, change or withdrawal.



Call Affinity Real Estate

218-237-3333

info@affinityrealestate.com



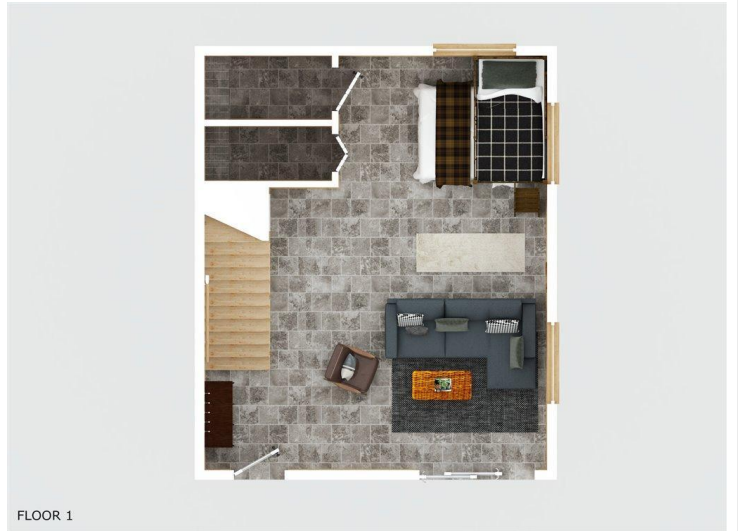
Affinity Real Estate - 600 Park Avenue South - Park Rapids MN 56470



website: www.AffinityRealEstate.com | email: info@affinityrealestate.com | office: 218-237-3333 | fax: 218-237-3377

Affinity
REAL ESTATE INC

\$574,900
MLS 6685997 Lake Home
6576 Point Drive
Pine River MN 56474

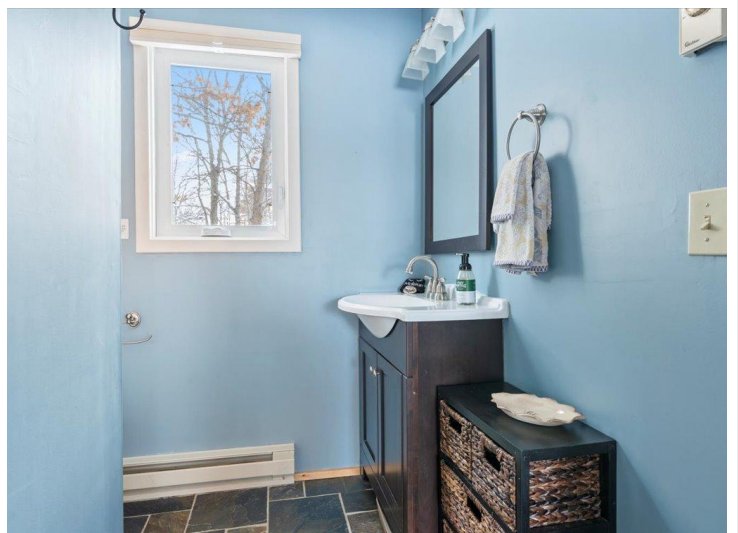
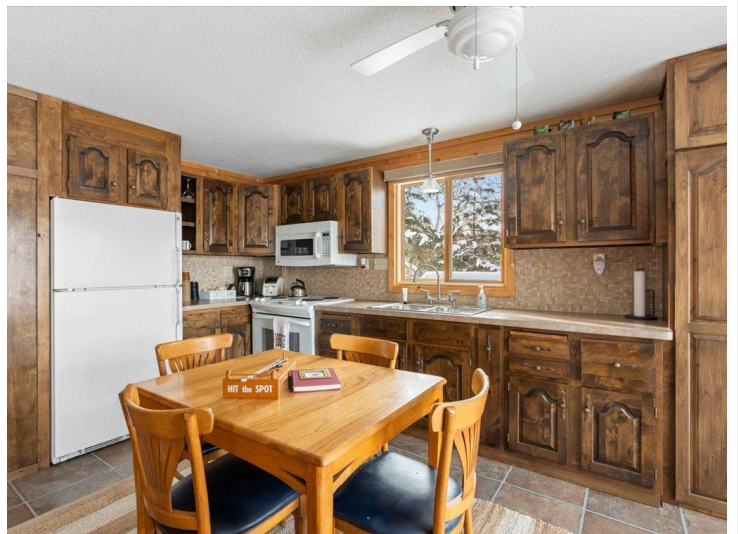


FLOOR 1

website: www.AffinityRealEstate.com | email: info@affinityrealestate.com | office: 218-237-3333 | fax: 218-237-3377



\$574,900
 MLS 6685997 Lake Home
 6576 Point Drive
 Pine River MN 56474



website: www.AffinityRealEstate.com | email: info@affinityrealestate.com | office: 218-237-3333 | fax: 218-237-3377

Affinity
REAL ESTATE INC

\$574,900

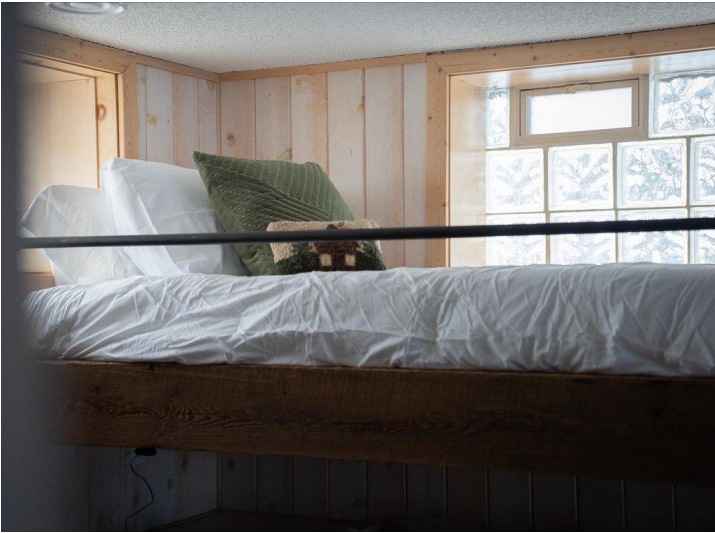
MLS 6685997 Lake Home
6576 Point Drive
Pine River MN 56474



website: www.AffinityRealEstate.com | email: info@affinityrealestate.com | office: 218-237-3333 | fax: 218-237-3377

Affinity
REAL ESTATE INC

\$574,900
MLS 6685997 Lake Home
6576 Point Drive
Pine River MN 56474



website: www.AffinityRealEstate.com | email: info@affinityrealestate.com | office: 218-237-3333 | fax: 218-237-3377

Affinity
REAL ESTATE INC

\$574,900
MLS 6685997 Lake Home
6576 Point Drive
Pine River MN 56474



website: www.AffinityRealEstate.com | email: info@affinityrealestate.com | office: 218-237-3333 | fax: 218-237-3377

Affinity
REAL ESTATE INC

\$574,900
MLS 6685997 Lake Home
6576 Point Drive
Pine River MN 56474