



MLS 6686027 Lake Home

\$515,000

2,160 sq ft
3 bedrooms
2 baths

12752 Eagle Ridge Drive
Baxter MN 56425

Waterfront: Mississippi River

Status: Pending

Description:

Incredible chance to own 140' on the Mississippi River, located minutes from downtown Brainerd and the Paul Bunyan Trail. This newly renovated all one level living home has an attached, heated 2 car garage, 3 bedrooms, 2 bathrooms and a 30x40 detached garage with a heated home office. Inside are new, granite kitchen countertops, updated bathroom and the primary bedroom has new carpet with a walk in closet and bathroom. Dining room features a patio door leading to a new deck, new, outdoor granite kitchen grille, new Hot Tub and sun awning as you enjoy your views of the Mississippi River. Fully landscaped yard, entertaining space outdoors as you enjoy life on the river. Grab your kayaks, canoes, fishing poles, your family and head to your new home on the river.

Additional Details:

Year Built	1992
Lot Acres	1.04
Lot Dimensions	126x268
Garage Stalls	4
School District	181
Taxes	\$3,729
Taxes with Assessments	\$3,754
Tax Year	2025

Additional Features:

Fuel: Natural Gas **Heat:** Forced Air, Fireplace(s)

Driving Directions:

From Brainerd Minnesota 56401

Follow S 5th St to E College Dr, (0.2 mi) Follow E College Dr and Highland Scenic Dr to Eagle Dr S/Eagle Ridge Dr S in Baxter (1.4 mi)

Continue on Eagle Dr S to your destination in Baxter (0.4 mi)

12752 Eagle Ridge Dr S



Listed By:
RE/MAX Results - Nisswa

Affinity Real Estate Inc. participates in the Regional Multiple Listing Service of Minnesota, Inc Broker Reciprocity (sm) program, allowing us to display other broker's listings on our website. All properties are subject to prior sale, change or withdrawal.



Call Affinity Real Estate

218-237-3333

info@affinityrealestate.com



Affinity Real Estate - 600 Park Avenue South - Park Rapids MN 56470



website: www.AffinityRealEstate.com | email: info@affinityrealestate.com | office: 218-237-3333 | fax: 218-237-3377

Affinity
REAL ESTATE INC

\$515,000
MLS 6686027 Lake Home
12752 Eagle Ridge Drive
Baxter MN 56425



website: www.AffinityRealEstate.com | email: info@affinityrealestate.com | office: 218-237-3333 | fax: 218-237-3377



\$515,000
 MLS 6686027 Lake Home
 12752 Eagle Ridge Drive
 Baxter MN 56425



website: www.AffinityRealEstate.com | email: info@affinityrealestate.com | office: 218-237-3333 | fax: 218-237-3377

Affinity
REAL ESTATE INC

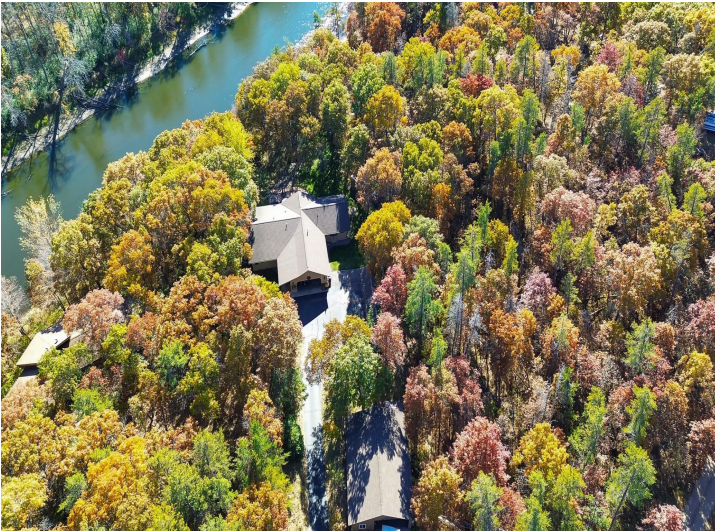
\$515,000
MLS 6686027 Lake Home
12752 Eagle Ridge Drive
Baxter MN 56425



website: www.AffinityRealEstate.com | email: info@affinityrealestate.com | office: 218-237-3333 | fax: 218-237-3377

Affinity
REAL ESTATE INC

\$515,000
MLS 6686027 Lake Home
12752 Eagle Ridge Drive
Baxter MN 56425



website: www.AffinityRealEstate.com | email: info@affinityrealestate.com | office: 218-237-3333 | fax: 218-237-3377

Affinity
REAL ESTATE INC

\$515,000
MLS 6686027 Lake Home
12752 Eagle Ridge Drive
Baxter MN 56425



website: www.AffinityRealEstate.com | email: info@affinityrealestate.com | office: 218-237-3333 | fax: 218-237-3377



\$515,000
MLS 6686027 Lake Home
12752 Eagle Ridge Drive
Baxter MN 56425