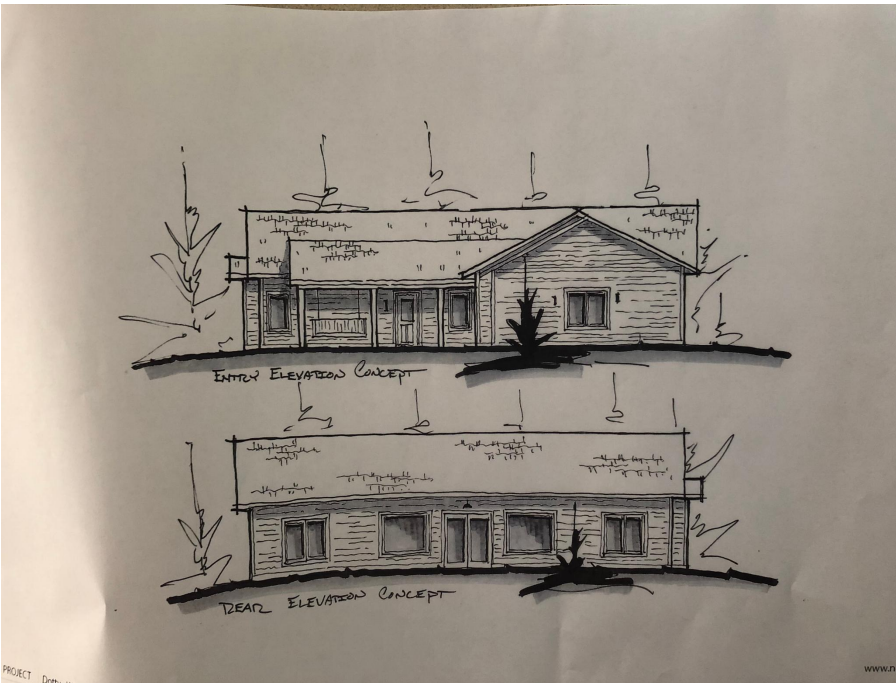




MLS 6686433 Lake Land

**\$99,900**



**Description:**

Welcome to the Mississippi! This private lot at the end of the cul de sac sits at 1.33 acres on the glorious Mississippi River. With a gradual elevation down to the water's edge on the south side of the property, you'd find fish one cast away! Within minutes from the Crow Wing State Park bike trails. Sellers have a floor plan design available with an acceptable offer if interested. The property will have a fresh road, city water and sewer, and a fiber optic installed by no later than October 2024. Please contact the listing agent with any questions. The first 15 feet of the driveway will be installed by October. House plans available if interested.

**Additional Details:**

Lot Acres	1.33
Lot Dimensions	35 x 425
School District	181
Taxes	\$710
Taxes with Assessments	\$710
Tax Year	2023

**Additional Features:**

**Driving Directions:**

Hwy 371 S to E (left) on Cty Rd. 48 to right on Forestview to left on Parkview Circle to sign at end of cul-de-sac on right.



Listed By:  
Woods to Water Real Estate

Affinity Real Estate Inc. participates in the Regional Multiple Listing Service of Minnesota, Inc Broker Reciprocity (sm) program, allowing us to display other broker's listings on our website. All properties are subject to prior sale, change or withdrawal.



**Call Affinity Real Estate**

**218-237-3333**

**info@affinityrealestate.com**

MLS



**Affinity Real Estate - 600 Park Avenue South - Park Rapids MN 56470**









website: [www.AffinityRealEstate.com](http://www.AffinityRealEstate.com) | email: [info@affinityrealestate.com](mailto:info@affinityrealestate.com) | office: 218-237-3333 | fax: 218-237-3377



**\$99,900**  
 MLS 6686433 Lake Land  
 TBD Parkview Circle  
 Baxter MN 56425





website: [www.AffinityRealEstate.com](http://www.AffinityRealEstate.com) | email: [info@affinityrealestate.com](mailto:info@affinityrealestate.com) | office: 218-237-3333 | fax: 218-237-3377



**\$99,900**  
 MLS 6686433 Lake Land  
 TBD Parkview Circle  
 Baxter MN 56425





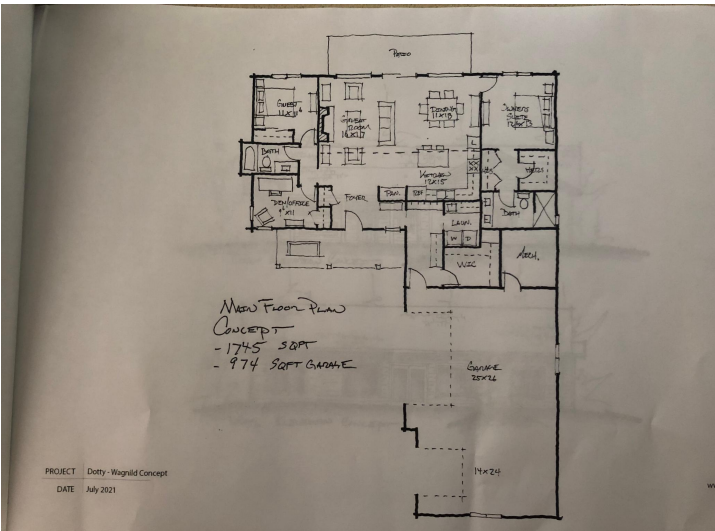
website: [www.AffinityRealEstate.com](http://www.AffinityRealEstate.com) | email: [info@affinityrealestate.com](mailto:info@affinityrealestate.com) | office: 218-237-3333 | fax: 218-237-3377

**Affinity**  
REAL ESTATE INC

**\$99,900**

MLS 6686433 Lake Land  
TBD Parkview Circle  
Baxter MN 56425





website: [www.AffinityRealEstate.com](http://www.AffinityRealEstate.com) | email: [info@affinityrealestate.com](mailto:info@affinityrealestate.com) | office: 218-237-3333 | fax: 218-237-3377



**\$99,900**  
 MLS 6686433 Lake Land  
 TBD Parkview Circle  
 Baxter MN 56425