



MLS 6686858 Residential

\$495,000

3,900 sq ft
5 bedrooms
4 baths

853 Franklin Avenue
Wadena MN 56482

Status: Active

Description:

Executive Wadena Home for Sale:

Discover your dream home in this stunning, completely remodeled Executive Wadena residence! Perfectly designed for both comfort and style, this impressive property features 4 spacious bedrooms and 4 bathrooms.

Step into the main level, where you'll find a spacious and inviting kitchen complete with a modern island, perfect for casual dining and family gatherings. Enjoy the convenience of patio doors that lead to a spacious composite deck, providing calming views of the expansive backyard—perfect for outdoor entertaining.

The mudroom, conveniently located off the attached garage, offers ample cubbies for all your catch-all needs, keeping your home organized and clutter-free. The elegant living room features a cozy gas fireplace with a stunning stacked stone surround, creating a warm and welcoming atmosphere. Additionally, you'll find a dedicated office space and a formal dining area, ideal for hosting dinner parties or enjoying family meals.

Retreat upstairs to find four generously sized bedrooms, each thoughtfully designed for comfort. Two of the bedrooms boast their own vanity and sink, offering added convenience. The primary bath is a true oasis, complete with a luxurious walk-in tile shower, double vanity, private privy, walk-in closet, and heated floors—perfect for unwinding after a long day. Venture down to the lower level, which serves as your ultimate getaway space. Enjoy movie nights in the media/entertainment room, mix up drinks at the wet bar, or challenge friends to a game of pool in the dedicated pool table area. There's also an extra bedroom for guests, providing even more versatility.

Situated on a spacious 150x150 lot, this incredible property includes an insulated and heated attached 3-car garage as well as a detached, heated 30x40 garage with workshop. Additional features include underground sprinklers, a dedicated garden area, and a garden shed, making it easy to maintain the beautiful landscaping.

This Executive Wadena home has it all—style, comfort, and functionality. Don't miss your chance to make it yours! Schedule a showing today!

Additional Details:

Year Built	1992
Lot Acres	0.52
Lot Dimensions	150x150
Garage Stalls	6
School District	2155

Listing Price	\$5,906
Broker Reciprocity	Yes
Listing Agent	Coldwell Banker Preferred Partners

Affinity Real Estate Inc. participates in the Regional Multiple Listing Service of Minnesota, Inc Broker Reciprocity (sm) program, allowing us to display other broker's listings on our website. All properties are subject to prior sale, change or withdrawal.

Basement: Finished, Full, Wood **Fuel:** Natural Gas **Garage:** 6 **Heat:** Forced Air, **Sewer:** City Sewer/Connected, **Water:** City Water/Connected, Sand Point **Air Conditioning:** Central Air



Call Affinity Real Estate

218-237-3333

info@affinityrealestate.com



Affinity Real Estate - 600 Park Avenue South - Park Rapids MN 56470

Driving Directions:

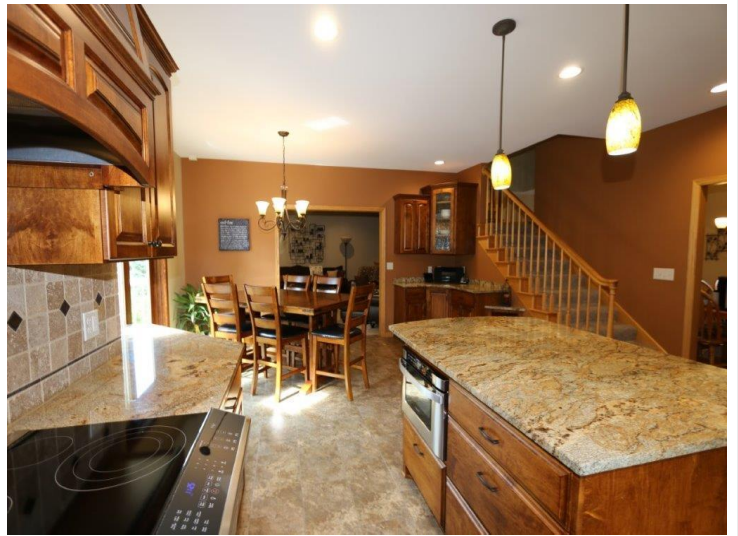
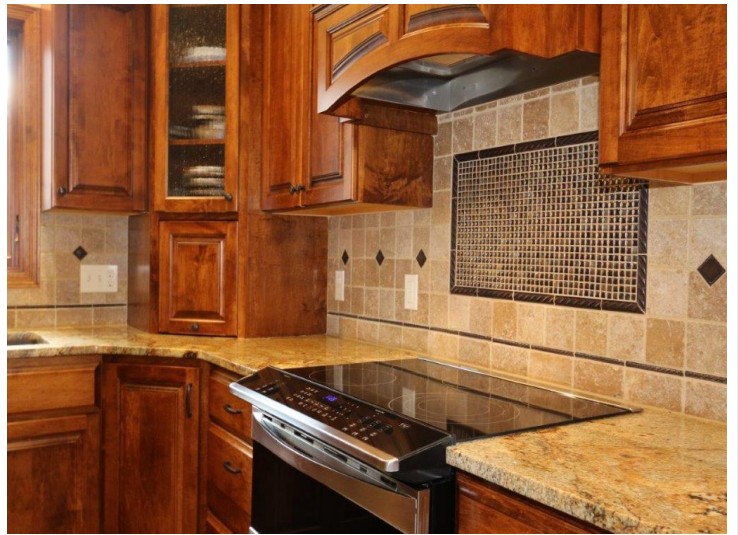
853 Franklin Ave SW, Wadena, MN



website: www.AffinityRealEstate.com | email: info@affinityrealestate.com | office: 218-237-3333 | fax: 218-237-3377

Affinity
REAL ESTATE INC

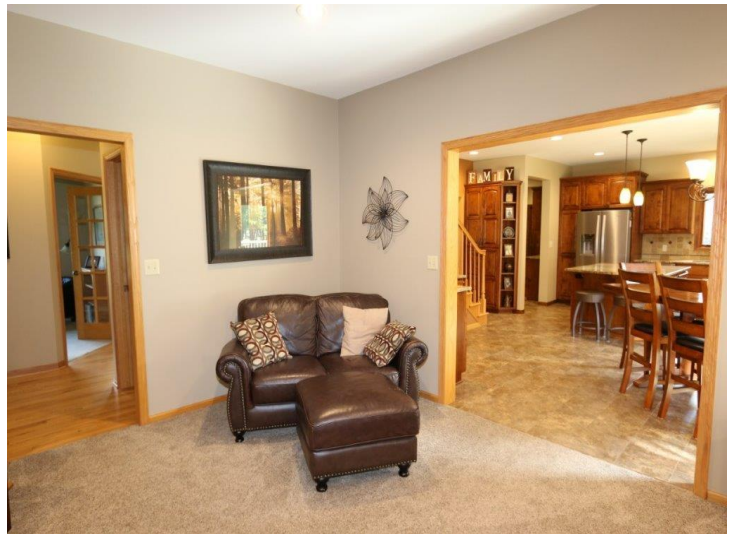
\$495,000
MLS 6686858 Residential
853 Franklin Avenue
Wadena MN 56482



website: www.AffinityRealEstate.com | email: info@affinityrealestate.com | office: 218-237-3333 | fax: 218-237-3377

Affinity
REAL ESTATE INC

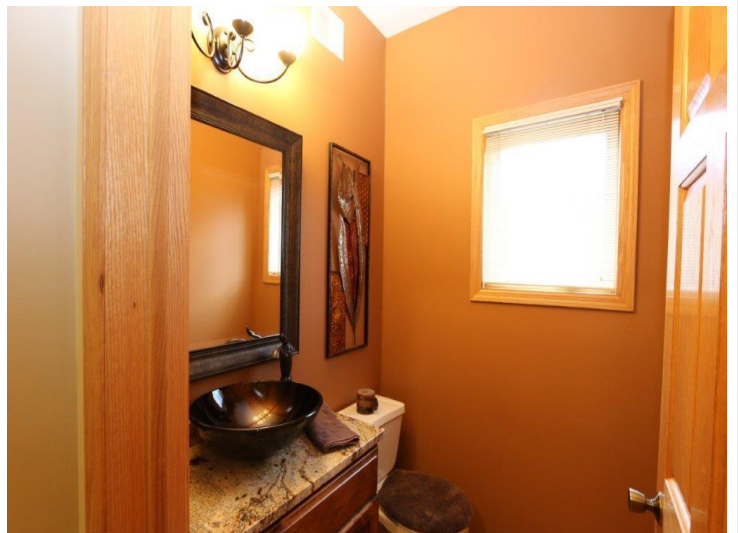
\$495,000
MLS 6686858 Residential
853 Franklin Avenue
Wadena MN 56482



website: www.AffinityRealEstate.com | email: info@affinityrealestate.com | office: 218-237-3333 | fax: 218-237-3377

Affinity
REAL ESTATE INC

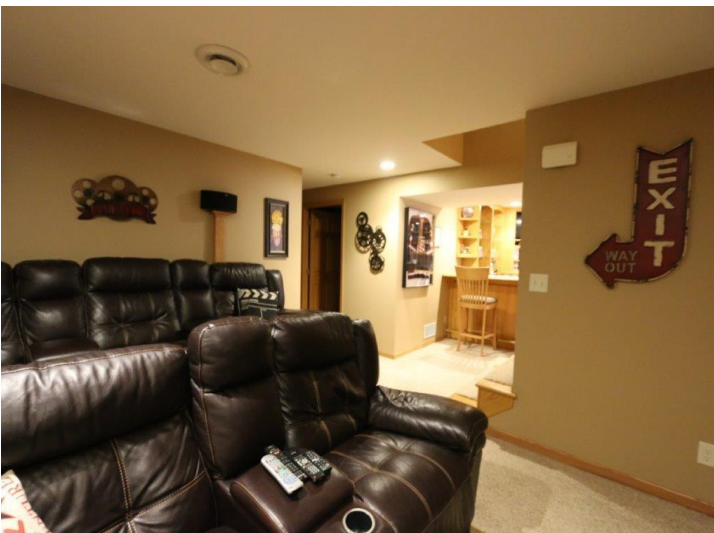
\$495,000
MLS 6686858 Residential
853 Franklin Avenue
Wadena MN 56482



website: www.AffinityRealEstate.com | email: info@affinityrealestate.com | office: 218-237-3333 | fax: 218-237-3377

Affinity
REAL ESTATE INC

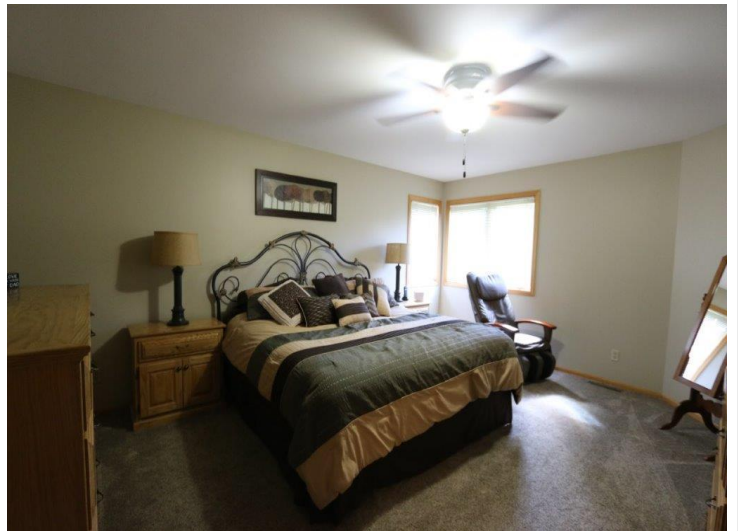
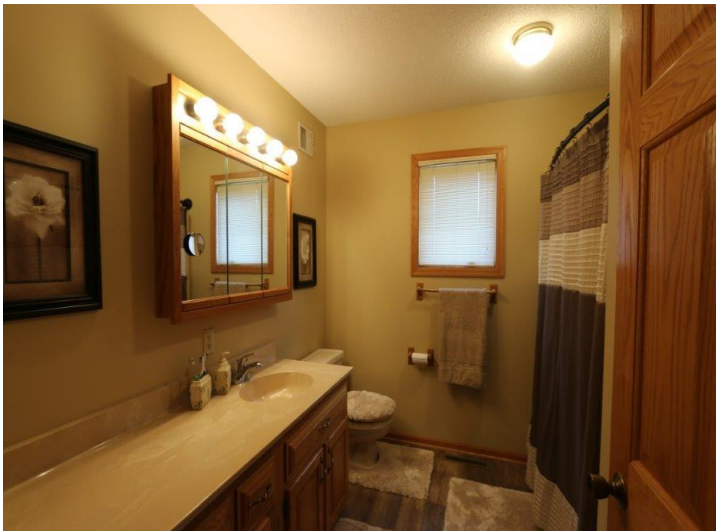
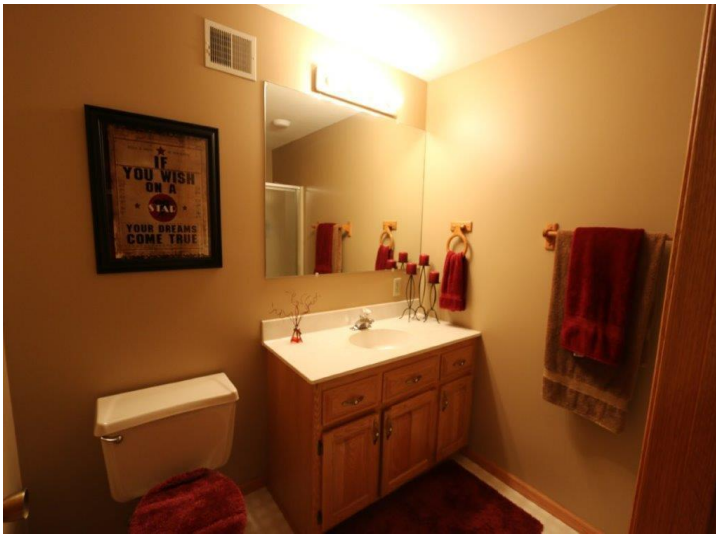
\$495,000
MLS 6686858 Residential
853 Franklin Avenue
Wadena MN 56482



website: www.AffinityRealEstate.com | email: info@affinityrealestate.com | office: 218-237-3333 | fax: 218-237-3377

Affinity
REAL ESTATE INC

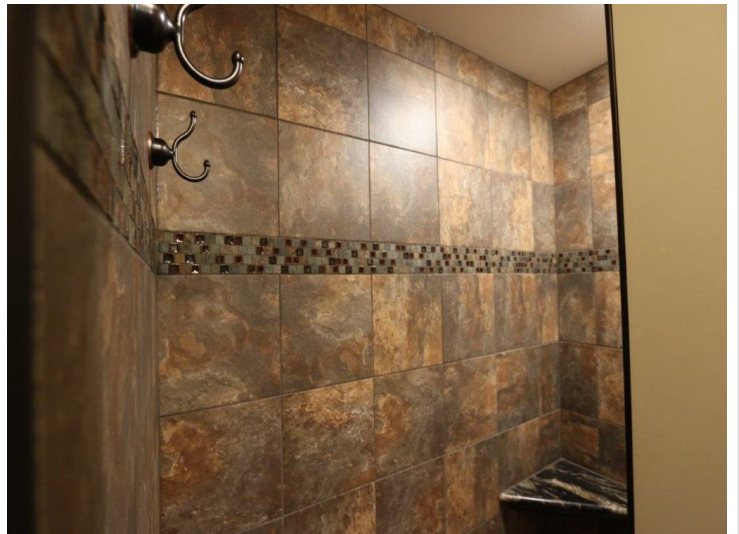
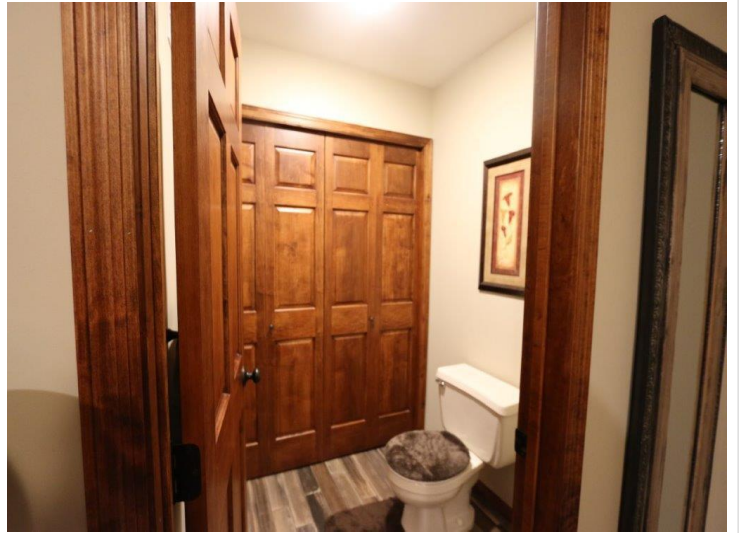
\$495,000
MLS 6686858 Residential
853 Franklin Avenue
Wadena MN 56482



website: www.AffinityRealEstate.com | email: info@affinityrealestate.com | office: 218-237-3333 | fax: 218-237-3377

Affinity
REAL ESTATE INC

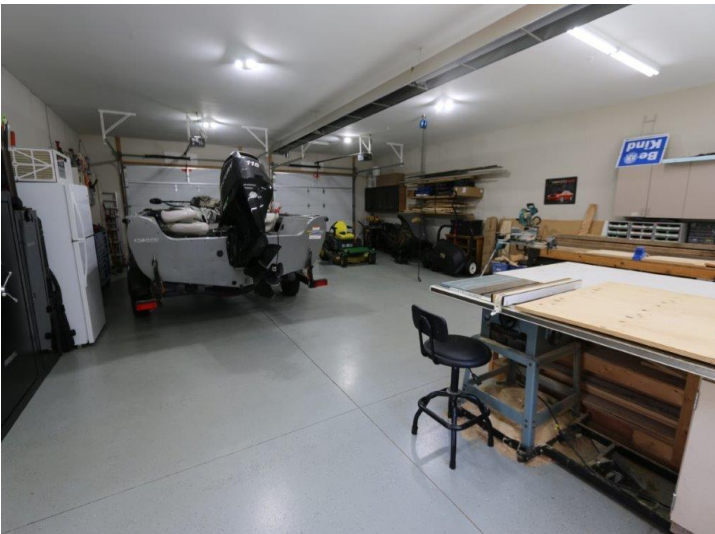
\$495,000
MLS 6686858 Residential
853 Franklin Avenue
Wadena MN 56482



website: www.AffinityRealEstate.com | email: info@affinityrealestate.com | office: 218-237-3333 | fax: 218-237-3377

Affinity
REAL ESTATE INC

\$495,000
MLS 6686858 Residential
853 Franklin Avenue
Wadena MN 56482



website: www.AffinityRealEstate.com | email: info@affinityrealestate.com | office: 218-237-3333 | fax: 218-237-3377



\$495,000
 MLS 6686858 Residential
 853 Franklin Avenue
 Wadena MN 56482



website: www.AffinityRealEstate.com | email: info@affinityrealestate.com | office: 218-237-3333 | fax:218-237-3377



\$495,000
MLS 6686858 Residential
853 Franklin Avenue
Wadena MN 56482