



MLS 6686890 Residential

\$249,900

1,684 sq ft
2 bedrooms
2 baths

2208 Spruce Drive
Brainerd MN 56401

Status: Active

Description:

Welcome to 2208 Spruce Drive, a well-maintained 2-bedroom, 2-bathroom townhome offering comfort and convenience in a peaceful Brainerd neighborhood. With a two-car tuck-under garage, this home provides ample parking and storage space. Inside, you'll find solid surface countertops and stainless steel appliances, making the kitchen both stylish and functional. Located near medical clinics and other essential amenities, this home is perfect for those looking for easy, low-maintenance living in a prime location.

Don't miss out on this fantastic opportunity—schedule a showing today!

Additional Details:

Year Built	1979
Lot Acres	0.11
Lot Dimensions	55 x 87 x .50
Garage Stalls	2
School District	181
Taxes	\$1,616
Taxes with Assessments	\$1,616
Tax Year	2024

Additional Features:

Basement: Finished, Walkout **Fuel:** Natural Gas **Garage:** 2 **Heat:** Forced Air **Sewer:** City Sewer/Connected **Water:** City Water/Connected **Air Conditioning:** Central Air

Driving Directions:

GO WEST ON BUFFALO HILLS LANE TO RIGHT ON SPRUCE ST, THEN A LEFT INTO EDGEWOOD TOWNHOMES.



Listed By:
Woods to Water Real Estate

Affinity Real Estate Inc. participates in the Regional Multiple Listing Service of Minnesota, Inc Broker Reciprocity (sm) program, allowing us to display other broker's listings on our website. All properties are subject to prior sale, change or withdrawal.



Call Affinity Real Estate

218-237-3333

info@affinityrealestate.com



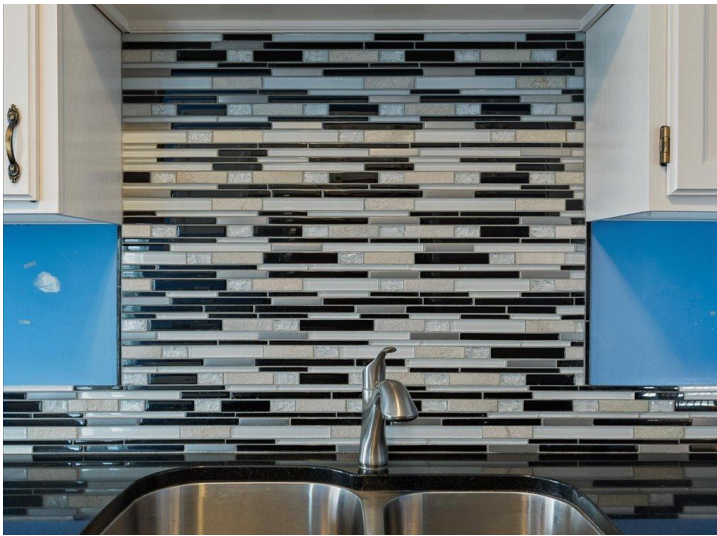
Affinity Real Estate - 600 Park Avenue South - Park Rapids MN 56470



website: www.AffinityRealEstate.com | email: info@affinityrealestate.com | office: 218-237-3333 | fax: 218-237-3377



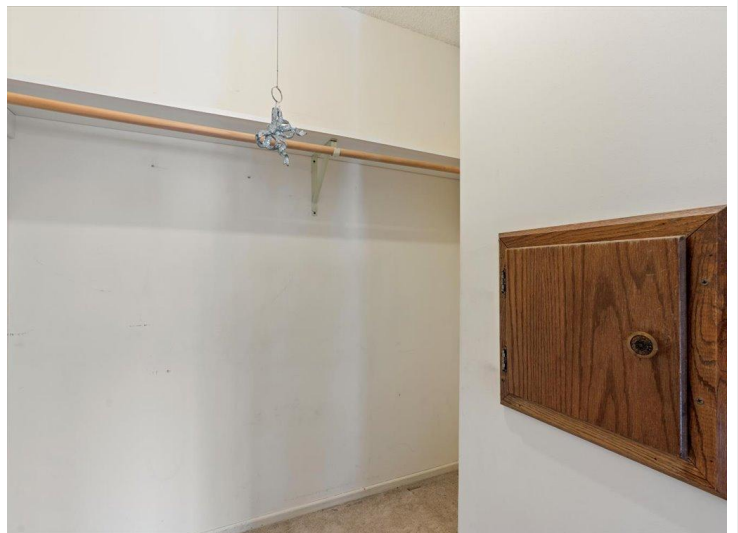
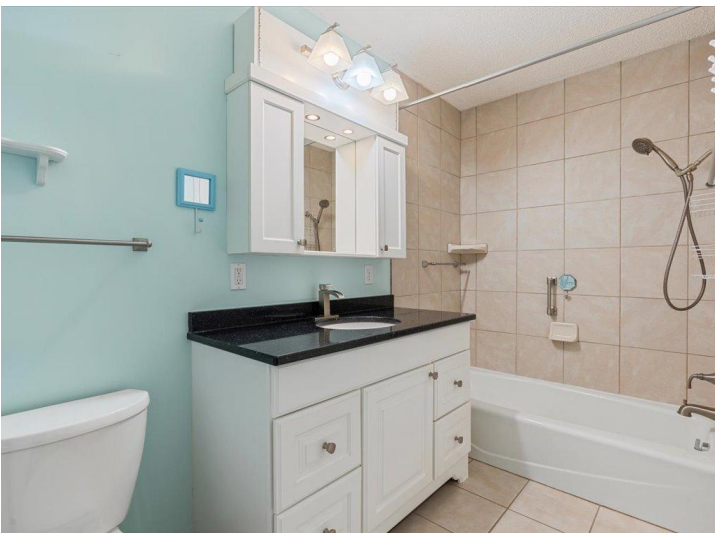
\$249,900
 MLS 6686890 Residential
 2208 Spruce Drive
 Brainerd MN 56401



website: www.AffinityRealEstate.com | email: info@affinityrealestate.com | office: 218-237-3333 | fax: 218-237-3377

Affinity
REAL ESTATE INC

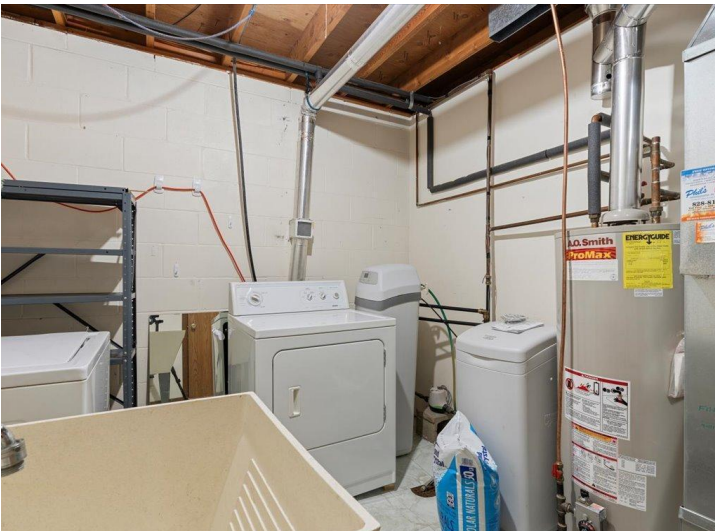
\$249,900
MLS 6686890 Residential
2208 Spruce Drive
Brainerd MN 56401



website: www.AffinityRealEstate.com | email: info@affinityrealestate.com | office: 218-237-3333 | fax: 218-237-3377



\$249,900
MLS 6686890 Residential
2208 Spruce Drive
Brainerd MN 56401



website: www.AffinityRealEstate.com | email: info@affinityrealestate.com | office: 218-237-3333 | fax: 218-237-3377

Affinity
REAL ESTATE INC

\$249,900
MLS 6686890 Residential
2208 Spruce Drive
Brainerd MN 56401



website: www.AffinityRealEstate.com | email: info@affinityrealestate.com | office: 218-237-3333 | fax: 218-237-3377



\$249,900
MLS 6686890 Residential
2208 Spruce Drive
Brainerd MN 56401