



MLS 6686895 Land

\$289,000

16.2 Acres
Raw Land

20163 Tranquility Drive
Brainerd MN 56401

Status: Active

Description:

Where the road to tranquility ends, your next chapter only begins!

Tucked away in the woods of Merrifield, this 16-acre hideaway isn't just a property, it's a chance to build something completely your own without constant commutes to and from your current residence. Enjoy its current state, or consider it a major head start to your next goal. Here's why:

Enter the property at the end of the private cul de sac and behold an awesome, modern pole building and thoughtfully cleared setting for a future home and more. Forget the chainsaws and heavy equipment for now because this clearing is dialed in.

Beyond that lies a fantastic surrounding of majestic yet easily walkable woods on solid high grounds--no slogging through swamps or tangled brambles here!

Inside, there's a perfect balance of storage and workshop area with a 10-foot overhead door and a loft. Tired from a long day's worth of property projects? Easily spend the night in the finished living quarters that includes a bar/countertop, dining and living area. Electricity is on; just bring some water and snack or make a quick jaunt to Merrifield for supplies. Sure, you can't call it a house, but you won't have any trouble calling it "home."


Additional Details:

Lot Acres	16.2
Lot Dimensions	1138x411x671x1338x22
School District	181
Taxes	\$1,030
Taxes with Assessments	\$1,030
Tax Year	2025

Additional Features:

Driving Directions:

From Brainerd - Go North on County Road 3 or Mill Avenue to East on Executive Acres Road to North on E Tranquility Drive to fire number 20163.



Listed By:
Your Home Sold Guaranteed Realty Exclusive

Affinity Real Estate Inc. participates in the Regional Multiple Listing Service of Minnesota, Inc Broker Reciprocity (sm) program, allowing us to display other broker's listings on our website. All properties are subject to prior sale, change or withdrawal.



Call Affinity Real Estate

218-237-3333

info@affinityrealestate.com



Affinity Real Estate - 600 Park Avenue South - Park Rapids MN 56470



website: www.AffinityRealEstate.com | email: info@affinityrealestate.com | office: 218-237-3333 | fax:218-237-3377



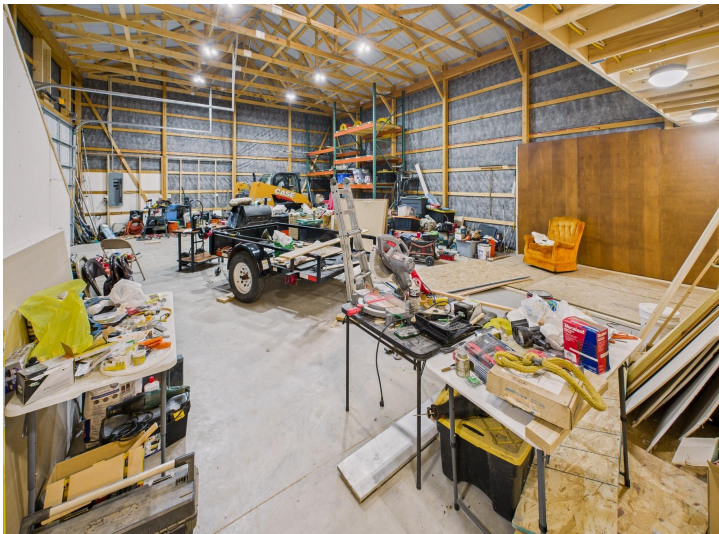
\$289,000
MLS 6686895 Land
20163 Tranquility Drive
Brainerd MN 56401



website: www.AffinityRealEstate.com | email: info@affinityrealestate.com | office: 218-237-3333 | fax:218-237-3377



\$289,000
MLS 6686895 Land
20163 Tranquility Drive
Brainerd MN 56401



website: www.AffinityRealEstate.com | email: info@affinityrealestate.com | office: 218-237-3333 | fax:218-237-3377

Affinity
REAL ESTATE INC

\$289,000
MLS 6686895 Land
20163 Tranquility Drive
Brainerd MN 56401



website: www.AffinityRealEstate.com | email: info@affinityrealestate.com | office: 218-237-3333 | fax: 218-237-3377

Affinity
REAL ESTATE INC

\$289,000
MLS 6686895 Land
20163 Tranquility Drive
Brainerd MN 56401



website: www.AffinityRealEstate.com | email: info@affinityrealestate.com | office: 218-237-3333 | fax:218-237-3377



\$289,000
MLS 6686895 Land
20163 Tranquility Drive
Brainerd MN 56401