



MLS 6687080 Land

\$69,900

2 Acres
Raw Land

TBD Lot 13 Northwoods Lane
Breezy Point MN 56472

Status: Active

Description:

(description unavailable)

Additional Details:

Lot Acres	2
Lot Dimensions	200x436
School District	186
Taxes	\$210
Taxes with Assessments	\$210
Tax Year	2025

Additional Features:

Driving Directions:

From breezy Point Resort, go North on County RD 11 to left on Bushmann's to Right on Northwoods Lane to sign on left.



Listed By:
Kurilla Real Estate LTD

Affinity Real Estate Inc. participates in the Regional Multiple Listing Service of Minnesota, Inc Broker Reciprocity (sm) program, allowing us to display other broker's listings on our website. All properties are subject to prior sale, change or withdrawal.



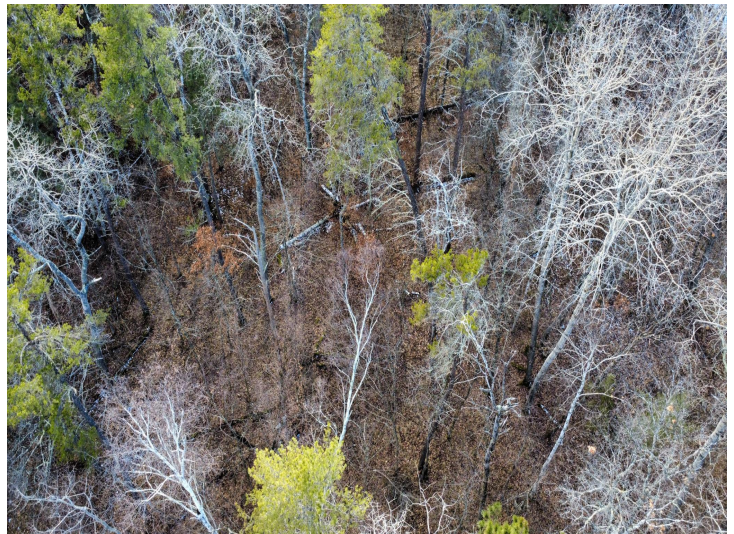
Call Affinity Real Estate

218-237-3333

info@affinityrealestate.com



Affinity Real Estate - 600 Park Avenue South - Park Rapids MN 56470



website: www.AffinityRealEstate.com | email: info@affinityrealestate.com | office: 218-237-3333 | fax:218-237-3377



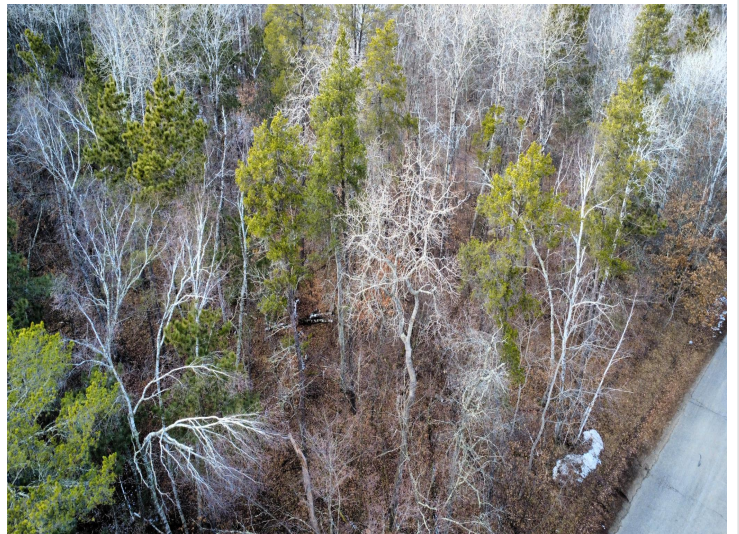
\$69,900
MLS 6687080 Land
TBD Lot 13 Northwoods
Lane
Breezy Point MN 56472



website: www.AffinityRealEstate.com | email: info@affinityrealestate.com | office: 218-237-3333 | fax:218-237-3377



\$69,900
MLS 6687080 Land
TBD Lot 13 Northwoods
Lane
Breezy Point MN 56472



website: www.AffinityRealEstate.com | email: info@affinityrealestate.com | office: 218-237-3333 | fax:218-237-3377



\$69,900
MLS 6687080 Land
TBD Lot 13 Northwoods
Lane
Breezy Point MN 56472



website: www.AffinityRealEstate.com | email: info@affinityrealestate.com | office: 218-237-3333 | fax:218-237-3377



\$69,900
MLS 6687080 Land
TBD Lot 13 Northwoods
Lane
Breezy Point MN 56472