



MLS 6687364 Residential

\$305,000

2,908 sq ft
3 bedrooms
3 baths

1001 Park Avenue
Staples MN 56479

Status: Active

Description:

Charming Rambler in Staples, MN - A Place to Call Home Welcome to this warm and inviting rambler in the heart of Staples! With over 2,600 finished square feet, this home is designed for both comfort and practicality. Inside, rich wood floors set the stage for an open-concept kitchen that flows seamlessly into the informal dining area. The spacious living room is bright and welcoming, while the large family room-complete with a cozy fireplace-creates the perfect space to gather. The primary suite is a peaceful retreat, featuring a private bath with a jetted garden tub and a stand-up shower. Guests will appreciate the thoughtfully designed second bath, which includes a granite countertop, a large soaking tub, and a separate dressing area. The finished lower level adds even more flexibility, with a second family room that's perfect for movie nights, a hobby space, or just extra room to spread out. A dedicated craft room and built-in workbench make this level as functional as it is inviting. Step outside to enjoy multiple porches and decks, including an 18x20 partially covered deck off the back of the garage-perfect for relaxing or entertaining. The heated and insulated workshop in the garage is ideal for projects, and raised garden beds are ready for your green thumb. An underground dog fence is already in place, making this a great setup for pet owners. The sellers have loved this home and are ready for their next chapter-now it's your turn! Come see why this could be the perfect place for you.

Additional Details:

Year Built	1966
Lot Acres	0.67
Lot Dimensions	110x264
Garage Stalls	2
School District	2170
Taxes	\$4,084
Taxes with Assessments	\$4,084
Tax Year	2024

Additional Features:

Fuel: Natural Gas **Heat:** Boiler

Driving Directions:

From US 10, Take 12th St NE to Park Ave NE, Keep right to continue on 12th St NE, continue onto 2nd Ave NE, turn right onto 1001 Park Ave NE, destination will be on the right.
Edina Realty, Inc.



Call Affinity Real Estate

218-237-3333

info@affinityrealestate.com



Affinity Real Estate - 600 Park Avenue South - Park Rapids MN 56470



website: www.AffinityRealEstate.com | email: info@affinityrealestate.com | office: 218-237-3333 | fax:218-237-3377



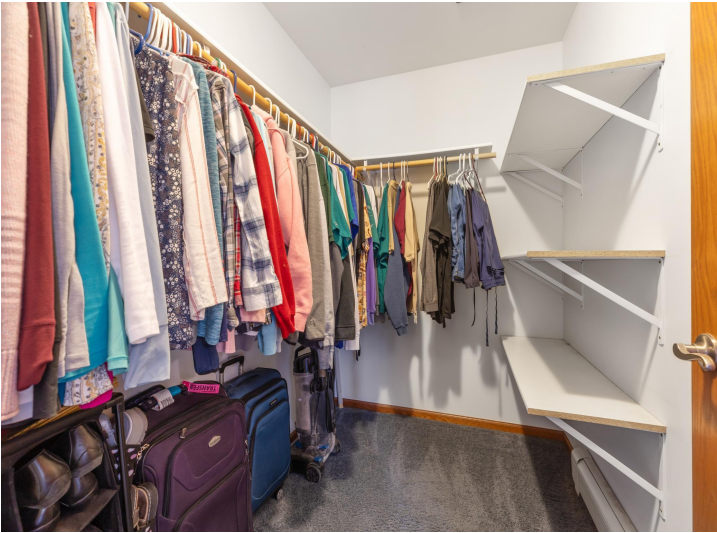
\$305,000
MLS 6687364 Residential
1001 Park Avenue
Staples MN 56479



website: www.AffinityRealEstate.com | email: info@affinityrealestate.com | office: 218-237-3333 | fax:218-237-3377

Affinity
REAL ESTATE INC

\$305,000
MLS 6687364 Residential
1001 Park Avenue
Staples MN 56479



website: www.AffinityRealEstate.com | email: info@affinityrealestate.com | office: 218-237-3333 | fax:218-237-3377

Affinity
REAL ESTATE INC

\$305,000
MLS 6687364 Residential
1001 Park Avenue
Staples MN 56479



website: www.AffinityRealEstate.com | email: info@affinityrealestate.com | office: 218-237-3333 | fax:218-237-3377



\$305,000
MLS 6687364 Residential
1001 Park Avenue
Staples MN 56479



website: www.AffinityRealEstate.com | email: info@affinityrealestate.com | office: 218-237-3333 | fax:218-237-3377



\$305,000
MLS 6687364 Residential
1001 Park Avenue
Staples MN 56479



website: www.AffinityRealEstate.com | email: info@affinityrealestate.com | office: 218-237-3333 | fax:218-237-3377



\$305,000
MLS 6687364 Residential
1001 Park Avenue
Staples MN 56479