



MLS 6687817 Commercial

**\$79,900**

100 Minnesota Avenue  
Sebeka MN 56477

Status: Active

**Description:**

Step into a piece of history with this wonderful 10,000+ square foot mixed-use building on Main Street in the heart of Sebeka! This property has seen it all - once home to a bank, law office, dental office, furniture store, bowling alley, and even apartments! Now, its ready for its next chapter. With tons of character and potential, this huge building offers endless possibilities for commercial, residential, or mixed use. It also has a 50' by 45' double attached shop, providing ample space for storage, a workshop, or expansion. This is a rare opportunity to restore and reimagine a true Main Street landmark. Don't miss your chance to breathe life into this incredible space!

**Additional Details:**

Year Built	1930
Lot Acres	0.2
Lot Dimensions	56x146
Garage Stalls	2
School District	820
Taxes	\$1,254
Taxes with Assessments	\$1,254
Tax Year	2024

**Additional Features:**

**Fuel:** Natural Gas **Garage:** 2 **Heat:** Boiler, Other **Sewer:** City Sewer/Connected **Water:** City Water/Connected

**Driving Directions:**

From Hwys. 71/34 in Park Rapids, South on Hwy 71 to Sebeka. East on Minnesota Ave West for 4 blocks to the property on the left.



Listed By:  
Coldwell Banker Crown Realtors

Affinity Real Estate Inc. participates in the Regional Multiple Listing Service of Minnesota, Inc Broker Reciprocity (sm) program, allowing us to display other broker's listings on our website. All properties are subject to prior sale, change or withdrawal.



**Call Affinity Real Estate**

**218-237-3333**

**info@affinityrealestate.com**



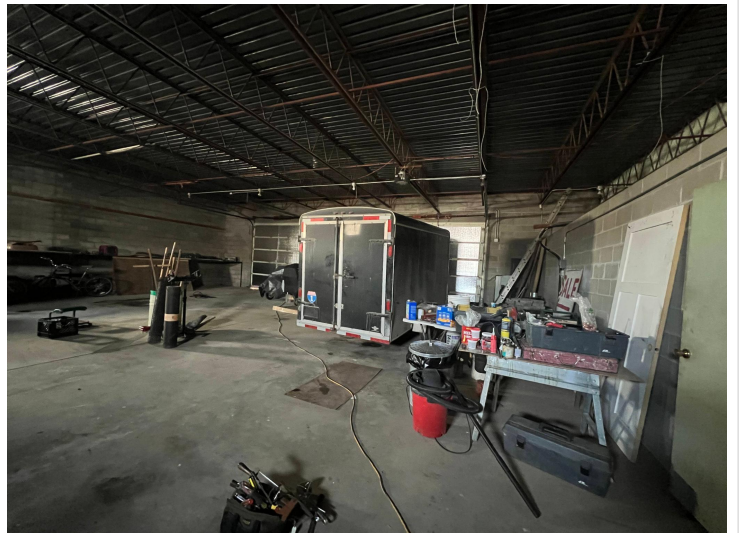
**Affinity Real Estate - 600 Park Avenue South - Park Rapids MN 56470**



website: [www.AffinityRealEstate.com](http://www.AffinityRealEstate.com) | email: [info@affinityrealestate.com](mailto:info@affinityrealestate.com) | office: 218-237-3333 | fax: 218-237-3377

**Affinity**  
REAL ESTATE INC

**\$79,900**  
MLS 6687817 Commercial  
100 Minnesota Avenue  
Sebeka MN 56477



website: [www.AffinityRealEstate.com](http://www.AffinityRealEstate.com) | email: [info@affinityrealestate.com](mailto:info@affinityrealestate.com) | office: 218-237-3333 | fax:218-237-3377

**Affinity**  
REAL ESTATE INC

**\$79,900**  
MLS 6687817 Commercial  
100 Minnesota Avenue  
Sebeka MN 56477



website: [www.AffinityRealEstate.com](http://www.AffinityRealEstate.com) | email: [info@affinityrealestate.com](mailto:info@affinityrealestate.com) | office: 218-237-3333 | fax:218-237-3377



**\$79,900**  
MLS 6687817 Commercial  
100 Minnesota Avenue  
Sebeka MN 56477