



MLS 6687853 Residential

**\$119,000**

2,532 sq ft  
6 bedrooms  
2 baths

723 Irvine Avenue  
Bemidji MN 56601

Status: Hold

**Description:**

6 Bedroom, 2 bath home on corner lot with detached garage. Lots of improvements w/updated water heater, furnace, kitchen and flooring. Most windows updated or have newer window inserts. Current rental license for 5 Bedrooms.

**Additional Details:**

Year Built	1910
Lot Acres	0.16
Lot Dimensions	50x140x50x140
Garage Stalls	2
School District	31
Taxes	\$2,356
Taxes with Assessments	\$2,356
Tax Year	2024

**Additional Features:**

**Basement:** Partially Finished **Fuel:** Natural Gas **Garage:** 2 **Heat:** Forced Air **Sewer:** City Sewer/Connected **Water:** City Water/Connected **Air Conditioning:** None

**Driving Directions:**

Irvine Ave to house



Listed By:  
Lake-N-Woods Realty

Affinity Real Estate Inc. participates in the Regional Multiple Listing Service of Minnesota, Inc Broker Reciprocity (sm) program, allowing us to display other broker's listings on our website. All properties are subject to prior sale, change or withdrawal.



Call Affinity Real Estate

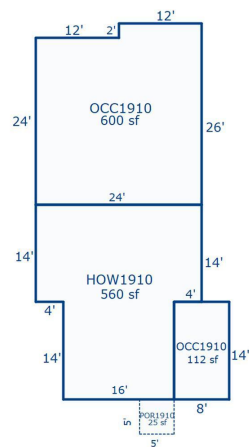
**218-237-3333**

[info@affinityrealestate.com](mailto:info@affinityrealestate.com)



Affinity Real Estate - 600 Park Avenue South - Park Rapids MN 56470





website: [www.AffinityRealEstate.com](http://www.AffinityRealEstate.com) | email: [info@affinityrealestate.com](mailto:info@affinityrealestate.com) | office: 218-237-3333 | fax: 218-237-3377



**\$119,000**  
 MLS 6687853 Residential  
 723 Irvine Avenue  
 Bemidji MN 56601