



MLS 6688180 Commercial

**\$119,000**

112 Farwell Street  
Verndale MN 56481

Status: Active

**Description:**

LOOKING for a Great Business Opportunity?

This fully furnished restaurant is waiting for you, Excellent traffic flow location on busy Hwy #10 In Verndale. Pleasant interior. Available at only \$119,000.

**Additional Details:**

Year Built	1927
Lot Acres	0.16
Lot Dimensions	50x141
School District	818
Taxes	\$1,536
Taxes with Assessments	\$1,536
Tax Year	2024

**Additional Features:**

**Basement:** Block, Crawl Space **Fuel:** Natural Gas **Heat:** Forced Air **Sewer:** City Sewer/Connected **Water:** City Water/Connected **Air Conditioning:** Central Air, Wall Unit(s)

**Driving Directions:**

Hwy 10 south 2 blocks on Main St



Listed By:  
Schultz Auctioneers Landmark

Affinity Real Estate Inc. participates in the Regional Multiple Listing Service of Minnesota, Inc Broker Reciprocity (sm) program, allowing us to display other broker's listings on our website. All properties are subject to prior sale, change or withdrawal.



Call Affinity Real Estate

**218-237-3333**

[info@affinityrealestate.com](mailto:info@affinityrealestate.com)



Affinity Real Estate - 600 Park Avenue South - Park Rapids MN 56470



website: [www.AffinityRealEstate.com](http://www.AffinityRealEstate.com) | email: [info@affinityrealestate.com](mailto:info@affinityrealestate.com) | office: 218-237-3333 | fax: 218-237-3377



**\$119,000**  
MLS 6688180 Commercial  
112 Farwell Street  
Verndale MN 56481



website: [www.AffinityRealEstate.com](http://www.AffinityRealEstate.com) | email: [info@affinityrealestate.com](mailto:info@affinityrealestate.com) | office: 218-237-3333 | fax:218-237-3377

**Affinity**  
REAL ESTATE INC

**\$119,000**  
MLS 6688180 Commercial  
112 Farwell Street  
Verndale MN 56481



website: [www.AffinityRealEstate.com](http://www.AffinityRealEstate.com) | email: [info@affinityrealestate.com](mailto:info@affinityrealestate.com) | office: 218-237-3333 | fax:218-237-3377

**Affinity**  
REAL ESTATE INC

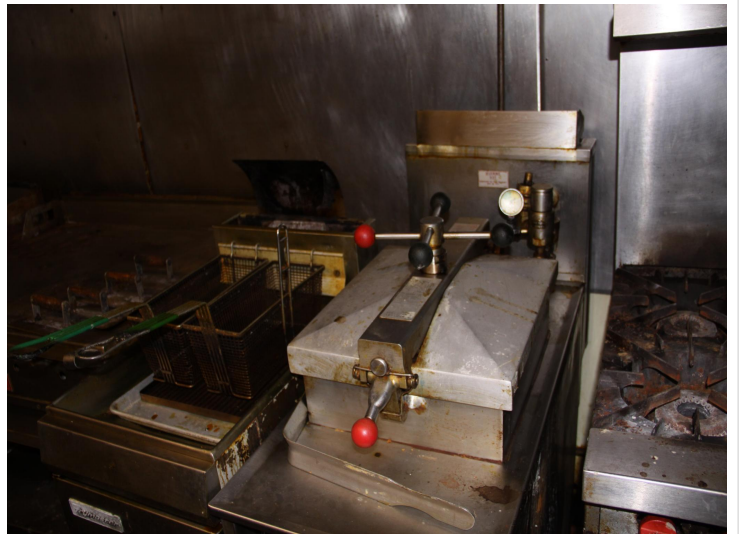
**\$119,000**  
MLS 6688180 Commercial  
112 Farwell Street  
Verndale MN 56481



website: [www.AffinityRealEstate.com](http://www.AffinityRealEstate.com) | email: [info@affinityrealestate.com](mailto:info@affinityrealestate.com) | office: 218-237-3333 | fax: 218-237-3377

**Affinity**  
REAL ESTATE INC

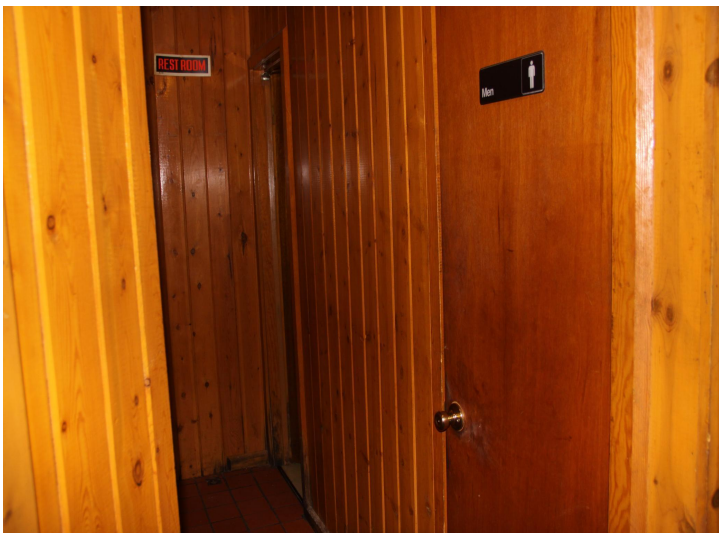
**\$119,000**  
MLS 6688180 Commercial  
112 Farwell Street  
Verndale MN 56481



website: [www.AffinityRealEstate.com](http://www.AffinityRealEstate.com) | email: [info@affinityrealestate.com](mailto:info@affinityrealestate.com) | office: 218-237-3333 | fax:218-237-3377



**\$119,000**  
MLS 6688180 Commercial  
112 Farwell Street  
Verndale MN 56481



website: [www.AffinityRealEstate.com](http://www.AffinityRealEstate.com) | email: [info@affinityrealestate.com](mailto:info@affinityrealestate.com) | office: 218-237-3333 | fax:218-237-3377

**Affinity**  
REAL ESTATE INC

**\$119,000**  
MLS 6688180 Commercial  
112 Farwell Street  
Verndale MN 56481



website: [www.AffinityRealEstate.com](http://www.AffinityRealEstate.com) | email: [info@affinityrealestate.com](mailto:info@affinityrealestate.com) | office: 218-237-3333 | fax:218-237-3377



**\$119,000**  
MLS 6688180 Commercial  
112 Farwell Street  
Verndale MN 56481



website: [www.AffinityRealEstate.com](http://www.AffinityRealEstate.com) | email: [info@affinityrealestate.com](mailto:info@affinityrealestate.com) | office: 218-237-3333 | fax:218-237-3377



**\$119,000**  
MLS 6688180 Commercial  
112 Farwell Street  
Verndale MN 56481

website: [www.AffinityRealEstate.com](http://www.AffinityRealEstate.com) | email: [info@affinityrealestate.com](mailto:info@affinityrealestate.com) | office: 218-237-3333 | fax:218-237-3377



**\$119,000**  
MLS 6688180 Commercial  
112 Farwell Street  
Verndale MN 56481