



MLS 6688362 Lake Home

**\$424,900**

1,725 sq ft  
3 bedrooms  
2 baths

17639 Gayle Drive  
Little Falls MN 56345

Waterfront: Mississippi River

Status: Active

**Description:**

Discover your own private retreat on over 1.2 acres with an incredible 200 feet of Mississippi River frontage! This beautifully maintained home has been cherished by one family since it was built in 1974, and is now ready for its next chapter.

With 3 bedrooms, 2 bathrooms, and a 2-car garage, this home offers plenty of room to relax and entertain. Large picture windows in both the living room and family room frame breathtaking river views, treating you to stunning sunsets all year long. After a long day, unwind in your private sauna, then gather with friends and family at the wet bar just off the cozy downstairs family room. Enjoy the warmth from your fireplace, on cooler days, while reading a good book and enjoying a cup of coffee or hot chocolate.


**Recent Upgrades Include:**

- \* New Furnace (November 2024)
- \* New Hot Water Heater (November 2024)
- \* New Air Exchanger (February 2025)
- \* New Pump used for watering lawn from the river (2022)
- \* Energy Efficiency Enhancements (Weather stripping, new light bulbs, additional insulation)

Get ready for summer! With boating, fishing, bonfires, and endless outdoor fun just steps from your door, the timing couldn't be better to make this riverfront paradise yours. Homes like this don't come along often—schedule your private tour today!

**Additional Details:**

Year Built	1974
Lot Acres	1.24
Lot Dimensions	202x255x200x281
Garage Stalls	2
School District	482
Taxes	\$3,290


 Listed By: **Central Realty LLC**  
 Affinity Real Estate Inc. participates in the Regional Multiple Listing Service of Minnesota, Inc Broker Reciprocity (sm) program, allowing Affinity Real Estate Inc. to display and market listings on other Broker/Realtor properties are subject to prior sale, change or withdrawal.  
**Driving Directions:**



**Call Affinity Real Estate**  
**218-237-3333**  
**info@affinityrealestate.com**



**Affinity Real Estate - 600 Park Avenue South - Park Rapids MN 56470**



website: [www.AffinityRealEstate.com](http://www.AffinityRealEstate.com) | email: [info@affinityrealestate.com](mailto:info@affinityrealestate.com) | office: 218-237-3333 | fax:218-237-3377



**\$424,900**  
MLS 6688362 Lake Home  
17639 Gayle Drive  
Little Falls MN 56345



website: [www.AffinityRealEstate.com](http://www.AffinityRealEstate.com) | email: [info@affinityrealestate.com](mailto:info@affinityrealestate.com) | office: 218-237-3333 | fax:218-237-3377



**\$424,900**  
MLS 6688362 Lake Home  
17639 Gayle Drive  
Little Falls MN 56345



website: [www.AffinityRealEstate.com](http://www.AffinityRealEstate.com) | email: [info@affinityrealestate.com](mailto:info@affinityrealestate.com) | office: 218-237-3333 | fax:218-237-3377

**Affinity**  
REAL ESTATE INC

**\$424,900**  
MLS 6688362 Lake Home  
17639 Gayle Drive  
Little Falls MN 56345



website: [www.AffinityRealEstate.com](http://www.AffinityRealEstate.com) | email: [info@affinityrealestate.com](mailto:info@affinityrealestate.com) | office: 218-237-3333 | fax:218-237-3377

**Affinity**  
REAL ESTATE INC

**\$424,900**  
MLS 6688362 Lake Home  
17639 Gayle Drive  
Little Falls MN 56345



website: [www.AffinityRealEstate.com](http://www.AffinityRealEstate.com) | email: [info@affinityrealestate.com](mailto:info@affinityrealestate.com) | office: 218-237-3333 | fax:218-237-3377

**Affinity**  
REAL ESTATE INC

**\$424,900**  
MLS 6688362 Lake Home  
17639 Gayle Drive  
Little Falls MN 56345



website: [www.AffinityRealEstate.com](http://www.AffinityRealEstate.com) | email: [info@affinityrealestate.com](mailto:info@affinityrealestate.com) | office: 218-237-3333 | fax:218-237-3377

**Affinity**  
REAL ESTATE INC

**\$424,900**  
MLS 6688362 Lake Home  
17639 Gayle Drive  
Little Falls MN 56345



website: [www.AffinityRealEstate.com](http://www.AffinityRealEstate.com) | email: [info@affinityrealestate.com](mailto:info@affinityrealestate.com) | office: 218-237-3333 | fax:218-237-3377

**Affinity**  
REAL ESTATE INC

**\$424,900**  
MLS 6688362 Lake Home  
17639 Gayle Drive  
Little Falls MN 56345

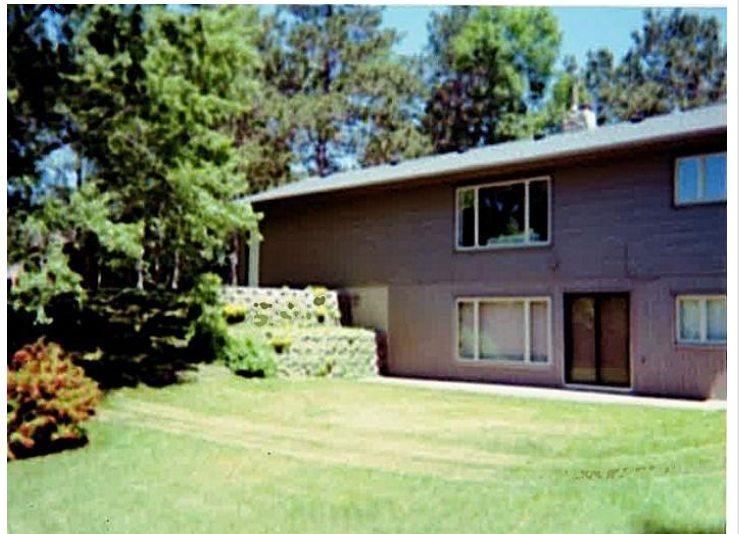




website: [www.AffinityRealEstate.com](http://www.AffinityRealEstate.com) | email: [info@affinityrealestate.com](mailto:info@affinityrealestate.com) | office: 218-237-3333 | fax:218-237-3377



**\$424,900**  
MLS 6688362 Lake Home  
17639 Gayle Drive  
Little Falls MN 56345



website: [www.AffinityRealEstate.com](http://www.AffinityRealEstate.com) | email: [info@affinityrealestate.com](mailto:info@affinityrealestate.com) | office: 218-237-3333 | fax:218-237-3377



**\$424,900**  
MLS 6688362 Lake Home  
17639 Gayle Drive  
Little Falls MN 56345



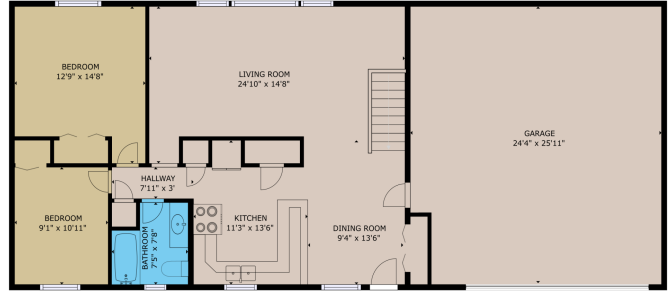
website: [www.AffinityRealEstate.com](http://www.AffinityRealEstate.com) | email: [info@affinityrealestate.com](mailto:info@affinityrealestate.com) | office: 218-237-3333 | fax:218-237-3377



**\$424,900**  
MLS 6688362 Lake Home  
17639 Gayle Drive  
Little Falls MN 56345



FLOOR 1  
 GRASS INTERNAL AREA  
 FLOOR 1 TOTAL AREA: 1000 SQ FT (APPROX)  
 EXCLUDED AREA: GARAGE: 514 SQ FT  
 TOTAL: 486 SQ FT  
 SIZES AND DIMENSIONS ARE APPROXIMATE, ACTUAL MAY VARY



FLOOR 2  
 GRASS INTERNAL AREA  
 FLOOR 2 TOTAL AREA: 1000 SQ FT (APPROX)  
 EXCLUDED AREA: GARAGE: 514 SQ FT  
 TOTAL: 486 SQ FT  
 SIZES AND DIMENSIONS ARE APPROXIMATE, ACTUAL MAY VARY



website: [www.AffinityRealEstate.com](http://www.AffinityRealEstate.com) | email: [info@affinityrealestate.com](mailto:info@affinityrealestate.com) | office: 218-237-3333 | fax:218-237-3377



**\$424,900**  
 MLS 6688362 Lake Home  
 17639 Gayle Drive  
 Little Falls MN 56345