



MLS 6688652 Lake Home

\$849,900

1,248 sq ft
2 bedrooms
1 baths

22481 Lake Hubert Drive
Nisswa MN 56468

Waterfront: Hubert

Status: Active

Description:

ESCAPE the hustle and bustle and head to this impeccably cared for Lake Hubert cottage located on one of the area’s most sought after lakes...This is truly a fabulous property featuring 100’ of premier shoreline offering easy elevation to an excellent sand lake bottom with spectacular sunsets, crystal clear waters offering the “Best of the Best” of skiing, boating and fishing in the Nisswa Area! This “cozy & quaint” 2-bedroom, 1 bath home offers an open concept design, a bright and cheerful kitchen, knotty pine tongue and groove cathedral ceilings, a rustic brick woodburning fireplace, a delightful living room that showcases breathtaking views through a wall of lakeside windows along with a beautifully recently renovated bath. Relax on the grand lakeside deck and enjoy the sounds of nature and a gorgeous mix of towering Pines and hardwoods...All your living facilities are conveniently on one level! This property is also complimented with a large detached 2-car garage with plenty of room to add on to the home down the road if you need more space. This PRIME LOCATION is NESTLED in the heart of the Lakes Area with easy access to the Paul Bunyan bike trail, championship golf, fun shopping along with great dining and entertainment.

Additional Details:

Year Built	1976
Lot Acres	0.52
Lot Dimensions	100 x 224 x 100 x 228
Garage Stalls	2
School District	181
Taxes	\$3,732
Taxes with Assessments	\$3,732
Tax Year	2025

Additional Features:

Fuel: Electric **Heat:** Baseboard, Ductless Mini-Split

Driving Directions:

FROM NISSWA AT THE JCT. OF 371 & 77, GO SOUTH ON 371 FOR 2.1 MILES TO, LEFT ON NASHWAY RD. FOR 1.4 MILES TO, LEFT ON E. LAKE HUBERT DR. FOR 0.8 MILES TO SIGN & FIRE# 22481 ON LEFT.



Listed By:
Kurilla Real Estate LTD

Affinity Real Estate Inc. participates in the Regional Multiple Listing Service of Minnesota, Inc Broker Reciprocity (sm) program, allowing us to display other broker’s listings on our website. All properties are subject to prior sale, change or withdrawal.



Call Affinity Real Estate

218-237-3333

info@affinityrealestate.com



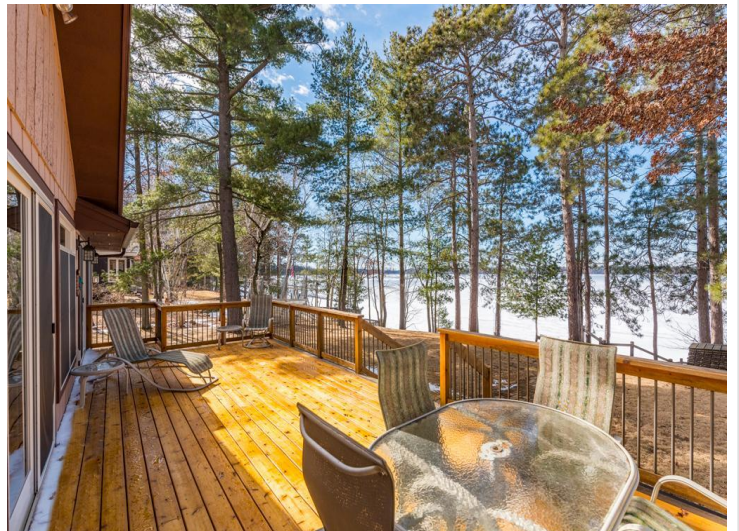
Affinity Real Estate - 600 Park Avenue South - Park Rapids MN 56470



website: www.AffinityRealEstate.com | email: info@affinityrealestate.com | office: 218-237-3333 | fax:218-237-3377

Affinity
REAL ESTATE INC

\$849,900
MLS 6688652 Lake Home
22481 Lake Hubert Drive
Nisswa MN 56468



website: www.AffinityRealEstate.com | email: info@affinityrealestate.com | office: 218-237-3333 | fax: 218-237-3377

Affinity
REAL ESTATE INC

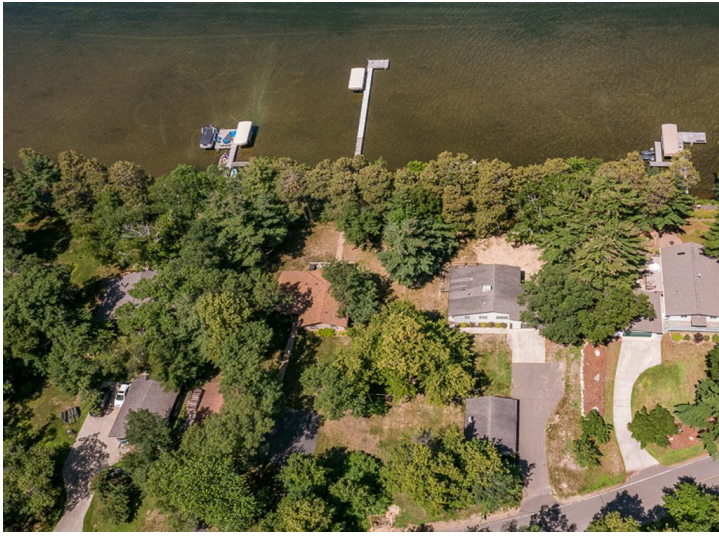
\$849,900
MLS 6688652 Lake Home
22481 Lake Hubert Drive
Nisswa MN 56468



website: www.AffinityRealEstate.com | email: info@affinityrealestate.com | office: 218-237-3333 | fax:218-237-3377

Affinity
REAL ESTATE INC

\$849,900
MLS 6688652 Lake Home
22481 Lake Hubert Drive
Nisswa MN 56468



website: www.AffinityRealEstate.com | email: info@affinityrealestate.com | office: 218-237-3333 | fax:218-237-3377

Affinity
REAL ESTATE INC

\$849,900
MLS 6688652 Lake Home
22481 Lake Hubert Drive
Nisswa MN 56468



website: www.AffinityRealEstate.com | email: info@affinityrealestate.com | office: 218-237-3333 | fax:218-237-3377



\$849,900

MLS 6688652 Lake Home
22481 Lake Hubert Drive
Nisswa MN 56468



website: www.AffinityRealEstate.com | email: info@affinityrealestate.com | office: 218-237-3333 | fax:218-237-3377



\$849,900

MLS 6688652 Lake Home
22481 Lake Hubert Drive
Nisswa MN 56468