

MLS 6688670 Lake Land

\$185,000

Description:

For Sale! 15.5 Acres on Big Sand with 166' of shoreline. Come build your dream place with acres around you! This pristine lake is known for its sandy lake bottom, has a surface area of 1,635 acres and maximum depth of 135 feet. County Road 40 lays between the land and water. This property has a variety of cleared areas, woods and lowlands. Utilities are available; however, none are connected. The stairs to the water are the neighbors. The property shares the approach off County 40 with neighbor. (18494)

Additional Details:

Lot Acres	15.55
Lot Dimensions	varied
School District	309
Taxes	\$676
Taxes with Assessments	\$676
Tax Year	2024

Additional Features:

Driving Directions:

From Park Rapids, Head East on Highway 34. Take a left on County Road 4. Go North to County Road 40. Take a right on County Road 40. Property is on left.



Listed By:
National Realty Guild

Affinity Real Estate Inc. participates in the Regional Multiple Listing Service of Minnesota, Inc Broker Reciprocity (sm) program, allowing us to display other broker's listings on our website. All properties are subject to prior sale, change or withdrawal.



Call Affinity Real Estate

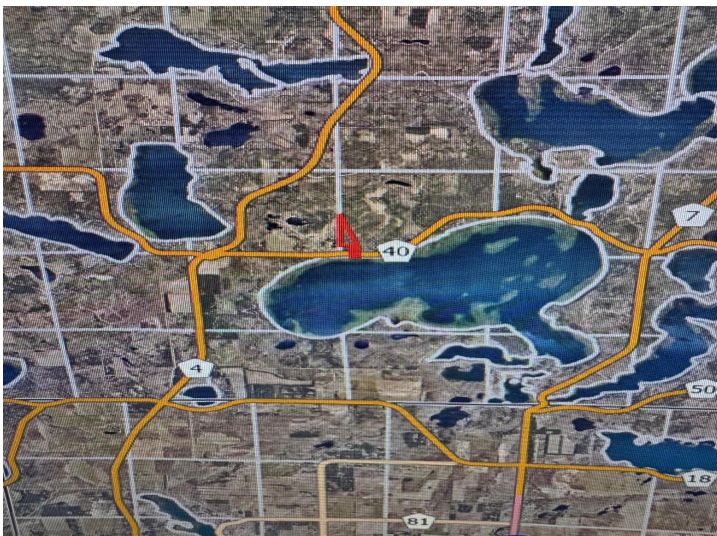
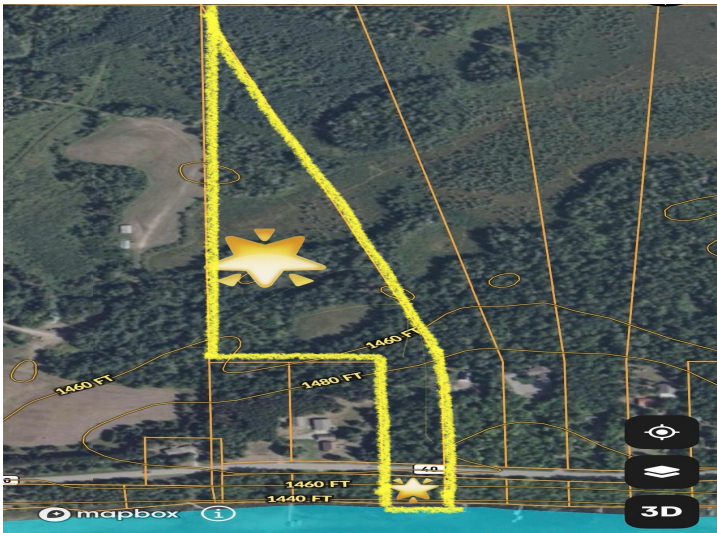
218-237-3333

info@affinityrealestate.com

MLS



Affinity Real Estate - 600 Park Avenue South - Park Rapids MN 56470



website: www.AffinityRealEstate.com | email: info@affinityrealestate.com | office: 218-237-3333 | fax: 218-237-3377



\$185,000
 MLS 6688670 Lake Land
 xxx County Road 40
 Park Rapids MN 56470



website: www.AffinityRealEstate.com | email: info@affinityrealestate.com | office: 218-237-3333 | fax: 218-237-3377



\$185,000
MLS 6688670 Lake Land
xxx County Road 40
Park Rapids MN 56470



website: www.AffinityRealEstate.com | email: info@affinityrealestate.com | office: 218-237-3333 | fax: 218-237-3377



\$185,000
 MLS 6688670 Lake Land
 xxx County Road 40
 Park Rapids MN 56470



website: www.AffinityRealEstate.com | email: info@affinityrealestate.com | office: 218-237-3333 | fax: 218-237-3377



\$185,000

MLS 6688670 Lake Land
xxx County Road 40
Park Rapids MN 56470



website: www.AffinityRealEstate.com | email: info@affinityrealestate.com | office: 218-237-3333 | fax: 218-237-3377



\$185,000

MLS 6688670 Lake Land
xxx County Road 40
Park Rapids MN 56470



website: www.AffinityRealEstate.com | email: info@affinityrealestate.com | office: 218-237-3333 | fax: 218-237-3377



\$185,000
 MLS 6688670 Lake Land
 xxx County Road 40
 Park Rapids MN 56470



website: www.AffinityRealEstate.com | email: info@affinityrealestate.com | office: 218-237-3333 | fax: 218-237-3377



\$185,000

MLS 6688670 Lake Land
xxx County Road 40
Park Rapids MN 56470



website: www.AffinityRealEstate.com | email: info@affinityrealestate.com | office: 218-237-3333 | fax: 218-237-3377



\$185,000
MLS 6688670 Lake Land
xxx County Road 40
Park Rapids MN 56470



website: www.AffinityRealEstate.com | email: info@affinityrealestate.com | office: 218-237-3333 | fax:218-237-3377



\$185,000

MLS 6688670 Lake Land
xxx County Road 40
Park Rapids MN 56470