



MLS 6689144 Residential

**\$114,900**

1,600 sq ft  
3 bedrooms  
2 baths

27702 Ogema Court  
Browerville MN 56438

Status: Coming Soon

**Description:**

Don't miss this three bedroom home in Sylvan Shores Association. This property is ready for the finishing touches and features a new electric fireplace, ample living space, a new septic system, and the master suite is ready to live in while the rest is finished! This incredible opportunity awaits! Schedule Your Showing Today!

**Additional Details:**

Year Built	2023
Lot Acres	0.46
Lot Dimensions	90x250
School District	2170
Taxes	\$556
Taxes with Assessments	\$556
Tax Year	2024

**Additional Features:**

**Basement:** Crawl Space **Fuel:** Other **Heat:** None **Sewer:** Septic System Compliant - Yes, Tank with Drainage Field **Water:** Drilled, Well **Air Conditioning:** None

**Driving Directions:**

From 400th St go south on Onamia Trl to right on Oak Dr to left on Ogema Ct. Follow to property.



Listed By:  
eXp Realty

Affinity Real Estate Inc. participates in the Regional Multiple Listing Service of Minnesota, Inc Broker Reciprocity (sm) program, allowing us to display other broker's listings on our website. All properties are subject to prior sale, change or withdrawal.



Call Affinity Real Estate

**218-237-3333**

[info@affinityrealestate.com](mailto:info@affinityrealestate.com)



Affinity Real Estate - 600 Park Avenue South - Park Rapids MN 56470



website: [www.AffinityRealEstate.com](http://www.AffinityRealEstate.com) | email: [info@affinityrealestate.com](mailto:info@affinityrealestate.com) | office: 218-237-3333 | fax:218-237-3377

**Affinity**  
REAL ESTATE INC

**\$114,900**  
MLS 6689144 Residential  
27702 Ogema Court  
Browerville MN 56438



website: [www.AffinityRealEstate.com](http://www.AffinityRealEstate.com) | email: [info@affinityrealestate.com](mailto:info@affinityrealestate.com) | office: 218-237-3333 | fax:218-237-3377

**Affinity**  
REAL ESTATE INC

**\$114,900**  
MLS 6689144 Residential  
27702 Ogema Court  
Browerville MN 56438



website: [www.AffinityRealEstate.com](http://www.AffinityRealEstate.com) | email: [info@affinityrealestate.com](mailto:info@affinityrealestate.com) | office: 218-237-3333 | fax:218-237-3377



**\$114,900**  
MLS 6689144 Residential  
27702 Ogema Court  
Browerville MN 56438



website: [www.AffinityRealEstate.com](http://www.AffinityRealEstate.com) | email: [info@affinityrealestate.com](mailto:info@affinityrealestate.com) | office: 218-237-3333 | fax:218-237-3377

**Affinity**  
REAL ESTATE INC

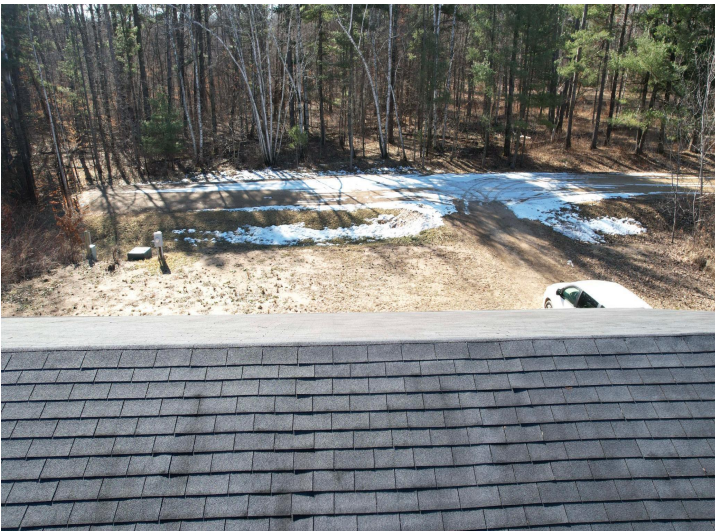
**\$114,900**  
MLS 6689144 Residential  
27702 Ogema Court  
Browerville MN 56438



website: [www.AffinityRealEstate.com](http://www.AffinityRealEstate.com) | email: [info@affinityrealestate.com](mailto:info@affinityrealestate.com) | office: 218-237-3333 | fax:218-237-3377



**\$114,900**  
MLS 6689144 Residential  
27702 Ogema Court  
Browerville MN 56438



website: [www.AffinityRealEstate.com](http://www.AffinityRealEstate.com) | email: [info@affinityrealestate.com](mailto:info@affinityrealestate.com) | office: 218-237-3333 | fax:218-237-3377

**Affinity**  
REAL ESTATE INC

**\$114,900**  
MLS 6689144 Residential  
27702 Ogema Court  
Browerville MN 56438



website: [www.AffinityRealEstate.com](http://www.AffinityRealEstate.com) | email: [info@affinityrealestate.com](mailto:info@affinityrealestate.com) | office: 218-237-3333 | fax:218-237-3377



**\$114,900**  
MLS 6689144 Residential  
27702 Ogema Court  
Browerville MN 56438