



MLS 6689205 Residential

\$329,900

956 sq ft
2 bedrooms
2 baths

7336 Navaho Trail
Pequot Lakes MN 56472

Status: Pending

Description:

"Welcome to your new home! Built in 2022, this stunning one-level, two-bedroom, two-bathroom home sits on a spacious 1+ acre wooded lot. The home boasts many features, including a cozy gas fireplace, stainless steel appliances, gas stove, granite countertops in kitchen and bathrooms, large pantry, tile shower, stained concrete floors, on demand water heater, heated floors, open floor plan and heated/insulated garage. The modern barn-style/french doors add a stylish charm and the in-floor heat throughout the home and garage ensures comfort year-round. Step outside to a beautiful stamped concrete patio or enjoy the large fenced-in yard, perfect for outdoor activities, pets or kids. Lots of landscaping done through out property plus a nice long black top drive with easy turn around. Garage is finished and could easily be converted to extra living space. Come take a look at this super cute home!!

Additional Details:

Year Built	2022
Lot Acres	1.32
Lot Dimensions	144x405
Garage Stalls	2
School District	186
Taxes	\$1,596
Taxes with Assessments	\$1,596
Tax Year	2024

Additional Features:

Basement: None **Fuel:** Natural Gas **Garage:** 2 **Heat:** Fireplace(s), Radiant Floor **Sewer:** Septic System Compliant - Yes, Tank with Drainage Field
Water: Drilled, Well **Air Conditioning:** Ductless Mini-Split

Driving Directions:

From Breezy Point gates N on Cty Rd 11 to left on Ranchette Dr to right on Navaho to home on right.



Listed By:
Dane Arthur Real Estate Agency-Crosslake

Affinity Real Estate Inc. participates in the Regional Multiple Listing Service of Minnesota, Inc Broker Reciprocity (sm) program, allowing us to display other broker's listings on our website. All properties are subject to prior sale, change or withdrawal.



Call Affinity Real Estate

218-237-3333

info@affinityrealestate.com



Affinity Real Estate - 600 Park Avenue South - Park Rapids MN 56470



website: www.AffinityRealEstate.com | email: info@affinityrealestate.com | office: 218-237-3333 | fax: 218-237-3377

Affinity
REAL ESTATE INC

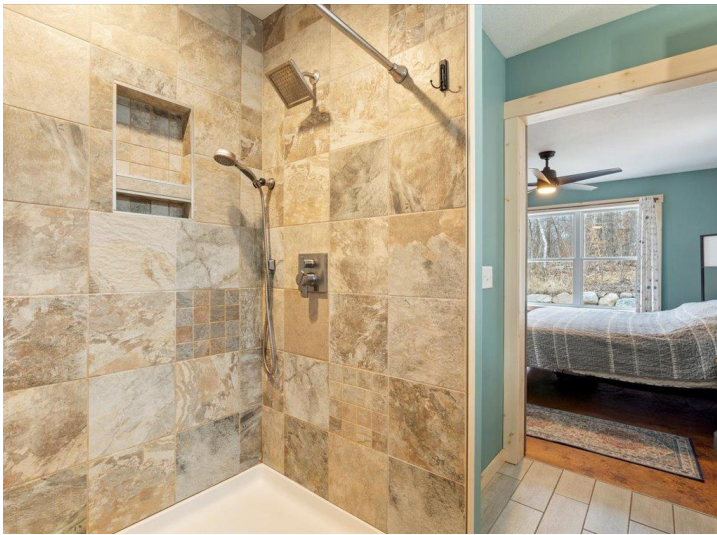
\$329,900
MLS 6689205 Residential
7336 Navaho Trail
Pequot Lakes MN 56472



website: www.AffinityRealEstate.com | email: info@affinityrealestate.com | office: 218-237-3333 | fax: 218-237-3377

Affinity
REAL ESTATE INC

\$329,900
MLS 6689205 Residential
7336 Navaho Trail
Pequot Lakes MN 56472



website: www.AffinityRealEstate.com | email: info@affinityrealestate.com | office: 218-237-3333 | fax: 218-237-3377

Affinity
REAL ESTATE INC

\$329,900
MLS 6689205 Residential
7336 Navaho Trail
Pequot Lakes MN 56472



website: www.AffinityRealEstate.com | email: info@affinityrealestate.com | office: 218-237-3333 | fax: 218-237-3377



\$329,900
 MLS 6689205 Residential
 7336 Navaho Trail
 Pequot Lakes MN 56472



website: www.AffinityRealEstate.com | email: info@affinityrealestate.com | office: 218-237-3333 | fax: 218-237-3377



\$329,900
 MLS 6689205 Residential
 7336 Navaho Trail
 Pequot Lakes MN 56472



website: www.AffinityRealEstate.com | email: info@affinityrealestate.com | office: 218-237-3333 | fax: 218-237-3377



\$329,900
 MLS 6689205 Residential
 7336 Navaho Trail
 Pequot Lakes MN 56472



website: www.AffinityRealEstate.com | email: info@affinityrealestate.com | office: 218-237-3333 | fax:218-237-3377



\$329,900
MLS 6689205 Residential
7336 Navaho Trail
Pequot Lakes MN 56472

website: www.AffinityRealEstate.com | email: info@affinityrealestate.com | office: 218-237-3333 | fax:218-237-3377



\$329,900

MLS 6689205 Residential
7336 Navaho Trail
Pequot Lakes MN 56472