

MLS 6689397 Lake Land

\$34,000

Description:

Wooded large lot in the Walker area. Launch your boat on beautiful Leech Lake. Use the nearby State public land with hundreds of acres.

Additional Details:

Lot Acres	1.2
Lot Dimensions	150x345x150x364
School District	113
Taxes	\$146
Taxes with Assessments	\$146
Tax Year	2025

Additional Features:

Driving Directions:

From Walker, 8 1/2 miles North of Walker on MN 200/Hwy 371. Turn Right onto Steamboat Loop NW for 1/2 mile. Turn Left onto Cove Dr NW for 1/2 mile. Turn Left onto Grouse Loop NW. Property is on the right, (just past neighbor (#11330))



Listed By:
Bill Hansen Realty/Hackensack

Affinity Real Estate Inc. participates in the Regional Multiple Listing Service of Minnesota, Inc Broker Reciprocity (sm) program, allowing us to display other broker's listings on our website. All properties are subject to prior sale, change or withdrawal.



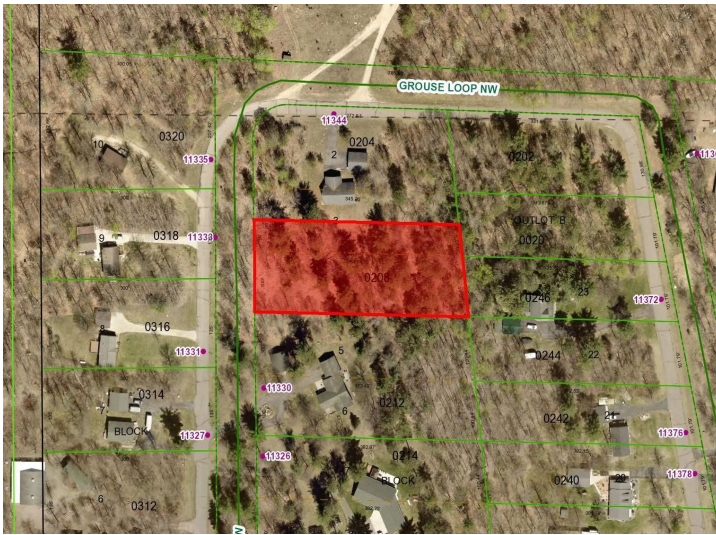
Call Affinity Real Estate

218-237-3333

info@affinityrealestate.com



Affinity Real Estate - 600 Park Avenue South - Park Rapids MN 56470



website: www.AffinityRealEstate.com | email: info@affinityrealestate.com | office: 218-237-3333 | fax: 218-237-3377



\$34,000
MLS 6689397 Lake Land
XXX Grouse Loop
Walker MN 56484