

MLS 6689620 Residential

**\$399,900**

1,709 sq ft  
3 bedrooms  
2 baths

16096 Serene Pines Court  
Brainerd MN 56401

Status: Active

#### Description:

To-be-built Sundown Plan in the beautiful Serene Pines Development. This home will be built on a beautiful cul-de-sac lot backing up to the Paul Bunyan Trail! This three level split offers a unique floor plan with 3 bedrooms, 2 full baths with and a 3-car garage. The private primary bedroom is on the upper level with an ensuite and huge walk-in closet. Stainless Steel kitchen appliance package, paneled doors, vaulted ceilings, seeded yard and irrigation system included. Options to finish lower level.

#### Additional Details:

Year Built	2025
Lot Acres	0.5
Lot Dimensions	114x173x132x200
Garage Stalls	3
School District	181
Taxes	(unreported)
Taxes with Assessments	(unreported)
Tax Year	2025

#### Additional Features:

**Basement:** Drain Tiled, Unfinished **Fuel:** Natural Gas **Garage:** 3 **Heat:** Forced Air **Sewer:** City Sewer/Connected **Water:** City Water/Connected  
**Air Conditioning:** Central Air

#### Driving Directions:

From Beaver Dam Rd go to the roundabout, take the first left exit onto CR-49 to Sugarberry Creek, go right on Serene Pines Ct to home on left.



Listed By:  
Basswood Real Estate LLC

Affinity Real Estate Inc. participates in the Regional Multiple Listing Service of Minnesota, Inc Broker Reciprocity (sm) program, allowing us to display other broker's listings on our website. All properties are subject to prior sale, change or withdrawal.



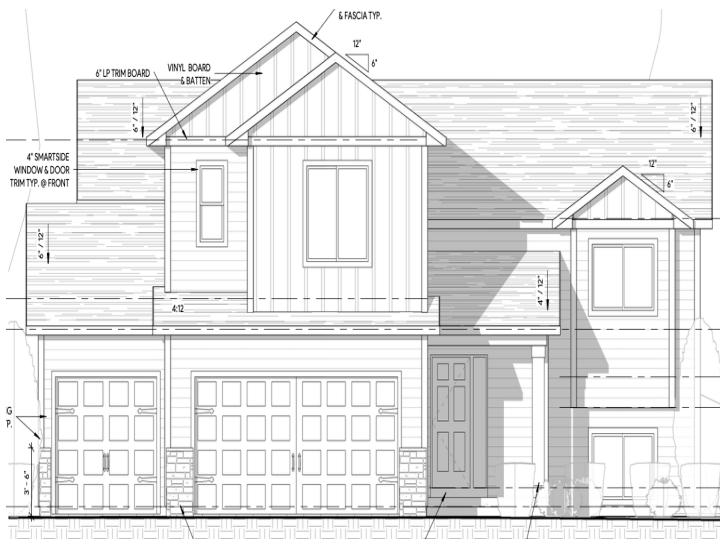
Call Affinity Real Estate

**218-237-3333**

[info@affinityrealestate.com](mailto:info@affinityrealestate.com)



Affinity Real Estate - 600 Park Avenue South - Park Rapids MN 56470



website: [www.AffinityRealEstate.com](http://www.AffinityRealEstate.com) | email: [info@affinityrealestate.com](mailto:info@affinityrealestate.com) | office: 218-237-3333 | fax: 218-237-3377



**\$399,900**

MLS 6689620 Residential  
16096 Serene Pines Court  
Brainerd MN 56401