



MLS 6690314 Land

**\$474,900**

80.4 Acres  
Raw Land

TBD 290th Street  
Park Rapids MN 56470

Status: Active

**Description:**

Featuring 80 acres with 840' of lakeshore on beautiful Bad Axe. This one-of-a-kind acreage has had long term ownership since the 1970's and has never been logged. Bordering hundreds of acres of county land gives you the utmost privacy along with a great habitat for deer, bear, grouse and lots of waterfowl. Create endless memories enjoying the recreational trails, hunting, boating and fishing. This would also make a great investment property or a place to build your dream home.

**Additional Details:**

Lot Acres	80.4
Lot Dimensions	Irregular
School District	1384
Taxes	\$2,134
Taxes with Assessments	\$2,134
Tax Year	2025

**Additional Features:**

**Driving Directions:**

From Hwy 34/71 in Park Rapids go east on 34 to Cty 4 and turn left. Follow to just past Emmaville to 290th street and turn right and follow it till it ends. Property #'s 19432 and 19434 is not part of this acreage but the 80 acres and lakeshore are all around those 2 homes.



Listed By:  
Affinity Real Estate Inc.

Affinity Real Estate Inc. participates in the Regional Multiple Listing Service of Minnesota, Inc Broker Reciprocity (sm) program, allowing us to display other broker's listings on our website. All properties are subject to prior sale, change or withdrawal.



**Call Affinity Real Estate**

**218-237-3333**

**info@affinityrealestate.com**



**Affinity Real Estate - 600 Park Avenue South - Park Rapids MN 56470**





website: [www.AffinityRealEstate.com](http://www.AffinityRealEstate.com) | email: [info@affinityrealestate.com](mailto:info@affinityrealestate.com) | office: 218-237-3333 | fax: 218-237-3377



**\$474,900**  
MLS 6690314 Land  
TBD 290th Street  
Park Rapids MN 56470



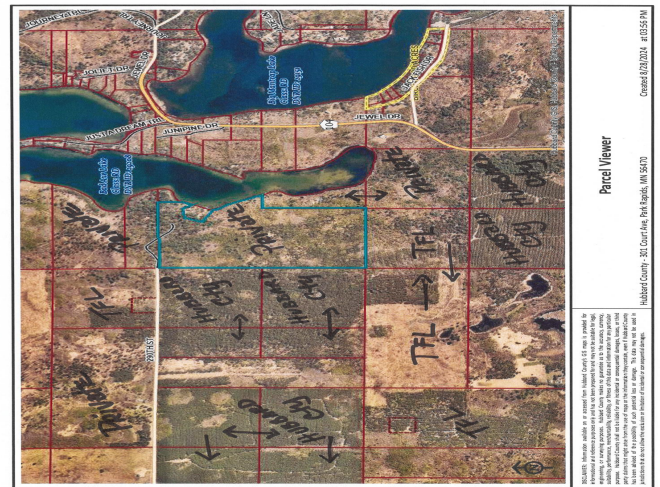


website: [www.AffinityRealEstate.com](http://www.AffinityRealEstate.com) | email: [info@affinityrealestate.com](mailto:info@affinityrealestate.com) | office: 218-237-3333 | fax: 218-237-3377



**\$474,900**  
 MLS 6690314 Land  
 TBD 290th Street  
 Park Rapids MN 56470





website: [www.AffinityRealEstate.com](http://www.AffinityRealEstate.com) | email: [info@affinityrealestate.com](mailto:info@affinityrealestate.com) | office: 218-237-3333 | fax: 218-237-3377



**\$474,900**  
MLS 6690314 Land  
TBD 290th Street  
Park Rapids MN 56470