



MLS 6690433 Commercial

**\$249,900**

631 Jefferson Street  
Wadena MN 56482

Status: Active

**Description:**

Excellent high visibility spot to expand or start a new business. Upstairs has showroom, office an 1/2 bath with full kitchen. Lower level has 2 rooms that can be office or bedrooms(both have egress windows), full bath, large relaxation area. Former Owner lived on-site in the apartment on lower level.  
Owner is a licensed real estate agent.

**Additional Details:**

Year Built	1967
Lot Acres	0.33
Lot Dimensions	63.91x279x59.2x303.74
Garage Stalls	2
School District	2155
Taxes	\$2,694
Taxes with Assessments	\$2,694
Tax Year	2024

**Additional Features:**

**Basement:** Egress Window(s), Finished, Full **Fuel:** Natural Gas **Garage:** 2 **Heat:** Forced Air **Sewer:** City Sewer/Connected **Water:** City Water/Connected **Air Conditioning:** Central Air

**Driving Directions:**

From Hwy 10 and 71 North o Hwy 71 to sign on west side of road.



Listed By:  
Premier Realty Group

Affinity Real Estate Inc. participates in the Regional Multiple Listing Service of Minnesota, Inc Broker Reciprocity (sm) program, allowing us to display other broker's listings on our website. All properties are subject to prior sale, change or withdrawal.



**Call Affinity Real Estate**

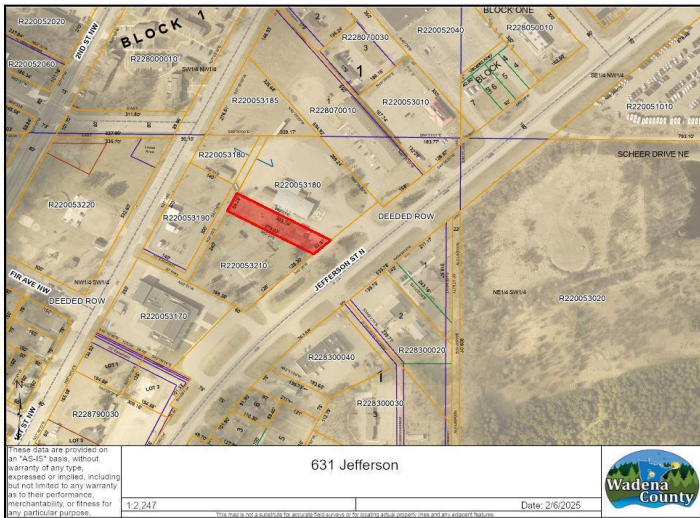
**218-237-3333**

**info@affinityrealestate.com**



**Affinity Real Estate - 600 Park Avenue South - Park Rapids MN 56470**





website: [www.AffinityRealEstate.com](http://www.AffinityRealEstate.com) | email: [info@affinityrealestate.com](mailto:info@affinityrealestate.com) | office: 218-237-3333 | fax: 218-237-3377



**\$249,900**  
 MLS 6690433 Commercial  
 631 Jefferson Street  
 Wadena MN 56482





website: [www.AffinityRealEstate.com](http://www.AffinityRealEstate.com) | email: [info@affinityrealestate.com](mailto:info@affinityrealestate.com) | office: 218-237-3333 | fax: 218-237-3377

**Affinity**  
REAL ESTATE INC

**\$249,900**  
MLS 6690433 Commercial  
631 Jefferson Street  
Wadena MN 56482





website: [www.AffinityRealEstate.com](http://www.AffinityRealEstate.com) | email: [info@affinityrealestate.com](mailto:info@affinityrealestate.com) | office: 218-237-3333 | fax: 218-237-3377



**\$249,900**  
MLS 6690433 Commercial  
631 Jefferson Street  
Wadena MN 56482