



MLS 6690721 Residential

**\$309,900**

1,950 sq ft  
3 bedrooms  
2 baths

3523 Green Gables Road  
Brainerd MN 56401

Status: Pending

**Description:**

Welcome to this beautiful rambler home located just outside of Baxter. This rambler is a 3-bedroom, 2-bathroom home offering 1,950 sq. ft of living space. Featuring a spacious and inviting layout, this home boasts a bright living area, a well-appointed kitchen, and generously sized basement. The primary suite provides a peaceful retreat, while the additional bedrooms offer flexibility for family, guests, or a home office. Enjoy the convenience of a 2-stall garage, perfect for vehicles, storage, or hobbies. Outside, the large yard offers endless possibilities for relaxation and entertaining. Conveniently located near local amenities, lakes, and recreational trails, this home is perfect for those who love the outdoors while still being close to town. Don't miss out on this fantastic opportunity—schedule your showing today!

**Additional Details:**

Year Built	1974
Lot Acres	0.6
Lot Dimensions	120x217
Garage Stalls	2
School District	181
Taxes	\$25
Taxes with Assessments	\$25
Tax Year	2024

**Additional Features:**

**Basement:** Full, Partially Finished **Fuel:** Natural Gas **Garage:** 2 **Heat:** Forced Air **Sewer:** Private Sewer, Tank with Drainage Field **Water:** Drilled, Well **Air Conditioning:** Central Air

**Driving Directions:**

From Brainerd take HWY 371 North to Green Gable Rd, turn left to home on Left



Listed By:  
Coldwell Banker Realty

Affinity Real Estate Inc. participates in the Regional Multiple Listing Service of Minnesota, Inc Broker Reciprocity (sm) program, allowing us to display other broker's listings on our website. All properties are subject to prior sale, change or withdrawal.



Call Affinity Real Estate

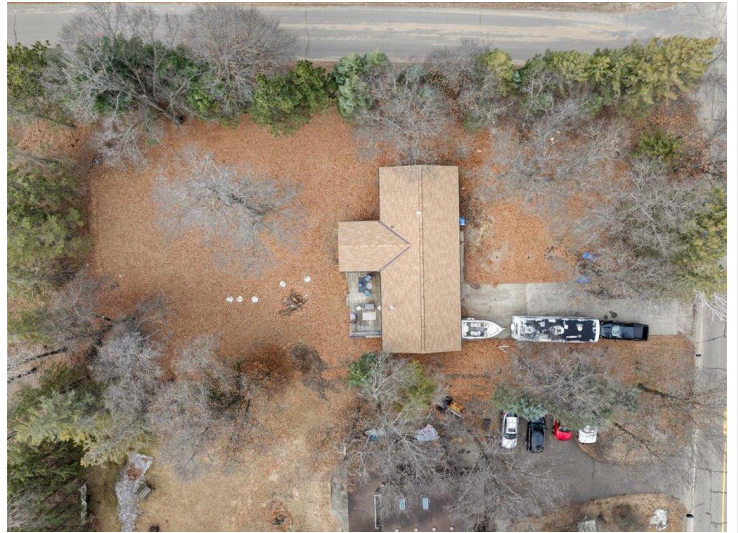
**218-237-3333**

[info@affinityrealestate.com](mailto:info@affinityrealestate.com)



Affinity Real Estate - 600 Park Avenue South - Park Rapids MN 56470





website: [www.AffinityRealEstate.com](http://www.AffinityRealEstate.com) | email: [info@affinityrealestate.com](mailto:info@affinityrealestate.com) | office: 218-237-3333 | fax: 218-237-3377

**Affinity**  
REAL ESTATE INC

**\$309,900**  
MLS 6690721 Residential  
3523 Green Gables Road  
Brainerd MN 56401





website: [www.AffinityRealEstate.com](http://www.AffinityRealEstate.com) | email: [info@affinityrealestate.com](mailto:info@affinityrealestate.com) | office: 218-237-3333 | fax: 218-237-3377

**Affinity**  
REAL ESTATE INC

**\$309,900**  
MLS 6690721 Residential  
3523 Green Gables Road  
Brainerd MN 56401





website: [www.AffinityRealEstate.com](http://www.AffinityRealEstate.com) | email: [info@affinityrealestate.com](mailto:info@affinityrealestate.com) | office: 218-237-3333 | fax: 218-237-3377

**Affinity**  
REAL ESTATE INC

**\$309,900**  
MLS 6690721 Residential  
3523 Green Gables Road  
Brainerd MN 56401



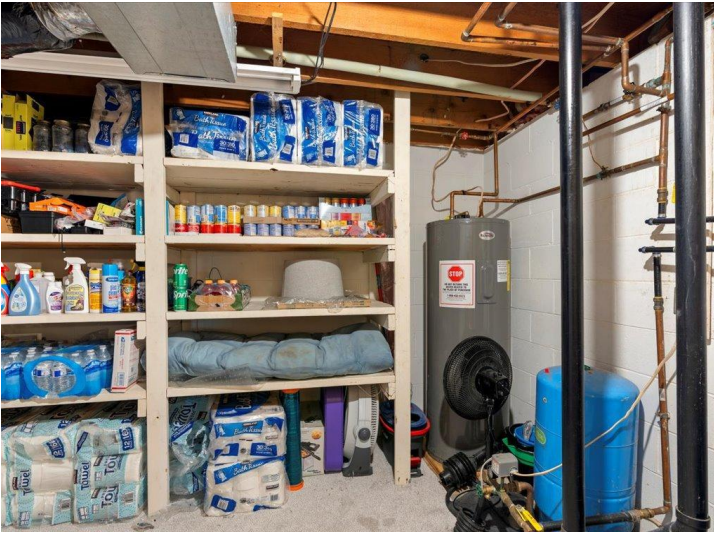


website: [www.AffinityRealEstate.com](http://www.AffinityRealEstate.com) | email: [info@affinityrealestate.com](mailto:info@affinityrealestate.com) | office: 218-237-3333 | fax: 218-237-3377



**\$309,900**  
MLS 6690721 Residential  
3523 Green Gables Road  
Brainerd MN 56401





website: [www.AffinityRealEstate.com](http://www.AffinityRealEstate.com) | email: [info@affinityrealestate.com](mailto:info@affinityrealestate.com) | office: 218-237-3333 | fax: 218-237-3377



**\$309,900**  
 MLS 6690721 Residential  
 3523 Green Gables Road  
 Brainerd MN 56401





website: [www.AffinityRealEstate.com](http://www.AffinityRealEstate.com) | email: [info@affinityrealestate.com](mailto:info@affinityrealestate.com) | office: 218-237-3333 | fax: 218-237-3377



**\$309,900**  
 MLS 6690721 Residential  
 3523 Green Gables Road  
 Brainerd MN 56401