



MLS 6690735 Residential

\$149,000

1,304 sq ft
4 bedrooms
2 baths

2726 Irvine Avenue
Bemidji MN 56601

Status: Active

Description:

This 1,304 Sq Ft property is a 4 bed/2 bath home in Bemidji, MN 56601. Property is located in a quiet neighborhood, shopping and restaurants.

Additional Details:

| | |
|------------------------|---------|
| Year Built | 1961 |
| Lot Acres | 0.91 |
| Lot Dimensions | 150x265 |
| Garage Stalls | 2 |
| School District | 31 |
| Taxes | \$2,868 |
| Taxes with Assessments | \$2,668 |
| Tax Year | 2024 |

Additional Features:

Basement: None **Fuel:** Propane **Garage:** 2 **Heat:** Forced Air **Sewer:** City Sewer/Connected **Water:** City Water/Connected **Air Conditioning:** None

Driving Directions:

From J W Smith Elementary School 1712 America Ave NW, Head N, Turn L, Turn R



Listed By:
Jeff Hagel

Affinity Real Estate Inc. participates in the Regional Multiple Listing Service of Minnesota, Inc Broker Reciprocity (sm) program, allowing us to display other broker's listings on our website. All properties are subject to prior sale, change or withdrawal.



Call Affinity Real Estate

218-237-3333

info@affinityrealestate.com



Affinity Real Estate - 600 Park Avenue South - Park Rapids MN 56470



website: www.AffinityRealEstate.com | email: info@affinityrealestate.com | office: 218-237-3333 | fax: 218-237-3377

Affinity
REAL ESTATE INC

\$149,000
MLS 6690735 Residential
2726 Irvine Avenue
Bemidji MN 56601



website: www.AffinityRealEstate.com | email: info@affinityrealestate.com | office: 218-237-3333 | fax: 218-237-3377

Affinity
REAL ESTATE INC

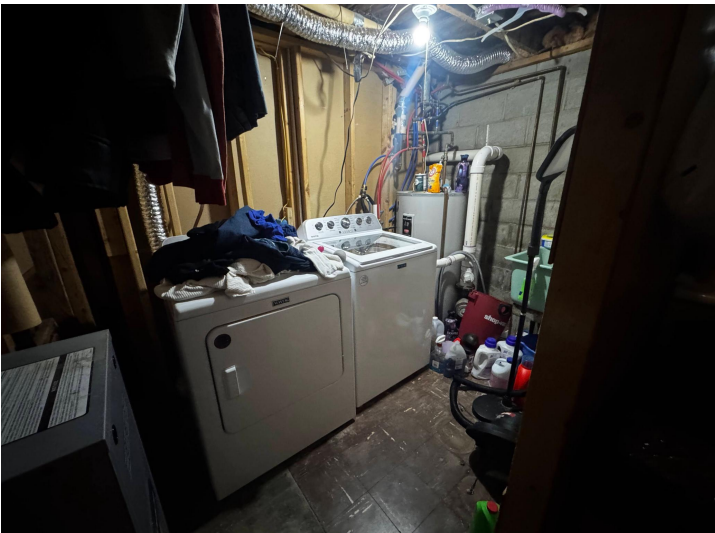
\$149,000
MLS 6690735 Residential
2726 Irvine Avenue
Bemidji MN 56601



website: www.AffinityRealEstate.com | email: info@affinityrealestate.com | office: 218-237-3333 | fax: 218-237-3377

Affinity
REAL ESTATE INC

\$149,000
MLS 6690735 Residential
2726 Irvine Avenue
Bemidji MN 56601



website: www.AffinityRealEstate.com | email: info@affinityrealestate.com | office: 218-237-3333 | fax: 218-237-3377

Affinity
REAL ESTATE INC

\$149,000
MLS 6690735 Residential
2726 Irvine Avenue
Bemidji MN 56601