

MLS 6690817 Lake Home

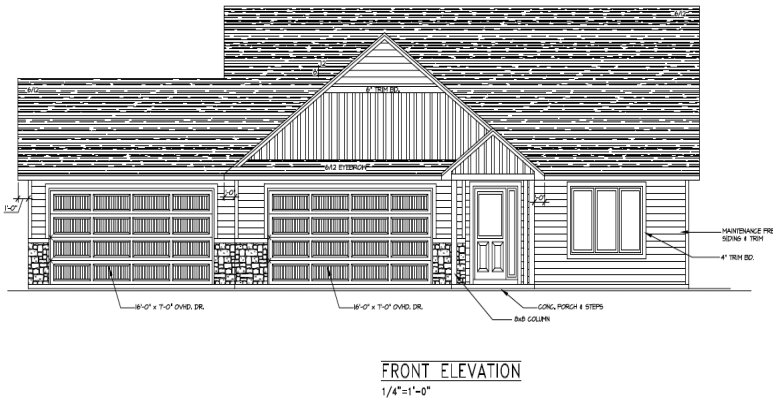
\$692,225

2,208 sq ft
3 bedrooms
2 baths

5862 Red Leaf Court
Nisswa MN 56468

Waterfront: Clark

Status: Pending



Description:

Under construction is this customized "Serenity" model, a harmonious blend of comfort and elegance all on one level. This exquisite home features 3 Bedrooms, 2 Bathrooms available features include: A cozy fireplace and a convenient 4-stall garage and a range of selections. Other plans range from split-level, one-level, and 2-story plans, all meticulously designed to suit your lifestyle. At Thomas Allen Homes, we believe in customization. Select your finishes, colors, and options to curate a home that mirrors your unique style. From the flooring to the fixtures, make it truly yours. A Seamless Experience: Building your dream home should be thrilling, not stressful. We take pride in ensuring your journey is exciting and seamless. Take your pick from a variety of choice lots in prime locations. Secure your spot now and embark on this incredible journey with Thomas Allen Homes. We have only 8 lots remaining in this community!!!!

Additional Details:

| | |
|------------------------|-------|
| Year Built | 2025 |
| Lot Acres | 0.25 |
| Lot Dimensions | irr |
| Garage Stalls | 4 |
| School District | 181 |
| Taxes | \$270 |
| Taxes with Assessments | \$270 |
| Tax Year | 2024 |

Additional Features:

Fuel: Natural Gas **Heat:** Forced Air

Driving Directions:

FROM Brainerd, North on 371 to Cty Rd 18 (lights south end of Downtown), turn right, straight through round-about 2 blocks to Community on right. FROM Nisswa, take Lakers Ln in front of Elementary east 2 blocks.



Listed By:
Edina Realty, Inc.

Affinity Real Estate Inc. participates in the Regional Multiple Listing Service of Minnesota, Inc Broker Reciprocity (sm) program, allowing us to display other broker's listings on our website. All properties are subject to prior sale, change or withdrawal.



Call Affinity Real Estate

218-237-3333

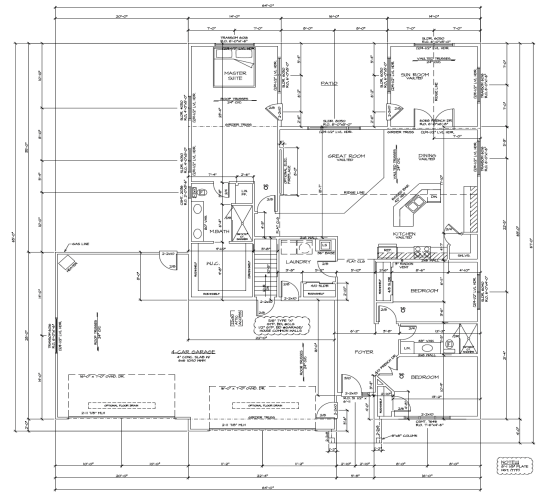
info@affinityrealestate.com



Affinity Real Estate - 600 Park Avenue South - Park Rapids MN 56470



FRONT ELEVATION
1/4"=1'-0"



FIRST FLOOR PLAN
1/4"=1'-0"



website: www.AffinityRealEstate.com | email: info@affinityrealestate.com | office: 218-237-3333 | fax: 218-237-3377



\$692,225
 MLS 6690817 Lake Home
 5862 Red Leaf Court
 Nisswa MN 56468



website: www.AffinityRealEstate.com | email: info@affinityrealestate.com | office: 218-237-3333 | fax: 218-237-3377



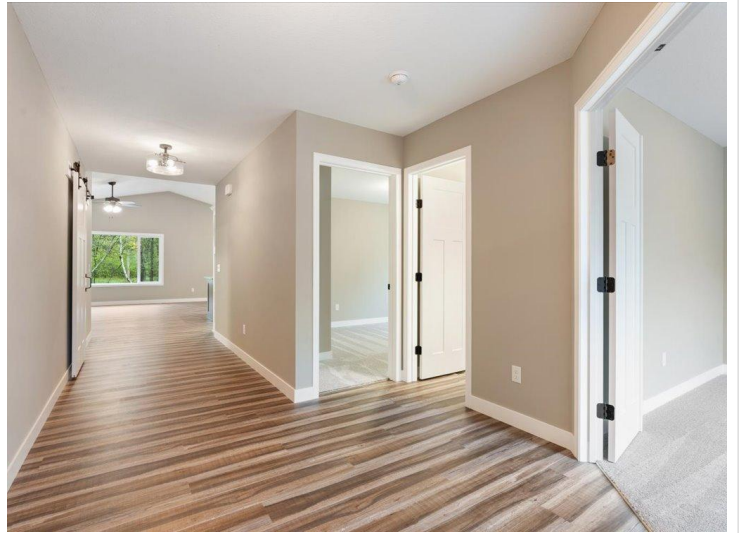
\$692,225
MLS 6690817 Lake Home
5862 Red Leaf Court
Nisswa MN 56468



website: www.AffinityRealEstate.com | email: info@affinityrealestate.com | office: 218-237-3333 | fax: 218-237-3377



\$692,225
MLS 6690817 Lake Home
5862 Red Leaf Court
Nisswa MN 56468



website: www.AffinityRealEstate.com | email: info@affinityrealestate.com | office: 218-237-3333 | fax:218-237-3377



\$692,225
MLS 6690817 Lake Home
5862 Red Leaf Court
Nisswa MN 56468



website: www.AffinityRealEstate.com | email: info@affinityrealestate.com | office: 218-237-3333 | fax:218-237-3377



\$692,225
MLS 6690817 Lake Home
5862 Red Leaf Court
Nisswa MN 56468



website: www.AffinityRealEstate.com | email: info@affinityrealestate.com | office: 218-237-3333 | fax:218-237-3377

Affinity
REAL ESTATE INC

\$692,225
MLS 6690817 Lake Home
5862 Red Leaf Court
Nisswa MN 56468