

MLS 6690881 Land

\$59,500

10 Acres
Subdivided

TBD Country Way
Brainerd MN 56401

Status: Pending

Description:

Roughly 10 acres just south of Brainerd offering a nice mix of wooded, high and low ground located in a great neighborhood on a blacktop road! Get your building plans ready!

Additional Details:

Lot Acres	10
Lot Dimensions	305x967x521x1299
School District	181
Taxes	\$538
Taxes with Assessments	\$538
Tax Year	2025

Additional Features:

Driving Directions:

South on Hwy 25 approximately 11 miles, right on Country Way to property on left.



Listed By:
Positive Realty

Affinity Real Estate Inc. participates in the Regional Multiple Listing Service of Minnesota, Inc Broker Reciprocity (sm) program, allowing us to display other broker's listings on our website. All properties are subject to prior sale, change or withdrawal.



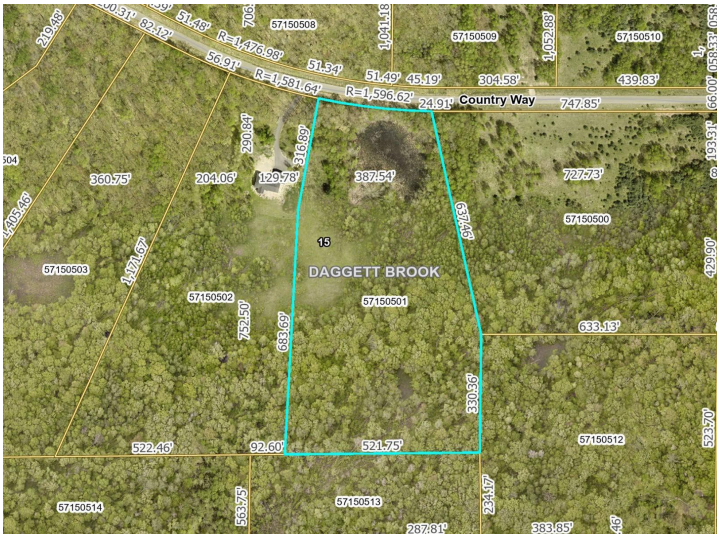
Call Affinity Real Estate

218-237-3333

info@affinityrealestate.com



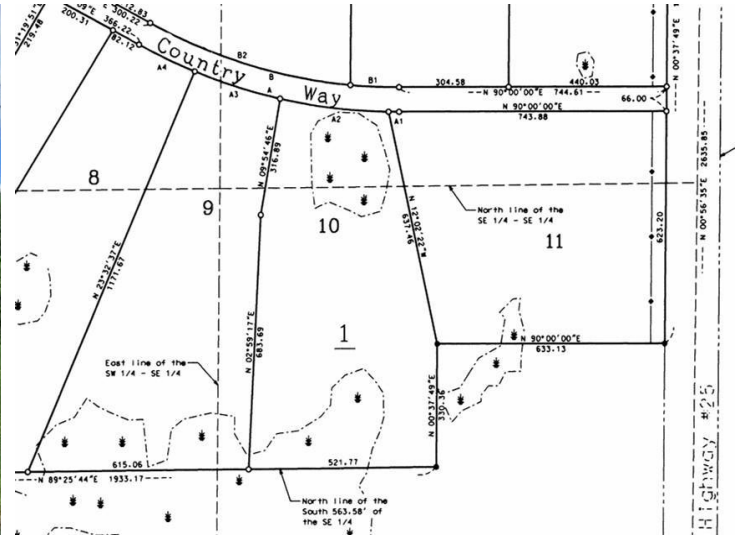
Affinity Real Estate - 600 Park Avenue South - Park Rapids MN 56470



website: www.AffinityRealEstate.com | email: info@affinityrealestate.com | office: 218-237-3333 | fax: 218-237-3377



\$59,500
 MLS 6690881 Land
 TBD Country Way
 Brainerd MN 56401



Page 3 of 3