



MLS 6690967 Lake Home

**\$569,900**

2,636 sq ft  
4 bedrooms  
4 baths

5544 White Pine Drive  
Pequot Lakes MN 56472

Waterfront: Middle Cullen

Status: Active

**Description:**

This stunning 4-bedroom, 4-bathroom twin home in the Wilderness Resort Association, just outside Nisswa, MN, offers the perfect blend of luxury and nature. Enjoy spacious living with tasteful finishes, fully updated kitchen, and bathrooms. The home provides direct access to Middle Cullen Lake, perfect for boating, fishing, or relaxing by the water. On-site amenities include a pool, hot tub, and a gym, ensuring year-round relaxation and fitness. Whether you're looking for a peaceful retreat or an adventure-filled getaway, this home is ideally located near Nisswa's dining, shopping, and outdoor activities. Experience lakefront living at its best!

**Additional Details:**

Year Built	2014
Lot Acres	0.04
Lot Dimensions	50x50
Garage Stalls	2
School District	186
Taxes	\$4,183
Taxes with Assessments	\$4,208
Tax Year	2025

**Additional Features:**

**Basement:** Daylight/Lookout Windows, Finished, Tile Shower, Walkout **Fuel:** Natural Gas **Garage:** 2 **Heat:** Forced Air **Sewer:** Private Sewer, Shared Septic **Water:** Shared System, Well **Air Conditioning:** Central Air

**Driving Directions:**

Highway 371 North from Nisswa, to east on #107, curve right onto Wilderness Road, follow to a left onto White Pine Unit 10 will be on your left.



Listed By:  
RE/MAX Advantage Plus

Affinity Real Estate Inc. participates in the Regional Multiple Listing Service of Minnesota, Inc Broker Reciprocity (sm) program, allowing us to display other broker's listings on our website. All properties are subject to prior sale, change or withdrawal.



**Call Affinity Real Estate**

**218-237-3333**

**info@affinityrealestate.com**



**Affinity Real Estate - 600 Park Avenue South - Park Rapids MN 56470**



website: [www.AffinityRealEstate.com](http://www.AffinityRealEstate.com) | email: [info@affinityrealestate.com](mailto:info@affinityrealestate.com) | office: 218-237-3333 | fax:218-237-3377



**\$569,900**  
MLS 6690967 Lake Home  
5544 White Pine Drive  
Pequot Lakes MN 56472



website: [www.AffinityRealEstate.com](http://www.AffinityRealEstate.com) | email: [info@affinityrealestate.com](mailto:info@affinityrealestate.com) | office: 218-237-3333 | fax:218-237-3377

**Affinity**  
REAL ESTATE INC

**\$569,900**  
MLS 6690967 Lake Home  
5544 White Pine Drive  
Pequot Lakes MN 56472



website: [www.AffinityRealEstate.com](http://www.AffinityRealEstate.com) | email: [info@affinityrealestate.com](mailto:info@affinityrealestate.com) | office: 218-237-3333 | fax:218-237-3377

**Affinity**  
REAL ESTATE INC

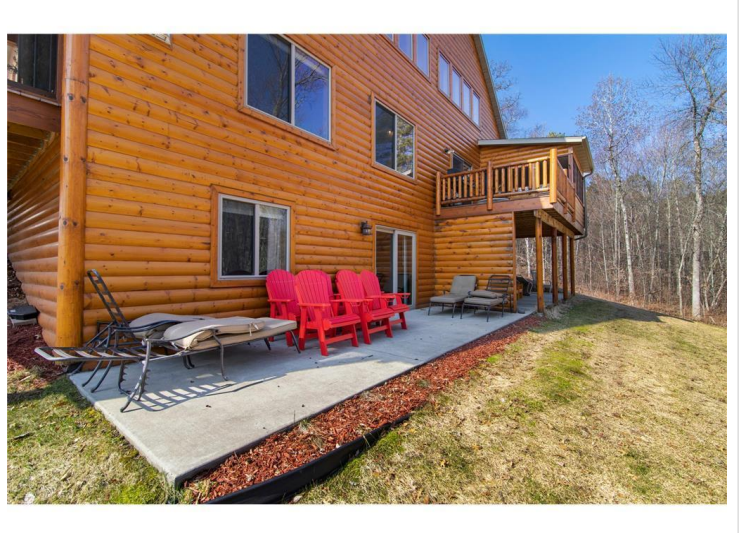
**\$569,900**  
MLS 6690967 Lake Home  
5544 White Pine Drive  
Pequot Lakes MN 56472



website: [www.AffinityRealEstate.com](http://www.AffinityRealEstate.com) | email: [info@affinityrealestate.com](mailto:info@affinityrealestate.com) | office: 218-237-3333 | fax:218-237-3377

**Affinity**  
REAL ESTATE INC

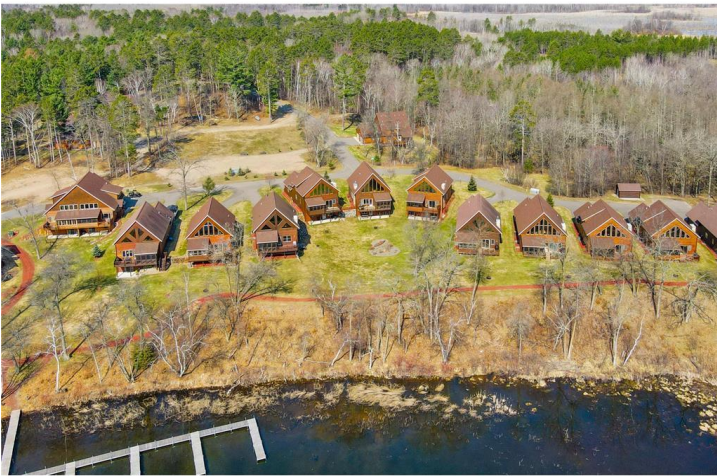
**\$569,900**  
MLS 6690967 Lake Home  
5544 White Pine Drive  
Pequot Lakes MN 56472



website: [www.AffinityRealEstate.com](http://www.AffinityRealEstate.com) | email: [info@affinityrealestate.com](mailto:info@affinityrealestate.com) | office: 218-237-3333 | fax: 218-237-3377

**Affinity**  
REAL ESTATE INC

**\$569,900**  
MLS 6690967 Lake Home  
5544 White Pine Drive  
Pequot Lakes MN 56472



website: [www.AffinityRealEstate.com](http://www.AffinityRealEstate.com) | email: [info@affinityrealestate.com](mailto:info@affinityrealestate.com) | office: 218-237-3333 | fax:218-237-3377



**\$569,900**  
MLS 6690967 Lake Home  
5544 White Pine Drive  
Pequot Lakes MN 56472



website: [www.AffinityRealEstate.com](http://www.AffinityRealEstate.com) | email: [info@affinityrealestate.com](mailto:info@affinityrealestate.com) | office: 218-237-3333 | fax:218-237-3377



**\$569,900**  
MLS 6690967 Lake Home  
5544 White Pine Drive  
Pequot Lakes MN 56472